

MAJOR.

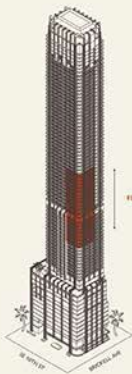
888 Brickell Avenue

MIAMI FLORIDA

Residence A

FLOOR 34-54

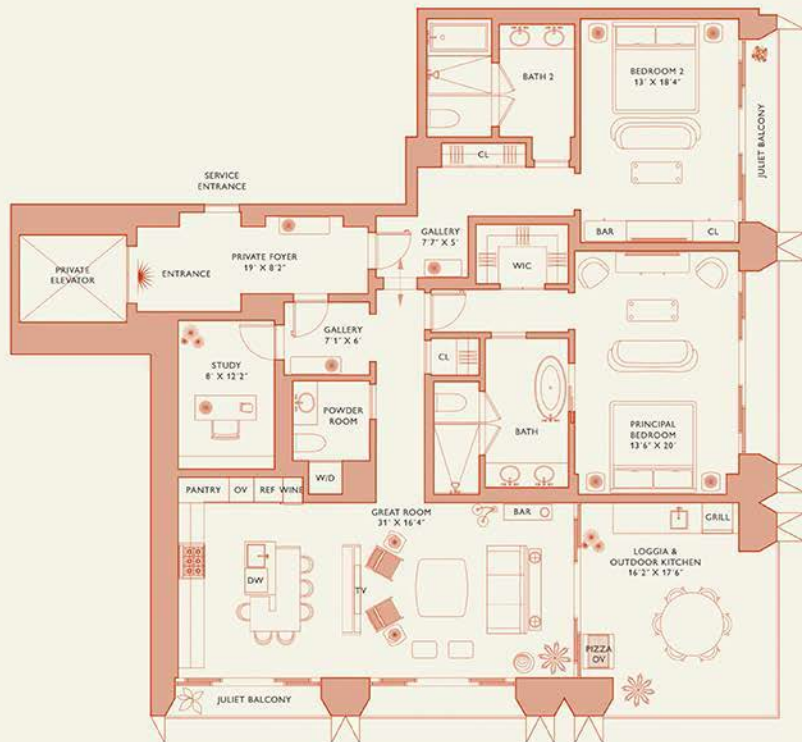
Rooms	Square Footages	Features
2 Bedrooms	Indoor: 2,315 SQF	Major Suite & Major Room
2 Bathrooms	Outdoor: 405 SQF	Furniture by Studio Sofield
Powder Room	Total: 2,720 SQF	11' Ceiling Height
Study		4 Juliet Balconies
		Loggia & Outdoor Kitchen
		Views: South East



FLOORS 34 - 54



Standard dimensions are measured to the exterior boundaries of the exterior walls and the centerline of exterior opening walls and are not true from the dimensions that would be determined by using the description and definition of the "false" set forth in the Declaration. (false) generally only includes the interior openings between the exterior walls and includes interior structural components. For your reference, the area of the false, determined in accordance with these defined and boundaries, is set forth on Exhibit "F" to the Declaration of Condominium. Note the measurements of rooms set forth on this floor plan are generally taken at the ground plane of each floor room with a parallel rectangle, without regard for any curvatures. Accordingly, the area of the actual room will typically be smaller than the product obtained by multiplying the stated length times width. All dimensions are approximate and may vary with actual construction, and all floor plans and development plans are subject to change.



Biscayne Bay

Major Residence



MAJOR.

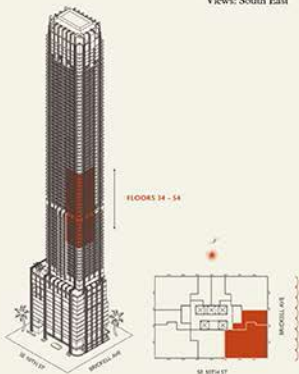
888 Brickell Avenue

MIAMI FLORIDA

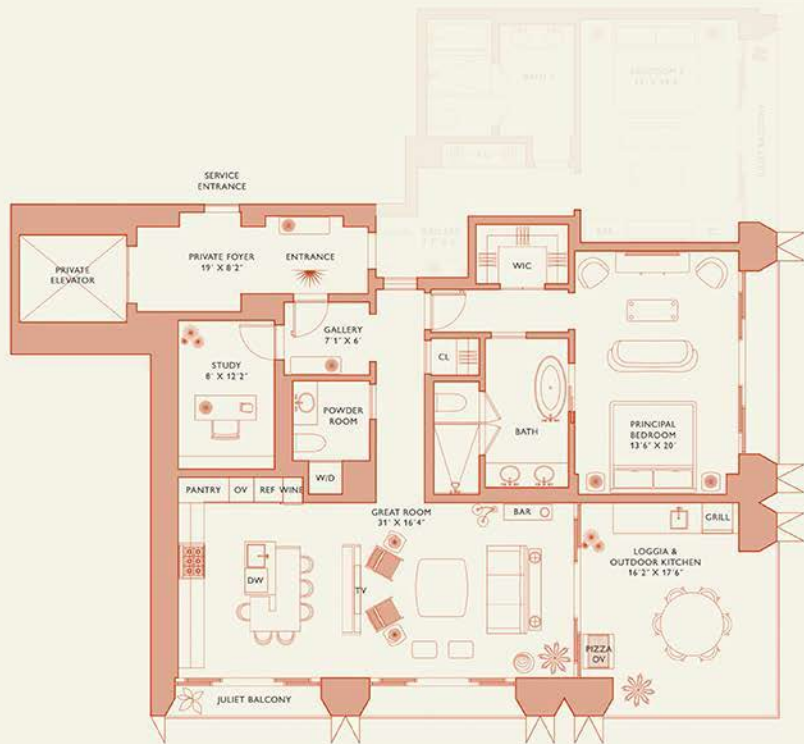
Residence A

FLOOR 34-54

Rooms	Square Footages	Features
2 Bedrooms	Indoor: 2,315 SQF	Major Suite & Major Room
2 Bathrooms	Outdoor: 405 SQF	Furniture by Studio Sofield
Powder Room	Total: 2,720 SQF	11' Ceiling Height
Study		4 Juliet Balconies
		Loggia & Outdoor Kitchen
		Views: South East



Small dimensions are measured to the exterior boundaries of the exterior walls and the centerline of exterior opening walls and in feet, vary from the dimensions that would be determined by using the description and definition of the "Net" set forth in the Declaration, which generally only includes the interior surface between the exterior walls and includes interior structural components. For your reference, the area of this floor, furnished as a courtesy, is not shown with these internal and boundary walls, which form the "Net" in the Declaration of Condominium. Note the measurements of rooms set forth on this floor plan are generally taken at the ground plane of each floor (not shown) as a simple rectangle, without regard for any columns. Accordingly, the area of the actual room will typically be smaller than the product obtained by multiplying the stated length times width. All dimensions are approximate and may vary with actual construction, and all floor plans and development plans are subject to change.



Biscayne Bay

Major Suite



MAJOR.

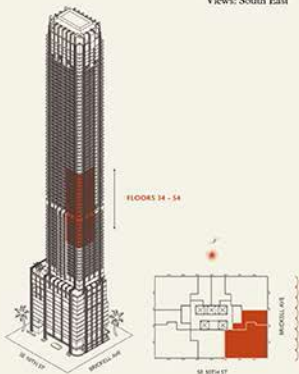
888 Brickell Avenue

MIAMI FLORIDA

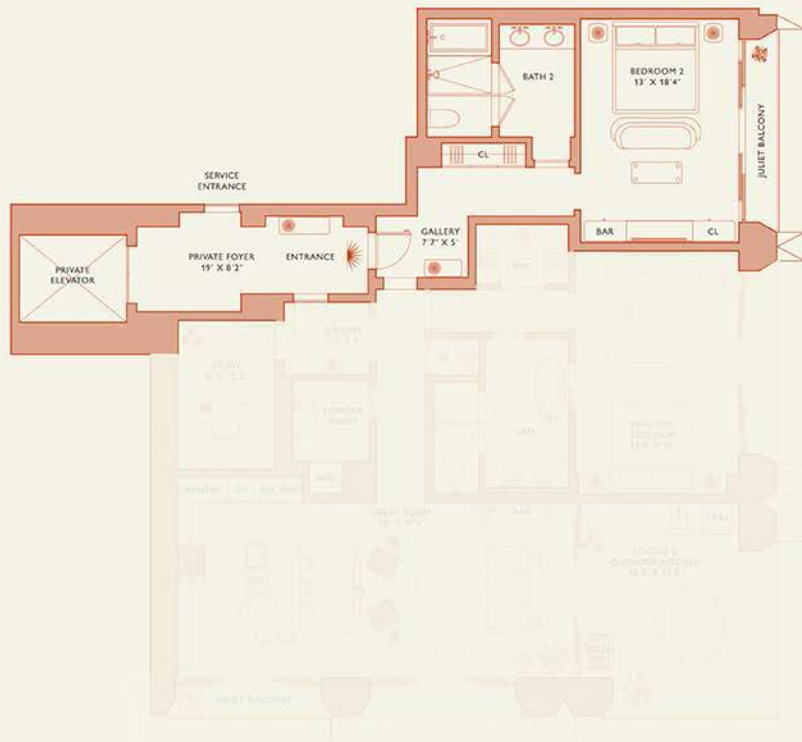
Residence A

FLOOR 34-54

Rooms	Square Footages	Features
2 Bedrooms	Indoor: 2,315 SQF	Major Suite & Major Room
2 Bathrooms	Outdoor: 405 SQF	Furniture by Studio Sofield
Powder Room	Total: 2,720 SQF	11' Ceiling Height
Study		4 Juliet Balconies
		Loggia & Outdoor Kitchen
		Views: South East



Some dimensions are measured to the exterior boundaries of the exterior walls and the centerline of exterior finishing walls and in fact vary from the dimensions that would be determined by using the description and definition of the "Gross" set forth in the Declaration, which generally only includes the interior surface between the perimeter walls and includes interior structural components. For your reference, the area of this plan, furnished in accordance with these standard and boundaries, is set forth on Exhibit "J" to the Declaration of Condominium. Note the measurements of rooms set forth on this floor plan are generally taken at the greatest points of each floor room with a parallel rectangle, without regard for any columns. Accordingly, the area of the actual room will typically be smaller than the product obtained by multiplying the stated length times width. All dimensions are approximate and may vary with actual construction, and all floor plans and development plans are subject to change.



Biscayne Bay

Major Room



MAJOR.

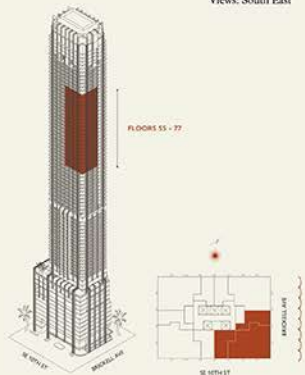
888 Brickell Avenue

MIAMI, FLORIDA

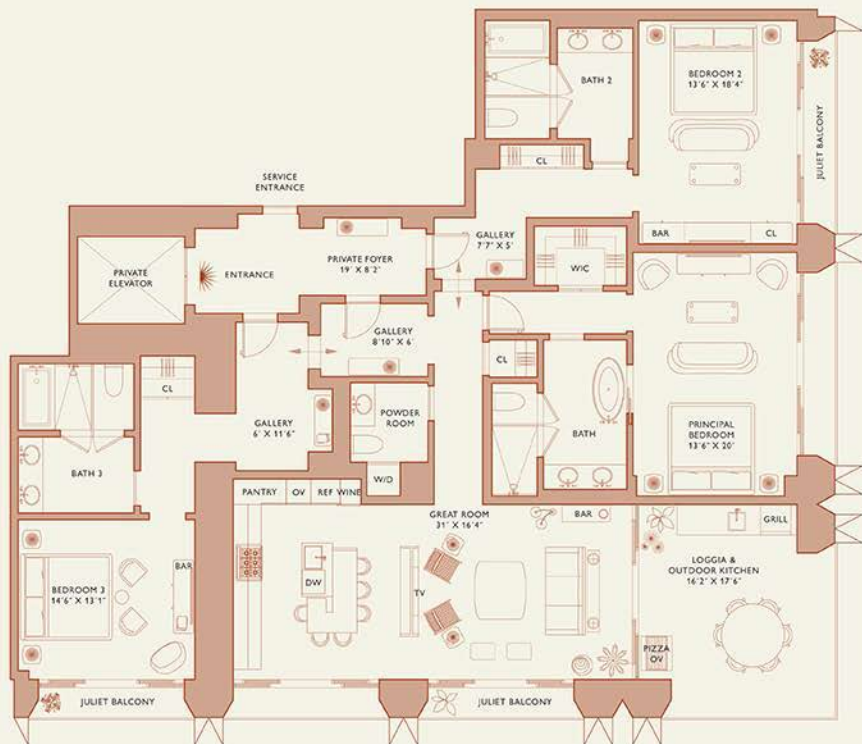
Residence A

FLOOR 55-77

Rooms	Square Footage	Features
3 Bedrooms	Indoor: 2,875 SQF	Major Suite & Major Rooms
3 Bathrooms	Outdoor: 435 SQF	Furniture by Studio Softel
Powder Room	Total: 3,310 SQF	11' Ceiling Height
		5 Juliet Balconies
		Loggia & Outdoor Kitchen
		Views: South East



Sized dimensions are measured to the exterior boundaries of the exterior walls and the centerline of exterior opening walls and in feet, not from the dimensions that would be determined by using the description and definition of the "Net" set forth in the Declaration. Net area generally only includes the exterior surface between the perimeter walls and includes interior structural components. For your reference, the area of the Unit, determined in accordance with those defined area boundaries, is set forth in Table 7 in the Declaration of Condominium. Note that measurements of rooms set forth on this floor plan are generally taken at the greatest points of each given room (as the owner may prefer) without regard for any columns. Accordingly, the area of the actual room will typically be smaller than the product obtained by multiplying the stated length times width. All dimensions are approximate and may vary with actual construction, and all floor plans and development plans are subject to change.



Brickell Bay

Major Residence



MAJOR.

888 Brickell Avenue

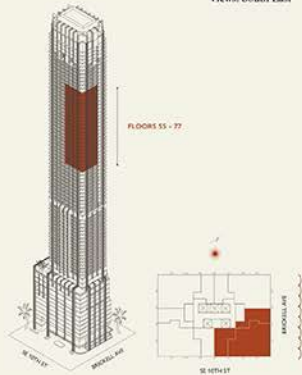
MIAMI, FLORIDA



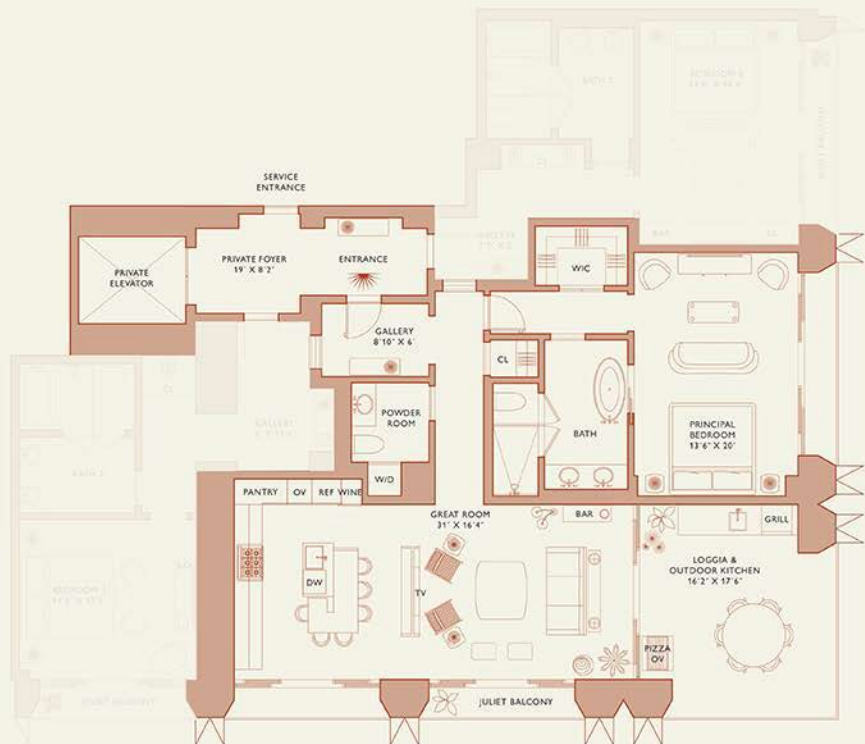
Residence A

FLOOR 55-77

Rooms	Square Footage	Features
3 Bedrooms	Indoor: 2,875 SQF	Major Suite & Major Rooms
3 Bathrooms	Outdoor: 435 SQF	Furniture by Studio Sofield
Powder Room	Total: 3,310 SQF	11' Ceiling Height
		5 Juliet Balconies
		Loggia & Outdoor Kitchen
		Views: South East



Sized dimensions are measured to the exterior boundaries of the exterior walls and the centerline of exterior opening walls and in feet, not in inches. The dimensions that would be determined by using the description and definition of the "Net" set forth in the Declaration (which generally only includes the exterior surface) between the perimeter walls and includes interior structural components. For your reference, the area of the Unit, determined in accordance with those defined area boundaries, is set forth in Table 7 in the Declaration of Condominium. Note that measurements of rooms set forth on the floor plans are generally taken at the greatest points of each given room (as if the corner were a perfect rectangle), without regard for any columns. Accordingly, the area of the actual room will typically be smaller than the product obtained by multiplying the stated length times width. All dimensions are approximate and may vary with actual construction, and all floor plans and development plans are subject to change.



Brickell Bay

Major Suite



MAJOR.

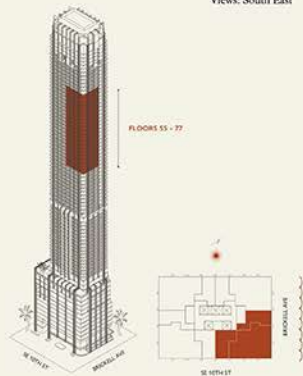
888 Brickell Avenue

MIAMI FLORIDA

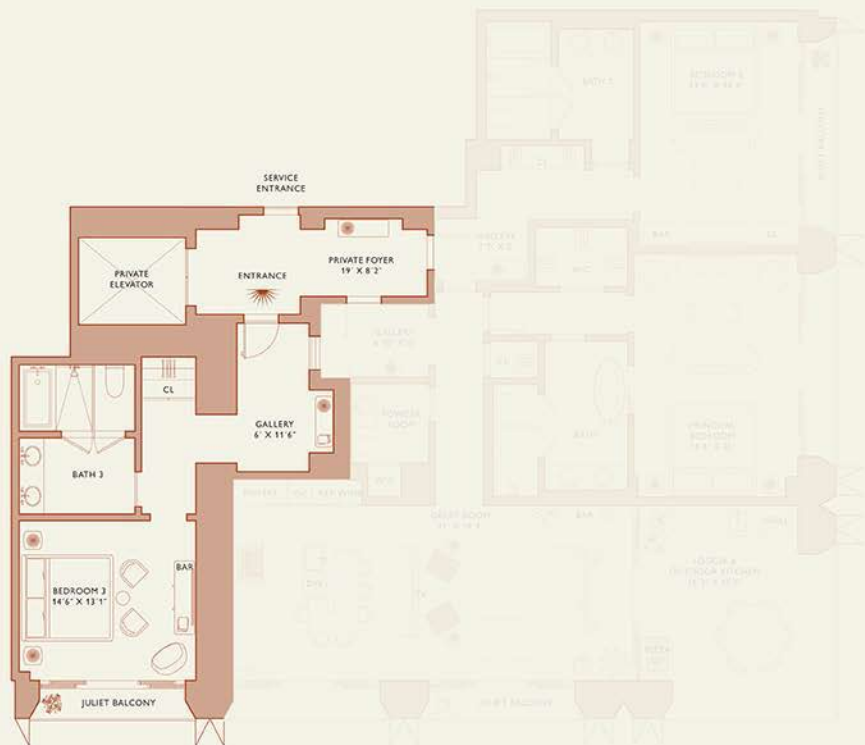
Residence A

FLOOR 55-77

Rooms	Square Footage	Features
3 Bedrooms	Indoor: 2,875 SQF	Major Suite & Major Rooms
3 Bathrooms	Outdoor: 435 SQF	Furniture by Studio Shifted
Powder Room	Total: 3,310 SQF	11' Ceiling Height
		5 Juliet Balconies
		Loggia & Outdoor Kitchen
		Views: South East



Sized dimensions are measured to the exterior boundaries of the exterior walls and the centerline of exterior opening walls and in feet, not yards. The dimensions that would be determined by using the description and definition of the "Net" set forth in the Declaration (which generally only includes the exterior surface between the perimeter walls and includes interior structural components). For your reference, the area of the Unit, determined in accordance with those defined area boundaries, is set forth on Exhibit "F" to the Declaration of Condominium. Note that measurements of rooms set forth on this floor plan are generally taken at the greatest points of each given room (as if the room were a perfect rectangle), without regard for any columns. Accordingly, the area of the actual room will typically be smaller than the product obtained by multiplying the stated length times width. All dimensions are approximate and may vary with actual construction, and all floor plans and development plans are subject to change.



Brickell Bay

Major Room 1



MAJOR.

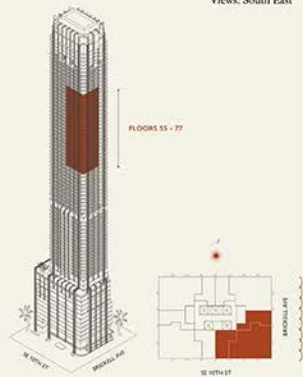
888 Brickell Avenue

MIAMI, FLORIDA

Residence A

FLOOR 55-77

Rooms	Square Footage	Features
3 Bedrooms	Indoor: 2,875 SQF	Major Suite & Major Rooms
3 Bathrooms	Outdoor: 435 SQF	Furniture by Studio Sofield
Powder Room	Total: 3,310 SQF	11' Ceiling Height
		5 Juliet Balconies
		Loggia & Outdoor Kitchen
		Views: South East



Sized dimensions are measured to the exterior boundaries of the exterior walls and the centerline of exterior opening walls and in feet, not from the dimensions that would be determined by using the description and definition of the "Net" set forth in the Declaration. Labels generally only include the exterior surface between the perimeter walls and includes exterior structural components. For your reference, the area of the Unit, determined in accordance with those defined area boundaries, is set forth on Table 7 in the Declaration of Condominium. Note that measurements of rooms set forth on the floor plan are generally taken at the greatest points of each given room (as if the room were a perfect rectangle), without regard for any columns. Accordingly, the area of the actual room will typically be smaller than the product obtained by multiplying the stated length times width. All dimensions are approximate and may vary with actual construction, and all floor plans and development plans are subject to change.



Brickell Bay

Major Room 2



MAJOR.

888 Brickell Avenue

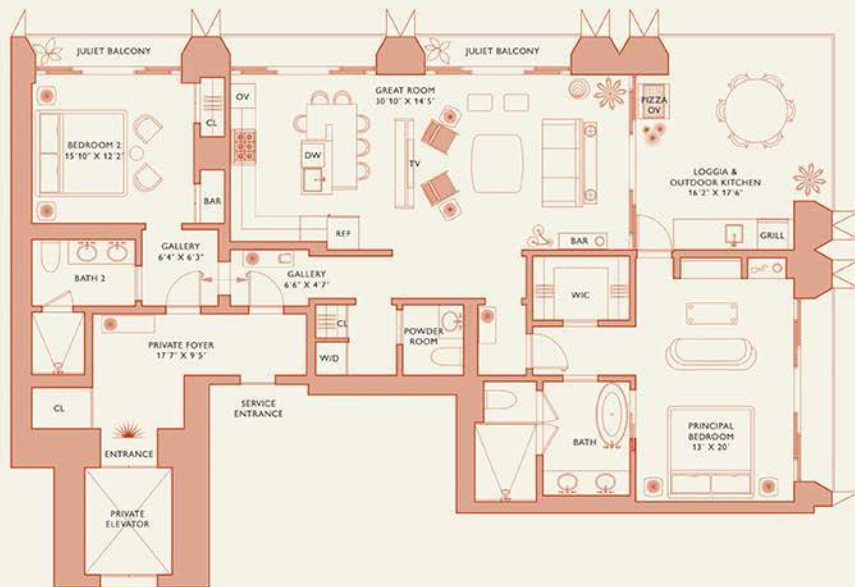
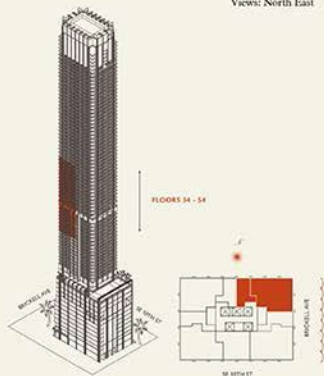
MIAMI FLORIDA



Residence B

FLOOR 34-54

Rooms	Square Footages	Features
2 Bedrooms	Indoor: 2,015 SQF	Major Suite & Major Room
2 Bathrooms	Outdoor: 395 SQF	Furniture by Studio Sofield
Powder Room	Total: 2,410 SQF	11' Ceiling Height
		4 Juliet Balconies
		Loggia & Outdoor Kitchen
		Views: North East



Biscayne Bay

Small dimensions are measured to the exterior boundaries of the exterior walls and the centerline of exterior opening walls and in feet, vary from the dimensions that would be determined by using the description and definition of the "Gross" set forth in the Declaration, which primarily only includes the interior surfaces between the perimeter walls and includes interior structural components. For your reference, the area of this plan, determined in accordance with these defined and excluded, is in fact on Exhibit "J" to the Declaration of Condominium. Note the measurements of rooms set forth on this floor plan are generally taken at the greatest points of each given room and if such given room were a perfect rectangle, without regard for any columns, beams, etc., the area of the actual room will typically be smaller than the product obtained by multiplying the stated length times width. All dimensions are approximate and may vary with actual construction, and all floor plans and development plans are subject to change.

Major Residence



MAJOR.

888 Brickell Avenue

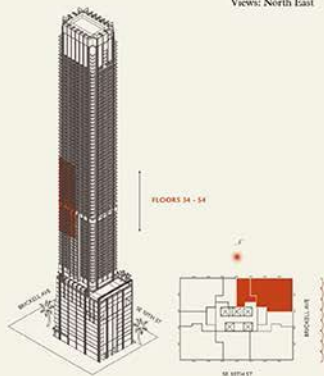
MIAMI, FLORIDA



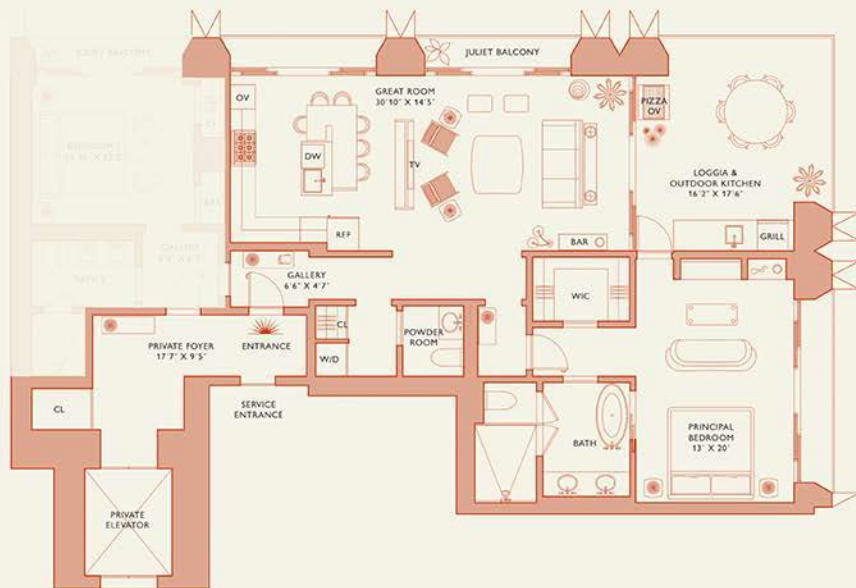
Residence B

FLOOR 34-54

Rooms	Square Footages	Features
2 Bedrooms	Indoor: 2,015 SQF	Major Suite & Major Room
2 Bathrooms	Outdoor: 395 SQF	Furniture by Studio Sofield
Powder Room	Total: 2,410 SQF	11' Ceiling Height
		4 Juliet Balconies
		Loggia & Outdoor Kitchen
		Views: North East



Small dimensions are measured to the exterior boundaries of the exterior walls and the centerline of exterior opening walls and in feet, vary from the dimensions that would be determined by using the description and definition of the "Total" set forth in the Declaration, which generally only includes the interior openings between the perimeter walls and includes interior structural components. For your reference, the area of this Unit, determined in accordance with these defined and bounded, is set forth on Exhibit "J" to the Declaration of Condominium. Note the measurements of rooms set forth on this floor plan are generally taken at the gross points of each given room and if the room were a perfect rectangle, without regard for any columns, beams, etc., the area of the actual room will typically be smaller than the product obtained by multiplying the stated length times width. All dimensions are approximate and may vary with actual construction, and all floor plans and development plans are subject to change.



Biscayne Bay

Major Suite



MAJOR.

888 Brickell Avenue

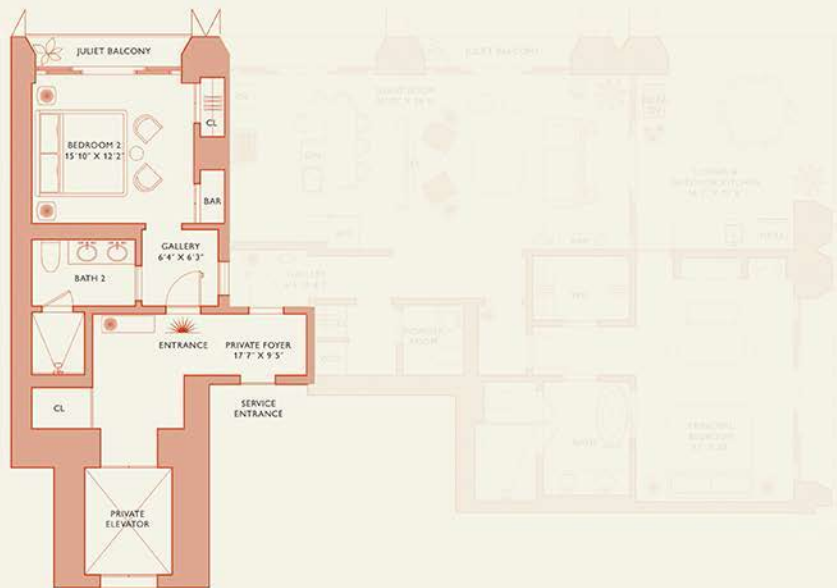
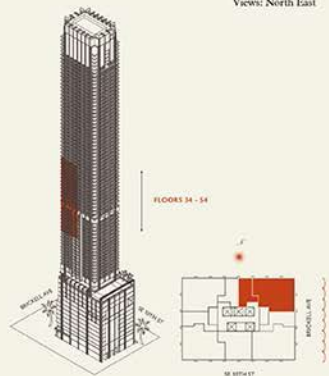
MIAMI FLORIDA



Residence B

FLOOR 34-54

Rooms	Square Footages	Features
2 Bedrooms	Indoor: 2,015 SQF	Major Suite & Major Room
2 Bathrooms	Outdoor: 395 SQF	Furniture by Studio Sofield
Powder Room	Total: 2,410 SQF	11' Ceiling Height
		4 Juliet Balconies
		Loggia & Outdoor Kitchen
		Views: North East



Brickell Bay

Standard dimensions are measured to the exterior boundaries of the exterior walls and the centerline of exterior opening walls and are not true from the dimensions that would be determined by using the description and definition of the "false" set forth in the Declaration. This plan primarily only includes the interior openings between the partition walls and includes interior structural components. For your reference, the area of this plan, determined in accordance with the standard unit boundaries, is in fact on Exhibit "J" to the Declaration of Condominium. Note the measurements of rooms set forth on this floor plan are generally taken at the ground plane of each given room with a parallel rectangle, without regard for any columns. Accordingly, the area of the actual room will typically be smaller than the product obtained by multiplying the stated length times width. All dimensions are approximate and may vary with actual construction, and all floor plans and development plans are subject to change.

Major Room



MAJOR.

888 Brickell Avenue

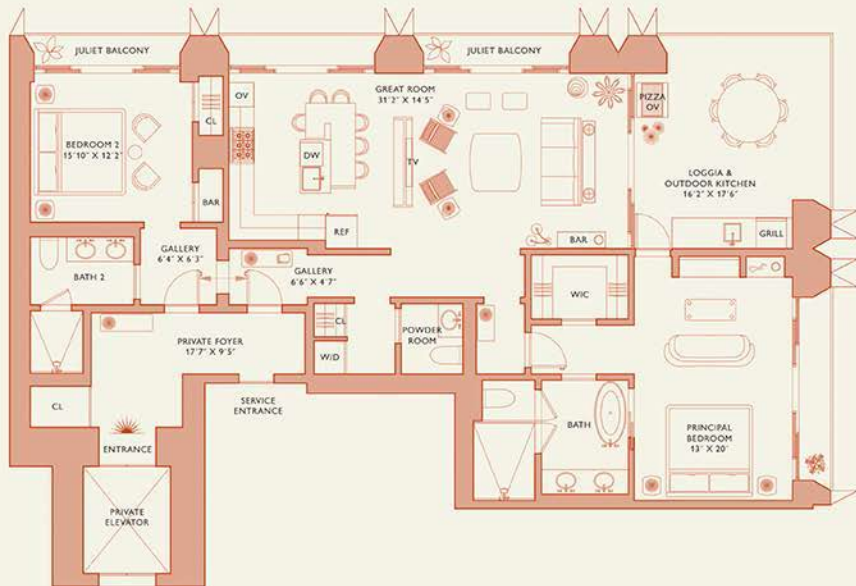
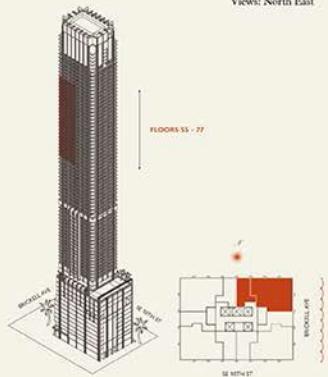
MIAMI FLORIDA



Residence B

FLOOR 55-77

Rooms	Square Footages	Features
2 Bedrooms	Indoor: 2,015 SQF	Major Suite & Major Room
2 Bathrooms	Outdoor: 395 SQF	Furniture by Studio Sofield
Powder Room	Total: 2,410 SQF	11' Ceiling Height
		3 Juliet Balconies
		Loggia & Outdoor Kitchen
		Views: North East



Biscayne Bay

Small dimensions are measured to the exterior boundaries of the exterior walls and the centerline of exterior opening walls and are not vary from the dimensions that would be determined by using the description and definition of the "Finish" set forth in the Declaration. Interior dimensions generally only include the interior openings between the partition walls and exclude exterior structural components. For your reference, the area of this unit, measured in accordance with these defined unit boundaries, is set forth on Exhibit "J" to the Declaration of Condominium. Note the measurements of rooms set forth on this floor plan are generally taken at the gross points of each given room and do not include a portion of the wall, without regard for any columns. Accordingly, the area of the actual room will typically be smaller than the product obtained by multiplying the stated length times width. All dimensions are approximate and may vary with actual construction, and all floor plans and development plans are subject to change.

Major Residence



MAJOR.

888 Brickell Avenue

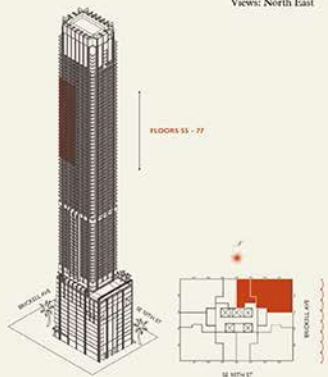
MIAMI FLORIDA



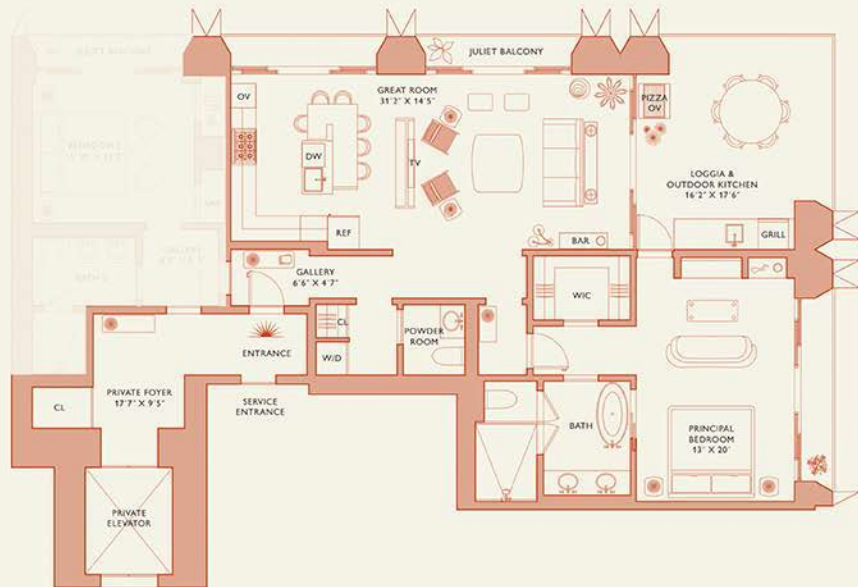
Residence B

FLOOR 55-77

Rooms	Square Footages	Features
2 Bedrooms	Indoor: 2,015 SQF	Major Suite & Major Room
2 Bathrooms	Outdoor: 395 SQF	Furniture by Studio Sofield
Powder Room	Total: 2,410 SQF	11' Ceiling Height
		3 Juliet Balconies
		Loggia & Outdoor Kitchen
		Views: North East



Small dimensions are measured to the exterior boundaries of the exterior walls and the centerline of exterior opening walls and are not vary from the dimensions that would be determined by using the description and definition of the "Gross" set forth in the Declaration, which generally only includes the interior areas between the perimeter walls and includes interior structural components. For your reference, the area of this Unit, measured in accordance with these defined area boundaries, is set forth on Exhibit "J" to the Declaration of Condominium. Note that measurements of rooms set forth on this floor plan are generally taken at the greatest points of each given room and do not include a portion of the wall, without regard for any columns. Accordingly, the area of the actual room will typically be smaller than the product obtained by multiplying the stated length times width. All dimensions are approximate and may vary with actual construction, and all floor plans and development plans are subject to change.



Biscayne Bay

Major Suite



MAJOR.

888 Brickell Avenue

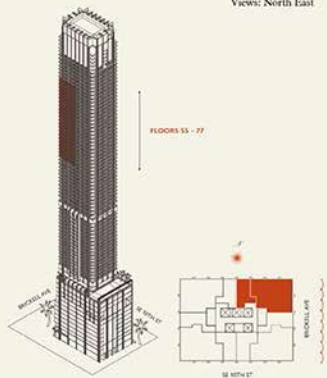
MIAMI, FLORIDA



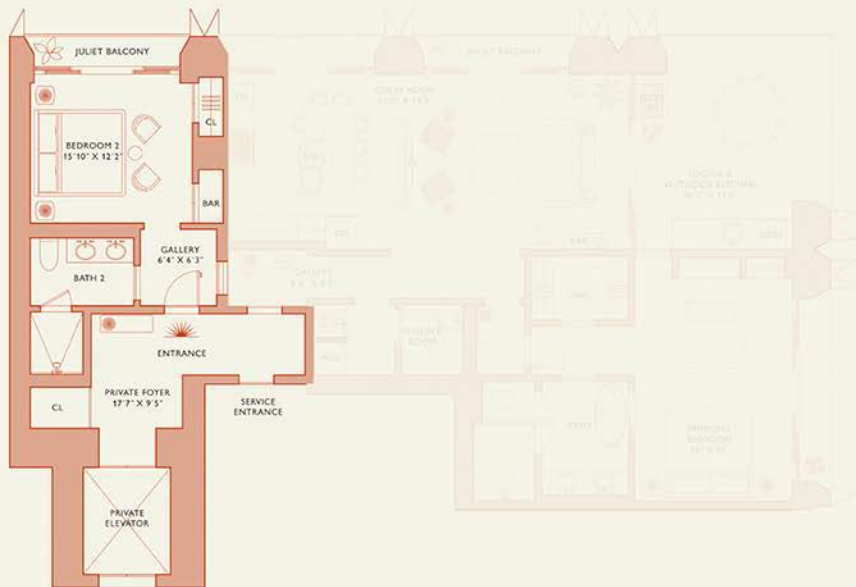
Residence B

FLOOR 55-77

Rooms	Square Footages	Features
2 Bedrooms	Indoor: 2,015 SQF	Major Suite & Major Room
2 Bathrooms	Outdoor: 395 SQF	Furniture by Studio Sofield
Powder Room	Total: 2,410 SQF	11' Ceiling Height
		3 Juliet Balconies
		Loggia & Outdoor Kitchen
		Views: North East



Small dimensions are measured to the exterior boundaries of the exterior walls and the centerline of exterior opening walls and are not, vary from the dimensions that would be determined by using the description and definition of the "Gross" set forth in the Declaration, which generally only includes the interior area between the exterior walls and includes exterior structural components. For your reference, the area of this plan, determined in accordance with these defined area boundaries, is set forth on Exhibit "J" to the Declaration of Condominium. Note the measurements of rooms set forth on this floor plan are generally taken at the ground plane of each given room and do not include any protrusions, without regard for any columns. Accordingly, the area of the actual room will typically be smaller than the product obtained by multiplying the stated length times width. All dimensions are approximate and may vary with actual construction, and all floor plans and development plans are subject to change.



Biscayne Bay

Major Room



MAJOR.

888 Brickell Avenue

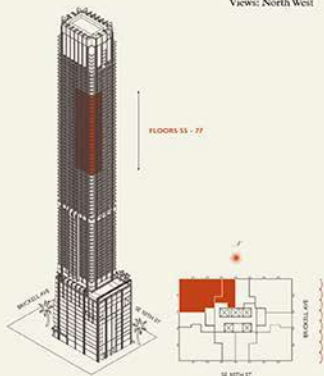
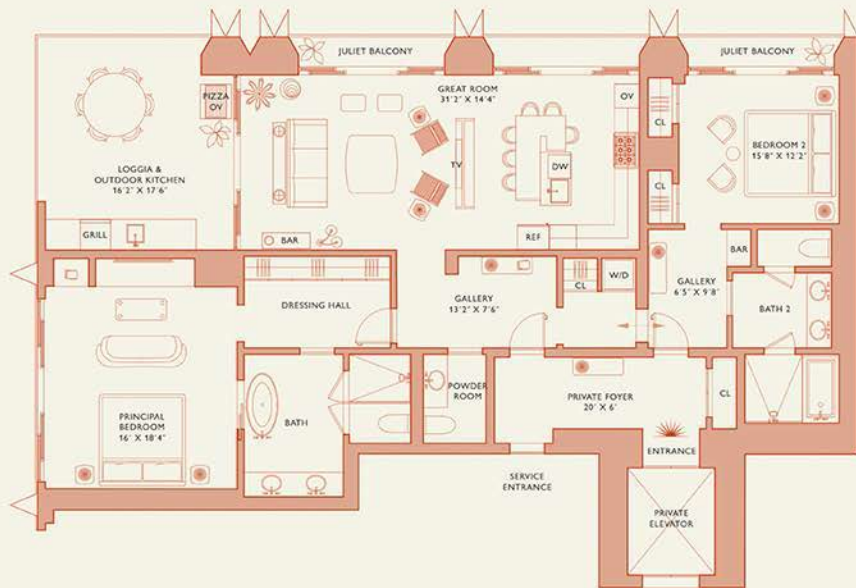
MIAMI FLORIDA



Residence C

FLOOR 55-77

Rooms	Square Footages	Features
2 Bedrooms	Indoor: 2,085 SQF	Major Suite & Major Room
2 Bathrooms	Outdoor: 365 SQF	Furniture by Studio Sofield
Powder Room	Total: 2,450 SQF	11' Ceiling Height
		3 Juliet Balconies
		Loggia & Outdoor Kitchen
		Views: North West



Biscayne Bay

Small dimensions are measured to the exterior boundaries of the exterior walls and the centerline of exterior opening walls and are not vary from the dimensions that would be determined by using the description and definition of the "Gross" set forth in the Declaration. This plan primarily only includes the interior areas between the perimeter walls and includes interior structural components. For your reference, the area of this plan, measured in accordance with these defined and boundaries, is in fact on Exhibit "F" to the Declaration of Condominium. Note the measurements of rooms set forth on this floor plan are generally taken at the gross points of each given room and do not include a portion of the wall, without regard for any columns. Accordingly, the area of the actual room will typically be smaller than the product obtained by multiplying the stated length times width. All dimensions are approximate and may vary with actual construction, and all floor plans and development plans are subject to change.

Major Residence



MAJOR.

888 Brickell Avenue

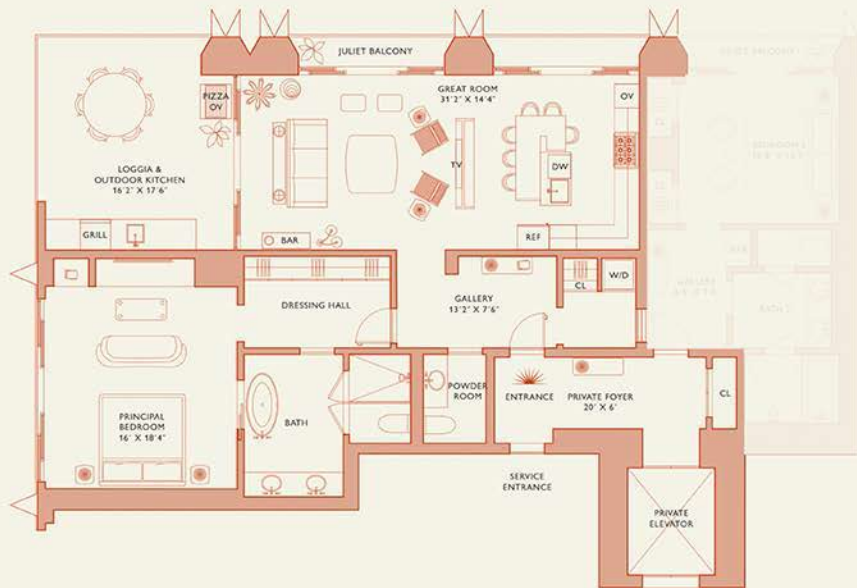
MIAMI FLORIDA



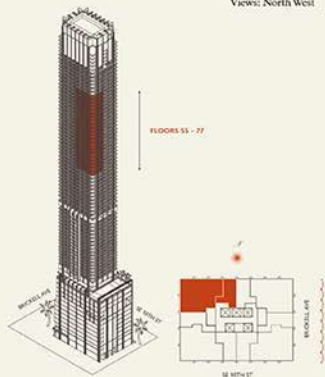
Residence C

FLOOR 55-77

Rooms	Square Footages	Features
2 Bedrooms	Indoor: 2,085 SQF	Major Suite & Major Room
2 Bathrooms	Outdoor: 365 SQF	Furniture by Studio Sofield
Powder Room	Total: 2,450 SQF	11' Ceiling Height
		3 Juliet Balconies
		Loggia & Outdoor Kitchen
		Views: North West



Biscayne Bay



Small dimensions are measured to the exterior boundaries of the exterior walls and the centerline of exterior opening walls and do not vary from the dimensions that would be determined by using the description and definition of the "Gross" set forth in the Declaration (which generally only includes the interior openings between the exterior walls and includes exterior structural components). For your reference, the area of this plan, measured in accordance with these defined and bounded, is in fact on Exhibit "J" to the Declaration of Condominium. Note the measurements of rooms set forth on this floor plan are generally taken at the gross points of each gross room and a perfect rectangle, without regard for any columns. Accordingly, the area of the actual room will typically be smaller than the product obtained by multiplying the stated length times width. All dimensions are approximate and may vary with actual construction, and all floor plans and development plans are subject to change.

Major Suite



MAJOR.

888 Brickell Avenue

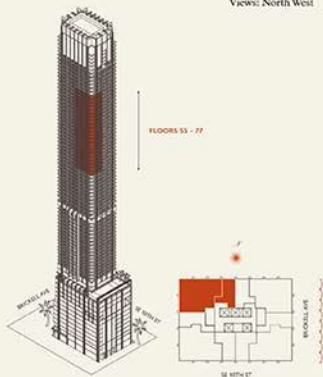
MIAMI FLORIDA



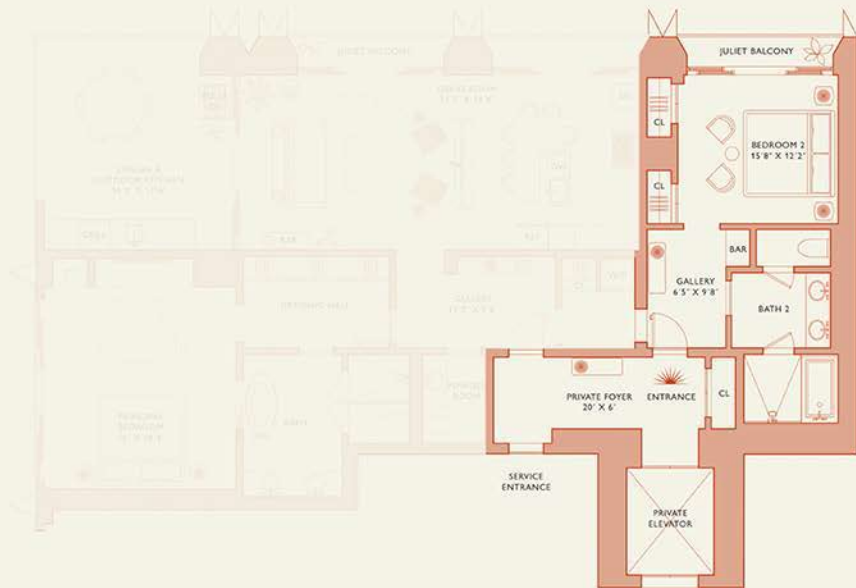
Residence C

FLOOR 55-77

Rooms	Square Footages	Features
2 Bedrooms	Indoor: 2,085 SQF	Major Suite & Major Room
2 Bathrooms	Outdoor: 365 SQF	Furniture by Studio Sofield
Powder Room	Total: 2,450 SQF	11' Ceiling Height
		3 Juliet Balconies
		Loggia & Outdoor Kitchen
		Views: North West



Small dimensions are measured to the exterior boundaries of the exterior walls and the centerline of exterior opening walls and are not true from the dimensions that would be determined by using the description and definition of the "false" set forth in the Declaration, which generally only includes the interior openings between the perimeter walls and includes exterior structural components. For your reference, the area of this unit, measured as a rectangle, is approximately 5,000 sq. ft. Note that the area of the actual room will typically be smaller than the product obtained by multiplying the stated length times width. All dimensions are approximate and may vary with actual construction, and all floor plans and development plans are subject to change.



Biscayne Bay

Major Room



MAJOR.

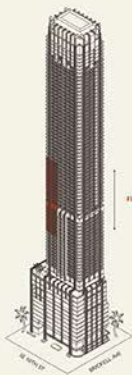
888 Brickell Avenue

MIAMI FLORIDA

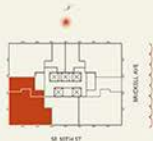
Residence D

FLOOR 34-54

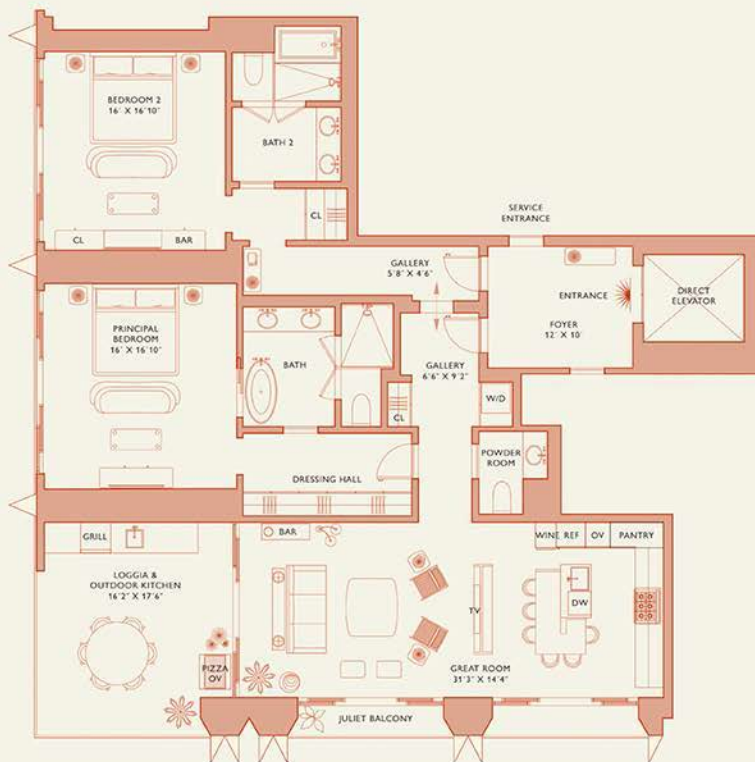
Rooms	Square Footages	Features
2 Bedrooms	Indoor: 1,925 SQF	Major Suite & Major Room
2 Bathrooms	Outdoor: 360 SQF	Furniture by Studio Sofield
Powder Room	Total: 2,285 SQF	11" Ceiling Height
		2 Juliet Balconies
		Loggia & Outdoor Kitchen
		Views: South West



FLOORS 34 - 54



Small dimensions are measured to the exterior boundaries of the exterior walls and the centerline of exterior finishing walls and are not vary from this dimension that would be determined by using the description and definition of the "Total" set forth in the Declaration, which primarily only includes the interior finishes between the partition walls and includes interior structural components. For your reference, the area of this unit, determined in accordance with these defined unit boundaries, is in fact on Exhibit "J" to the Declaration of Condominium. Note the measurements of rooms set forth on this floor plan are generally taken at the present point of each given room which is a perfect rectangle, without regard for any columns. Accordingly, the area of the actual room will typically be smaller than the product obtained by multiplying the stated length times width. All dimensions are approximate and may vary with actual construction, and all floor plans and development plans are subject to change.



Biscayne Bay

Major Residence



MAJOR.

888 Brickell Avenue

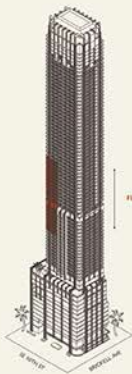
MIAMI FLORIDA



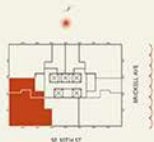
Residence D

FLOOR 34-54

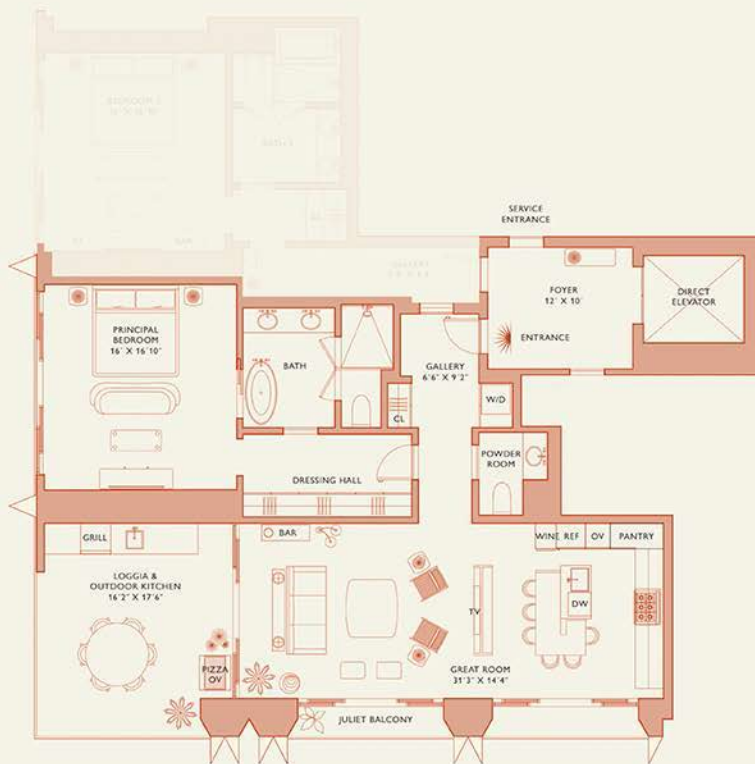
Rooms	Square Footages	Features
2 Bedrooms	Indoor: 1,925 SQF	Major Suite & Major Room
2 Bathrooms	Outdoor: 360 SQF	Furniture by Studio Sofas
Powder Room	Total: 2,285 SQF	11" Ceiling Height
		2 Juliet Balconies
		Loggia & Outdoor Kitchen
		Views: South West



FLOORS 34 - 54



Small dimensions are measured to the exterior boundaries of the exterior walls and the centerline of exterior opening walls and are not vary from the dimensions that would be determined by using the description and definition of the "Take" set forth in the Declaration, which primarily only includes the interior finishes between the partition walls and includes exterior structural components. For your reference, the area of this plan, furnished as a courtesy, shall include such boundaries, as set forth on Exhibit "J" to the Declaration of Condominium. Note the measurements of rooms set forth on this floor plan are generally taken at the ground plane of each floor (room walls are a parallel rectangle, without regard for any columns). Accordingly, the area of the actual room will typically be smaller than the product obtained by multiplying the stated length times width. All dimensions are approximate and may vary with actual construction, and all floor plans and development plans are subject to change.



Biscayne Bay

Major Suite



MAJOR.

888 Brickell Avenue

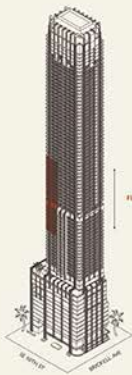
MIAMI FLORIDA



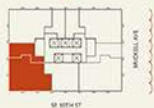
Residence D

FLOOR 34-54

Rooms	Square Footages	Features
2 Bedrooms	Indoor: 1,925 SQF	Major Suite & Major Room
2 Bathrooms	Outdoor: 360 SQF	Furniture by Studio Sofield
Powder Room	Total: 2,285 SQF	11' Ceiling Height
		2 Juliet Balconies
		Loggia & Outdoor Kitchen
		Views: South West



FLOORS 34 - 54



Small dimensions are measured to the exterior boundaries of the exterior walls and the centerline of exterior opening walls and are not true from this document, they would be determined by using the description and definition of the "true" set forth in the Declaration, which generally only includes the interior surfaces between the partition walls and includes exterior structural components. For your reference, the area of this plan, furnished, is a coordinate with these defined and boundaries, as set forth on Exhibit "J" to the Declaration of Condominium. Note that measurements of rooms set forth on this floor plan are generally taken at the ground plane of each floor, room walls are a uniform rectangle, without regard for any columns. Accordingly, the area of the actual room will typically be smaller than the product obtained by multiplying the stated length times width. All dimensions are approximations and may vary with actual construction, and all floor plans and development plans are subject to change.



Biscayne Bay

Major Room



MAJOR.

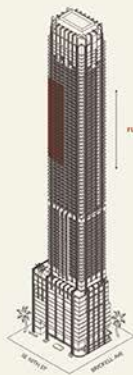
888 Brickell Avenue

MIAMI FLORIDA

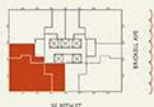
Residence D

FLOOR 55-77

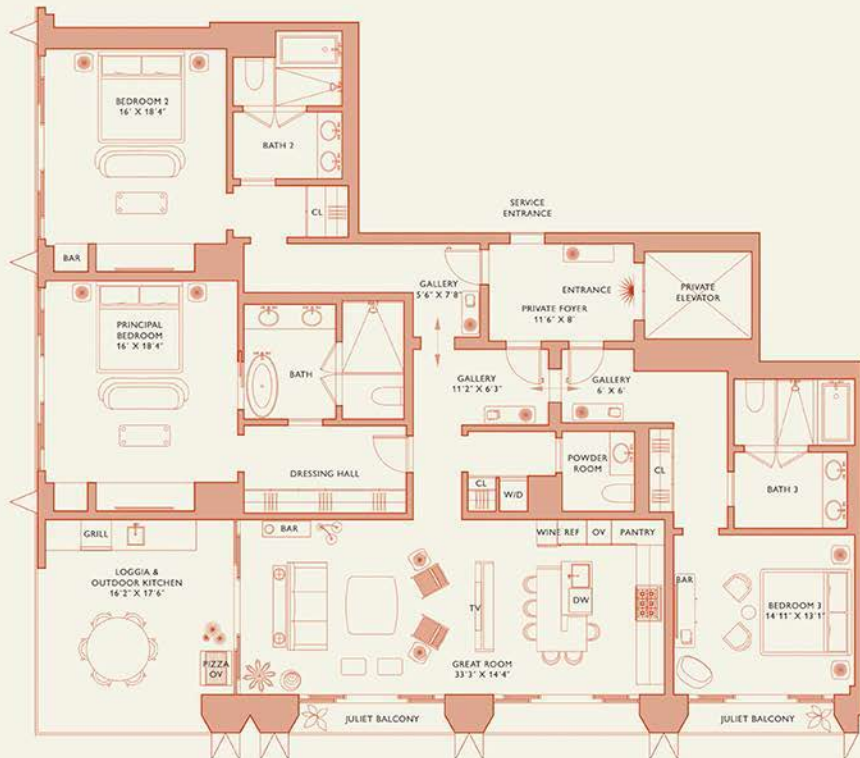
Rooms	Square Footage	Features
3 Bedrooms	Indoor: 2,660 SQF	Major Suite & Major Rooms
3 Bathrooms	Outdoor: 385 SQF	Furniture by Studio Sofield
Powder Room	Total: 3,045 SQF	11" Ceiling Height
		3 Juliet Balconies
		Loggia & Outdoor Kitchen
		Views: South West



FLOORS 55 - 77



Small dimensions are measured to the exterior boundary of the exterior wall and the centerline of exterior opening walls and in feet, vary from the dimensions that would be determined by using the description and definition of the "Net" set forth in the Declaration, which generally only includes the interior spaces between the partition walls and includes interior structural components. For your reference, the area of this Unit, determined in accordance with these defined unit boundaries, is set forth on Exhibit "J" to the Declaration of Condominium. Note that measurements of rooms set forth on this floor plan are generally taken at the ground plane of each floor from corner to corner, without regard for any columns. Accordingly, the area of the actual room will typically be smaller than the product obtained by multiplying the stated length times width. All dimensions are approximate and may vary with actual construction, and all floor plans and development plans are subject to change.



Biscayne Bay

Major Residence



MAJOR.

888 Brickell Avenue

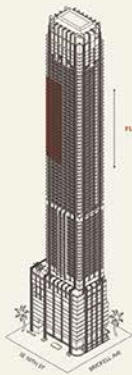
MIAMI, FLORIDA



Residence D

FLOOR 55-77

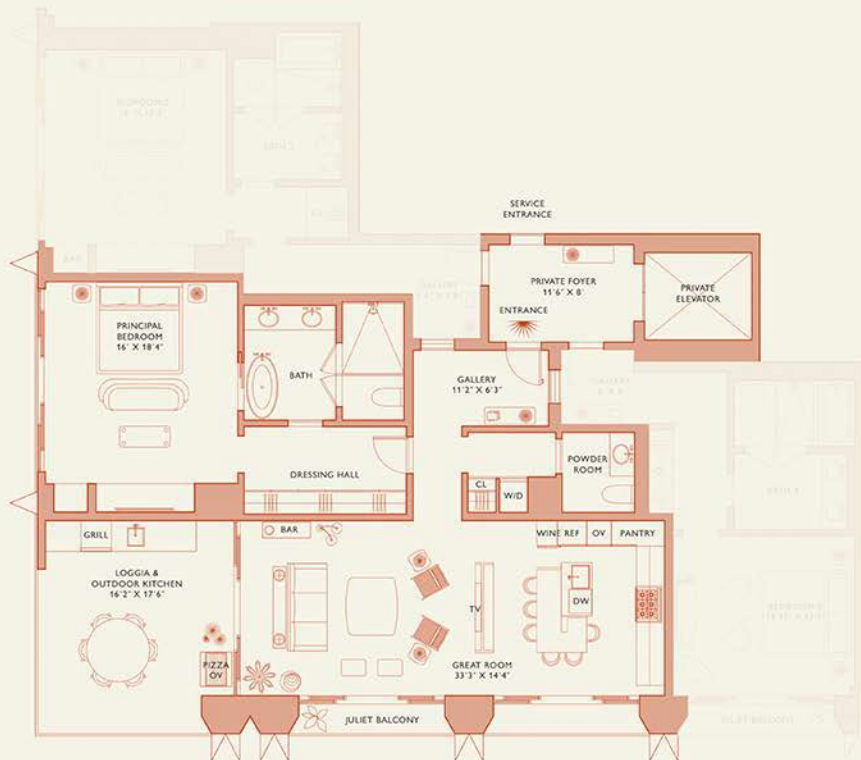
Rooms	Square Footage	Features
3 Bedrooms	Indoor: 2,660 SQF	Major Suite & Major Rooms
3 Bathrooms	Outdoor: 385 SQF	Furniture by Studio Sofield
Powder Room	Total: 3,045 SQF	11' Ceiling Height
		3 Juliet Balconies
		Loggia & Outdoor Kitchen
		Views: South West



FLOORS 55 - 77



Small dimensions are measured to the exterior boundaries of the exterior walls and the centerline of exterior opening walls and in feet, vary from the dimensions that would be determined by using the description and definition of the "Total" set forth in the Description. Values generally only include the interior finishes between the partition walls and include interior structural components. For your reference, the area of this Unit, determined in accordance with these defined unit boundaries, is set forth on Exhibit "J" to the Declaration of Condominium. Note the measurements of rooms set forth on this floor plan are generally taken at the ground plane of each floor, room walls are perfectly rectangular, without regard for any columns. Furthermore, the area of the actual room will typically be smaller than the product obtained by multiplying the stated length times width. All dimensions are approximate and may vary with actual construction, and all floor plans and development plans are subject to change.



Biscayne Bay

Major Suite



MAJOR.

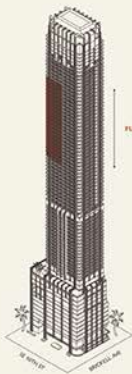
888 Brickell Avenue

MIAMI FLORIDA

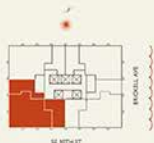
Residence D

FLOOR 55-77

Rooms	Square Footages	Features
3 Bedrooms	Indoor: 2,660 SQF	Major Suite & Major Rooms
3 Bathrooms	Outdoor: 385 SQF	Furniture by Studio Sofield
Powder Room	Total: 3,045 SQF	11' Ceiling Height
		3 Juliet Balconies
		Loggia & Outdoor Kitchen
		Views: South West



FLOORS 55 - 77



Small dimensions are measured to the exterior boundaries of the exterior walls and the centerline of exterior opening walls and in feet, vary from the dimensions that would be determined by using the description and definition of the "Gross" set forth in the Declaration, which generally only includes the interior spaces between the partition walls and includes interior structural components. For your reference, the area of this Unit, measured in accordance with these defined unit boundaries, is set forth on Exhibit "F" to the Declaration of Condominium. Note the measurements of rooms set forth on this floor plan are generally taken at the ground plane of each floor, room walls are perfectly rectangular, without regard for any columns. Accordingly, the area of the actual room will typically be smaller than the product obtained by multiplying the stated length times width. All dimensions are approximate and may vary with actual construction, and all floor plans and development plans are subject to change.



Brickell Bay

Major Room 1



MAJOR.

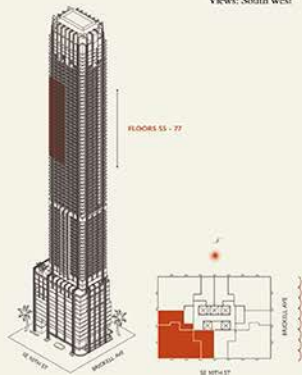
888 Brickell Avenue

MIAMI, FLORIDA

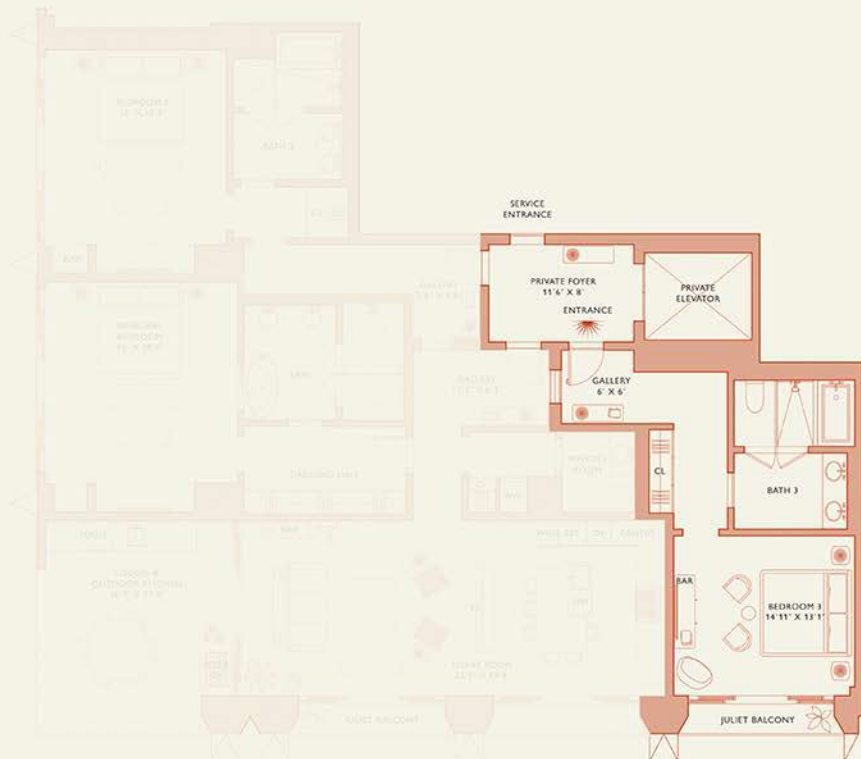
Residence D

FLOOR 55-77

Rooms	Square Footages	Features
3 Bedrooms	Indoor: 2,660 SQF	Major Suite & Major Rooms
3 Bathrooms	Outdoor: 385 SQF	Furniture by Studio Sofield
Powder Room	Total: 3,045 SQF	11' Ceiling Height
		3 Juliet Balconies
		Loggia & Outdoor Kitchen
		Views: South West



Stated dimensions are measured to the exterior boundaries of the exterior walls and the centerline of exterior opening walls and do not vary from the dimensions that would be determined by using the description and definition of the "Shed" set forth in the Declaration, which generally only includes the interior surfaces between the perimeter walls and excludes exterior structural components. For your reference, the area of the Unit, determined in accordance with those defined area boundaries, is set forth on Exhibit "F" to the Declaration of Condominium. Note that measurements of rooms set forth on this floor plan are generally taken at the greatest points of each given room (or if the room were a perfect rectangle, without regard for any columns). Accordingly, the area of the actual room will typically be smaller than the product obtained by multiplying the stated length times width. All dimensions are approximations and may vary with actual construction, and all floor plans and development plans are subject to change.



Brickell Bay

Major Room 2



MAJOR.

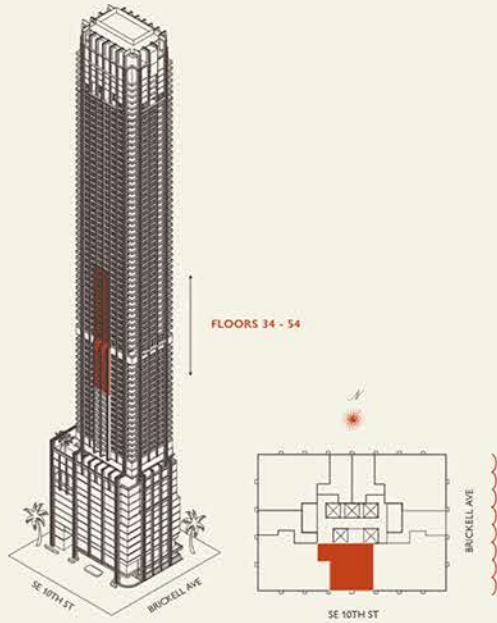
888 Brickell Avenue

MIAMI FLORIDA

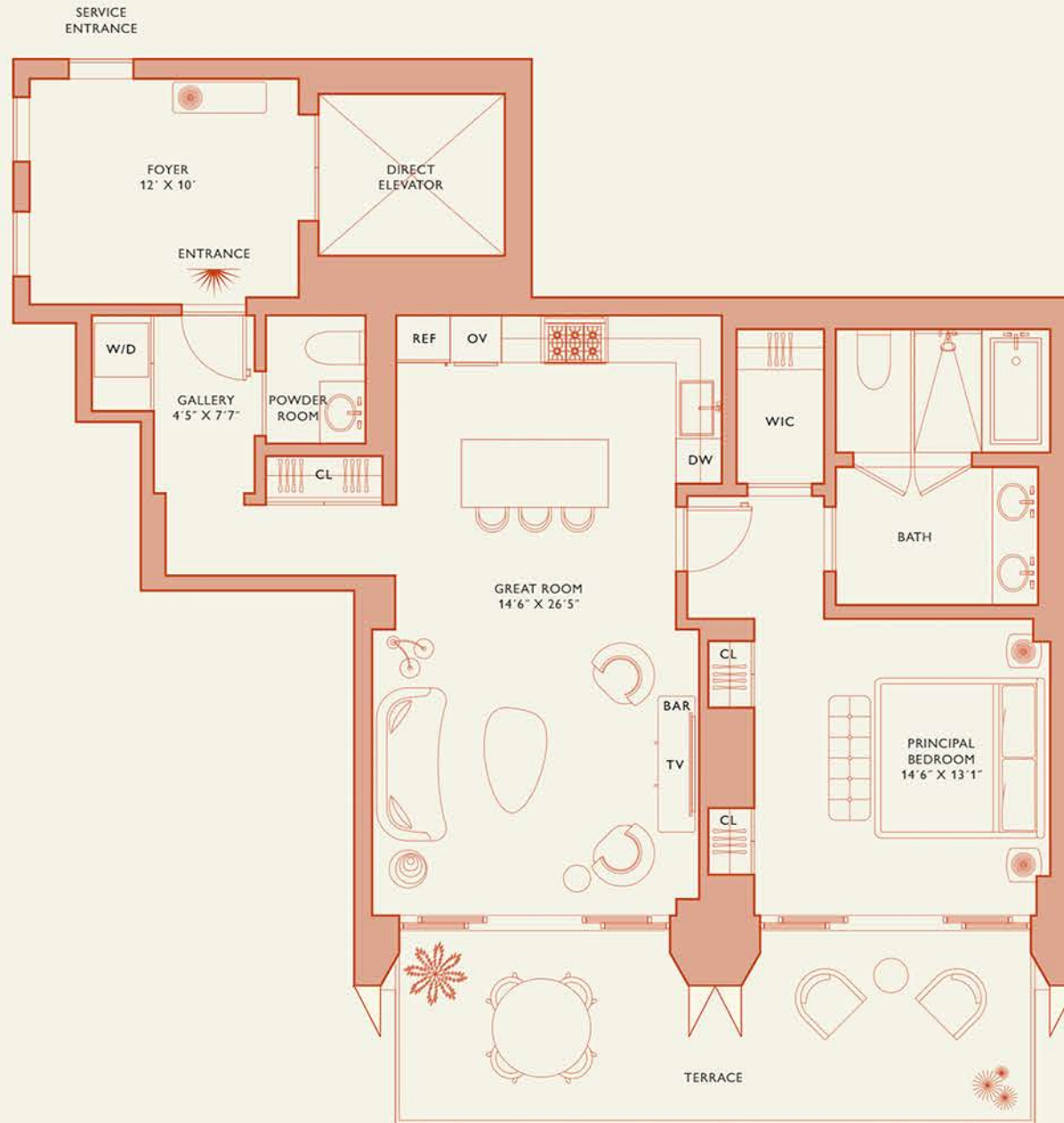
Residence C

FLOOR 34-54

Rooms	Square Footages	Features
Bedroom	Indoor: 1,050 SQF	Furniture by Studio Sofield
Bathroom	Outdoor: 235 SQF	11' Ceiling Height
Powder Room	Total: 1,285 SQF	Terrace Views: South



Stated dimensions are measured to the exterior boundaries of the exterior walls and the centerline of interior demising walls and in fact vary from the dimensions that would be determined by using the description and definition of the "Unit" set forth in the Declaration (which generally only includes the interior airspace between the perimeter walls and excludes interior structural components). For your reference, the area of the Unit, determined in accordance with those defined unit boundaries, is set forth on Exhibit "3" to the Declaration of Condominium. Note that measurements of rooms set forth on this floor plan are generally taken at the greatest points of each given room (as if the room were a perfect rectangle), without regard for any cutouts. Accordingly, the area of the actual room will typically be smaller than the product obtained by multiplying the stated length times width. All dimensions are approximate and may vary with actual construction, and all floor plans and development plans are subject to change.



Biscayne Bay

Major Residence



MAJOR.

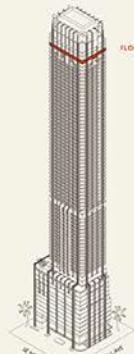
888 Brickell Avenue

MIAMI, FLORIDA

Penthouse

FLOOR 87

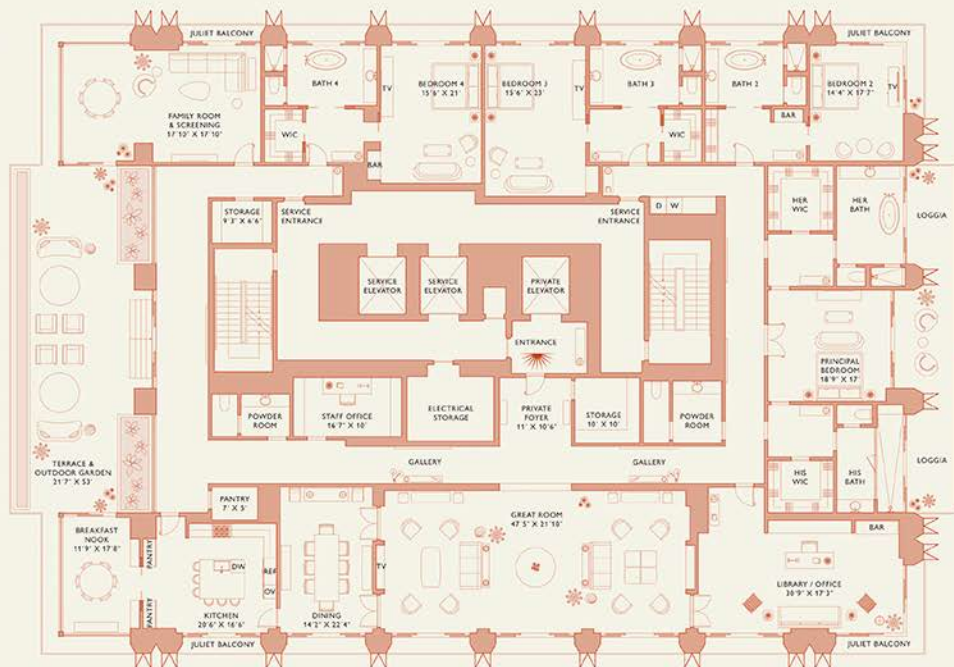
Rooms	Square Footages	Features
4 Bedrooms	Indoor: 9,780 SQF	Major Penthouse
5 Bathrooms	Outdoor: 1,370 SQF	Furniture by Studio Sofield
2 Powder Rooms	Total: 11,150 SQF	11' Ceiling Height
		14 Juliet Balconies
		3 Private Loggias
		Terrace & Outdoor Garden
		360° Views



FLOOR 87



11' 10" x 17'



Bayview Bay

Stated dimensions are measured to the exterior boundaries of the exterior walls and the centerline of exterior opening walls and in feet and inches. The dimensions that would be determined by using the description and definition of the "Net" set forth in the Declaration (which generally only includes the exterior surface of the perimeter walls and excludes interior structural components). For your reference, the area of the Unit, determined in accordance with those defined area boundaries, is set forth in Exhibit "F" to the Declaration of Condominiums. Note that measurements of rooms set forth on this floor plan are generally taken at the greatest points of each given room (as if the room were a perfect rectangle), without regard for any columns. Accordingly, the area of the actual room will typically be smaller than the product obtained by multiplying the stated length times width. All dimensions are approximations and may vary with actual construction, and all floor plans and development plans are subject to change.

Major Penthouse

11' 10" x 17'

11' 10" x 17'