

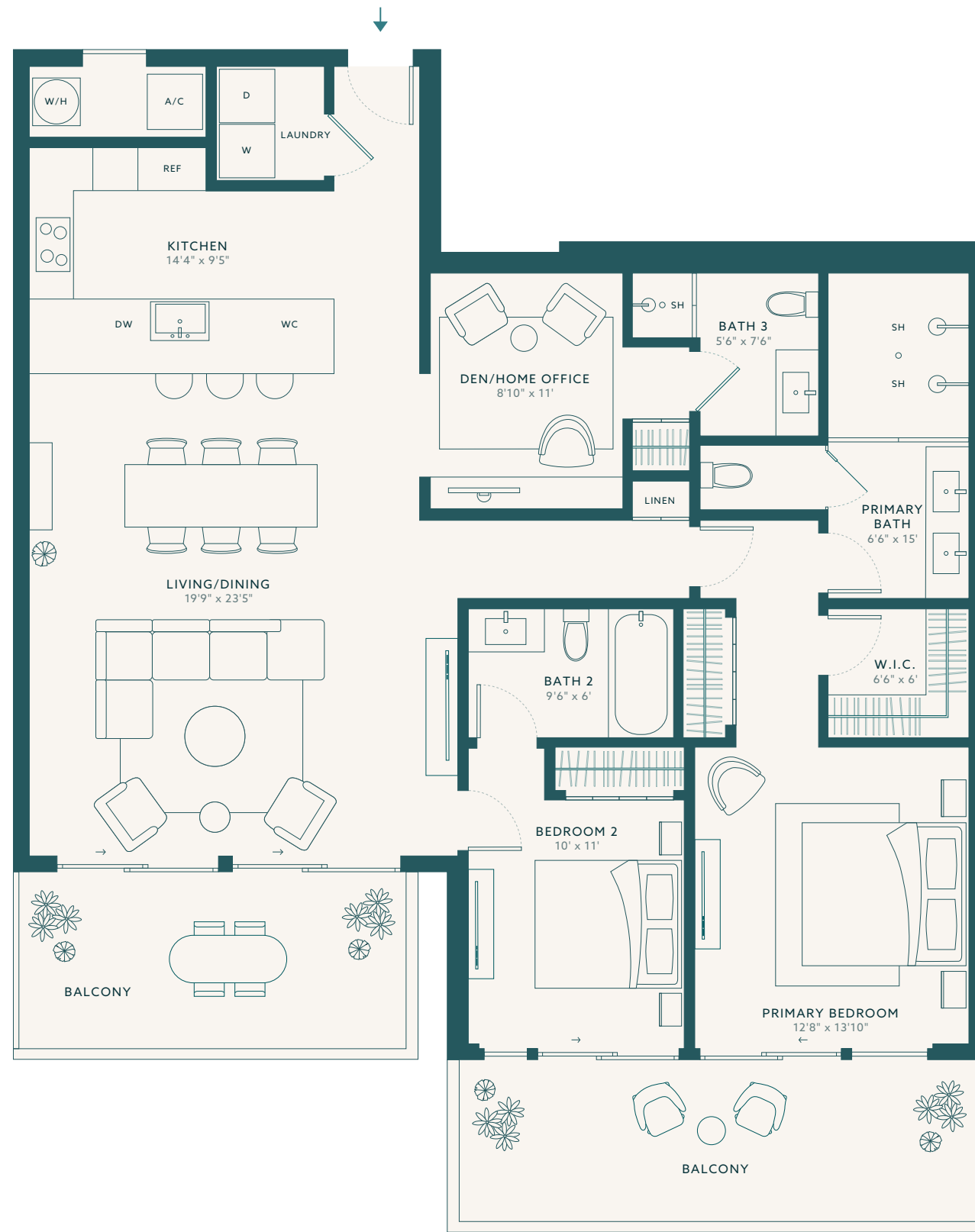
  
**Sunset  
 Collection**

Lower Penthouse  
 Residence

**04**

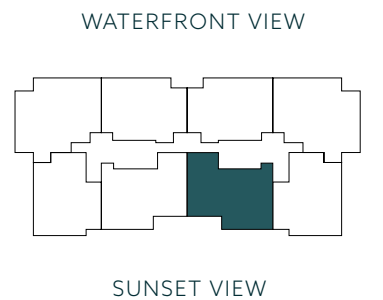
Level 7

2 BEDROOMS  
 3 BATHROOMS  
 DEN



  
 Sunset View

**LA BAIA**  
 NORTH



**INTERIOR**  
 1,616 SQ FT ~ 150 SQ M

**EXTERIOR**  
 340 SQ FT ~ 31 SQ M

**TOTAL**  
 1,956 SQ FT ~ 181 SQ M

Stated dimensions are measured to the exterior boundaries of the exterior walls and the centerline of interior demising walls and in fact vary from the dimensions that would be determined by using the description and definition of the "Unit" set forth in the Declaration (which generally only includes the interior airspace between the perimeter walls and excludes interior structural components). For your reference, the area of the Unit, determined in accordance with those defined unit boundaries, is 1,616 square footage. Note that measurements of rooms set forth on this floor plan are generally taken at the greatest points of each given room (as if the room were a perfect rectangle), without regard for any cutouts. Accordingly, the area of the actual room will typically be smaller than the product obtained by multiplying the stated length times width. All dimensions are approximate and may vary with actual construction, and all floor plans and development plans are subject to change.



  
Sunset  
Collection

Residence

02

2 BEDROOMS  
2.5 BATHROOMS  
DEN

RESIDENCES

302, 402, 502 & 602

INTERIOR

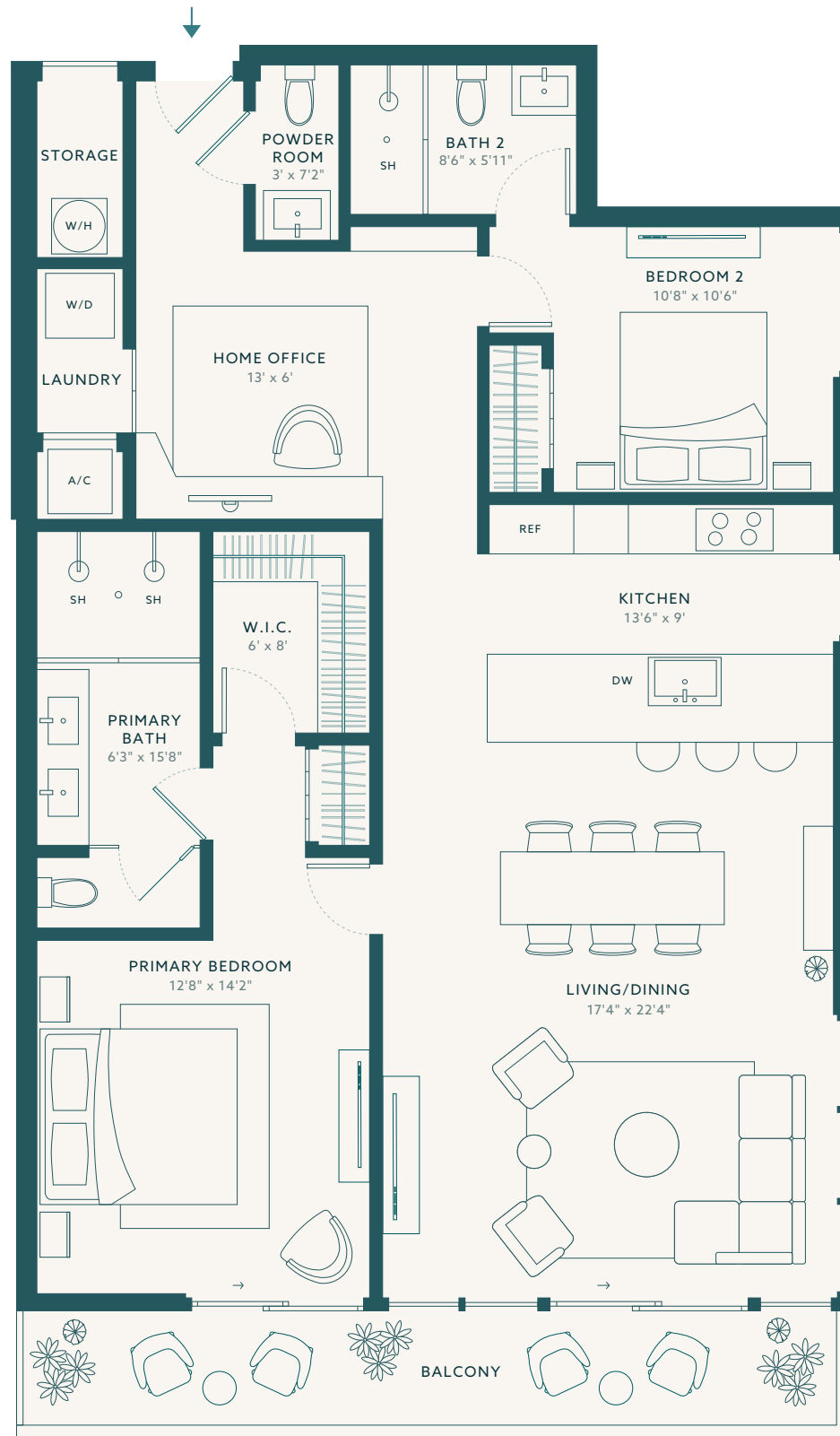
1,450 SQ FT ~ 135 SQ M

EXTERIOR

168 SQ FT ~ 15 SQ M

TOTAL

1,618 SQ FT ~ 150 SQ M

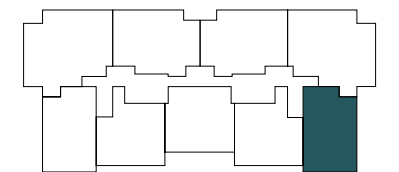


  
Sunset View

LA BAIA  
NORTH



WATERFRONT VIEW



SUNSET VIEW

Stated dimensions are measured to the exterior boundaries of the exterior walls and the centerline of interior demising walls and in fact vary from the dimensions that would be determined by using the description and definition of the "Unit" set forth in the Declaration (which generally only includes the interior airspace between the perimeter walls and excludes interior structural components). For your reference, the area of the Unit, determined in accordance with those defined unit boundaries, is 1,450 square footage. Note that measurements of rooms set forth on this floor plan are generally taken at the greatest points of each given room (as if the room were a perfect rectangle), without regard for any cutouts. Accordingly, the area of the actual room will typically be smaller than the product obtained by multiplying the stated length times width. All dimensions are approximate and may vary with actual construction, and all floor plans and development plans are subject to change.



  
Sunset  
Collection

Residence

10

2 BEDROOMS  
2.5 BATHROOMS  
DEN

RESIDENCES

310, 410, 510 & 610

INTERIOR

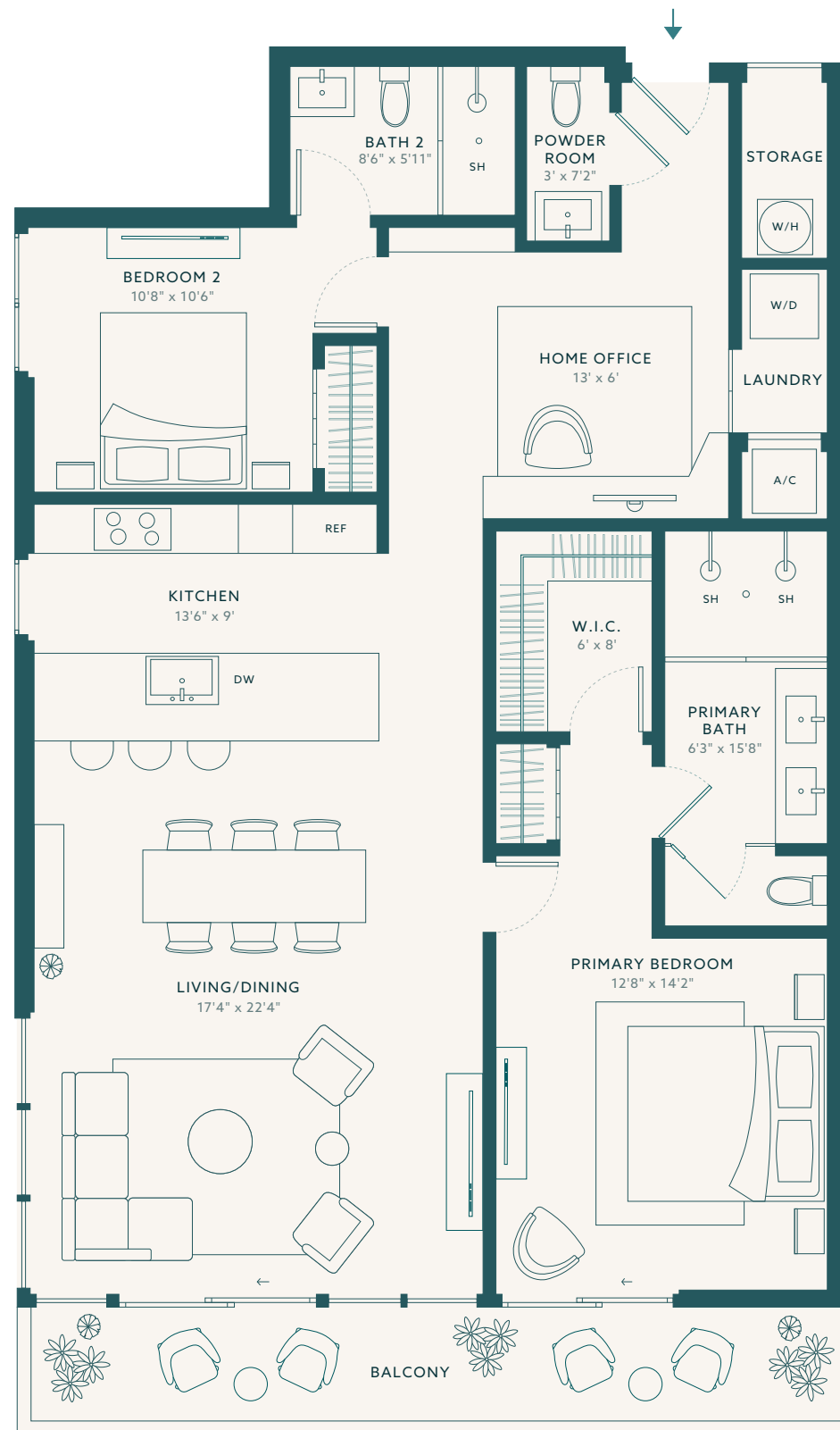
1,450 SQ FT ~ 135 SQ M

EXTERIOR

168 SQ FT ~ 15 SQ M

TOTAL

1,618 SQ FT ~ 150 SQ M

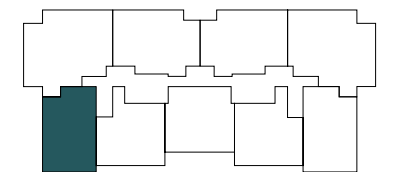


  
Sunset View

LA BAIA  
NORTH



WATERFRONT VIEW



SUNSET VIEW

Stated dimensions are measured to the exterior boundaries of the exterior walls and the centerline of interior demising walls and in fact vary from the dimensions that would be determined by using the description and definition of the "Unit" set forth in the Declaration (which generally only includes the interior airspace between the perimeter walls and excludes interior structural components). For your reference, the area of the Unit, determined in accordance with those defined unit boundaries, is 1,450 square footage. Note that measurements of rooms set forth on this floor plan are generally taken at the greatest points of each given room (as if the room were a perfect rectangle), without regard for any cutouts. Accordingly, the area of the actual room will typically be smaller than the product obtained by multiplying the stated length times width. All dimensions are approximate and may vary with actual construction, and all floor plans and development plans are subject to change.





# Waterfront Collection

Residence

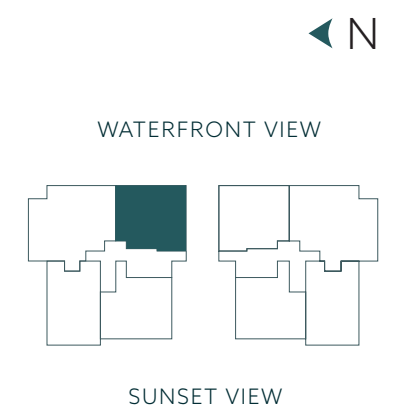
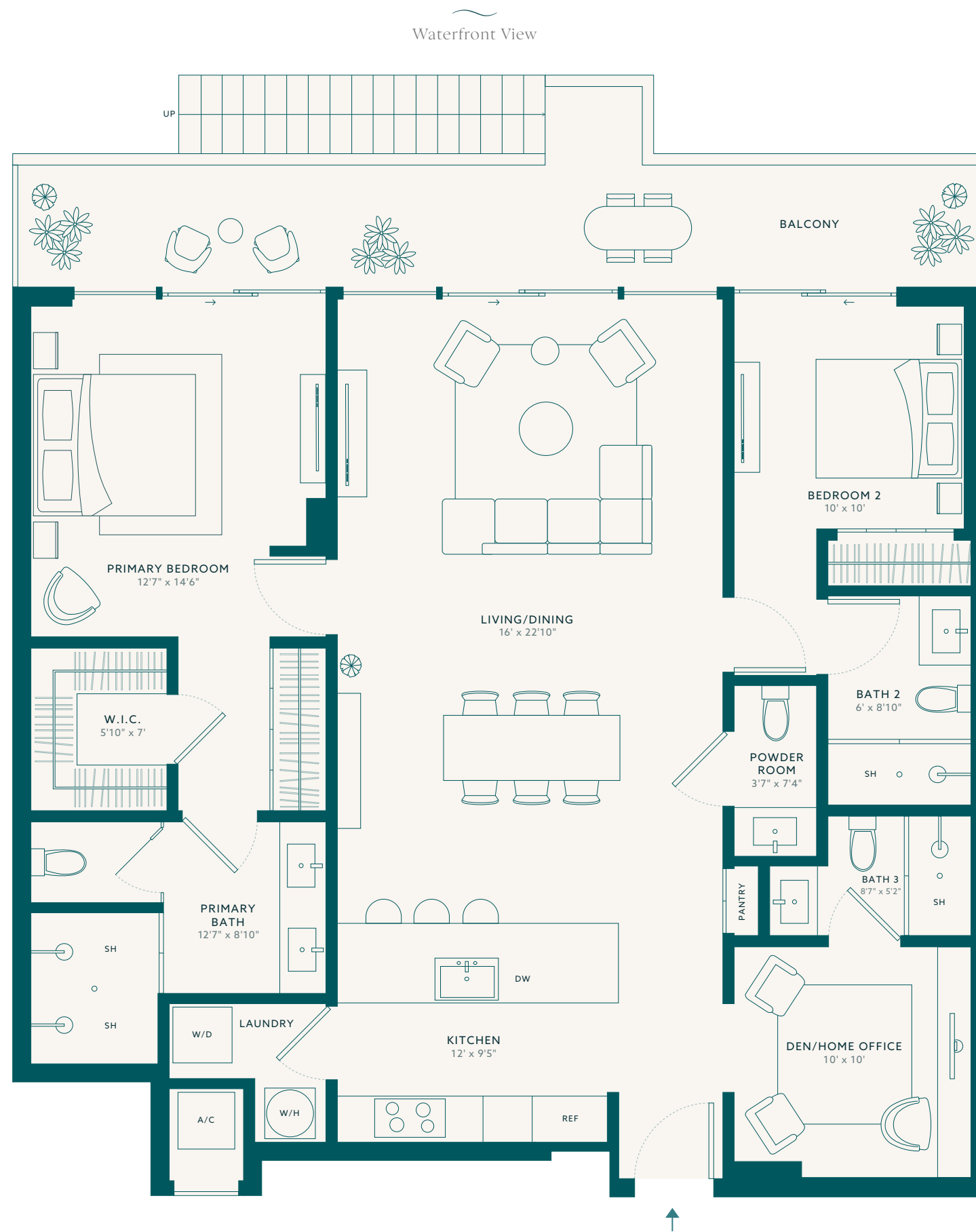
# 207

2 BEDROOMS + DEN  
3.5 BATHROOMS

<b>INTERIOR</b>
1,533 SQ FT ~ 142 SQ M
<b>EXTERIOR</b>
301 SQ FT ~ 28 SQ M
<b>TOTAL</b>
1,834 SQ FT ~ 170 SQ M

# LA BAIA

NORTH



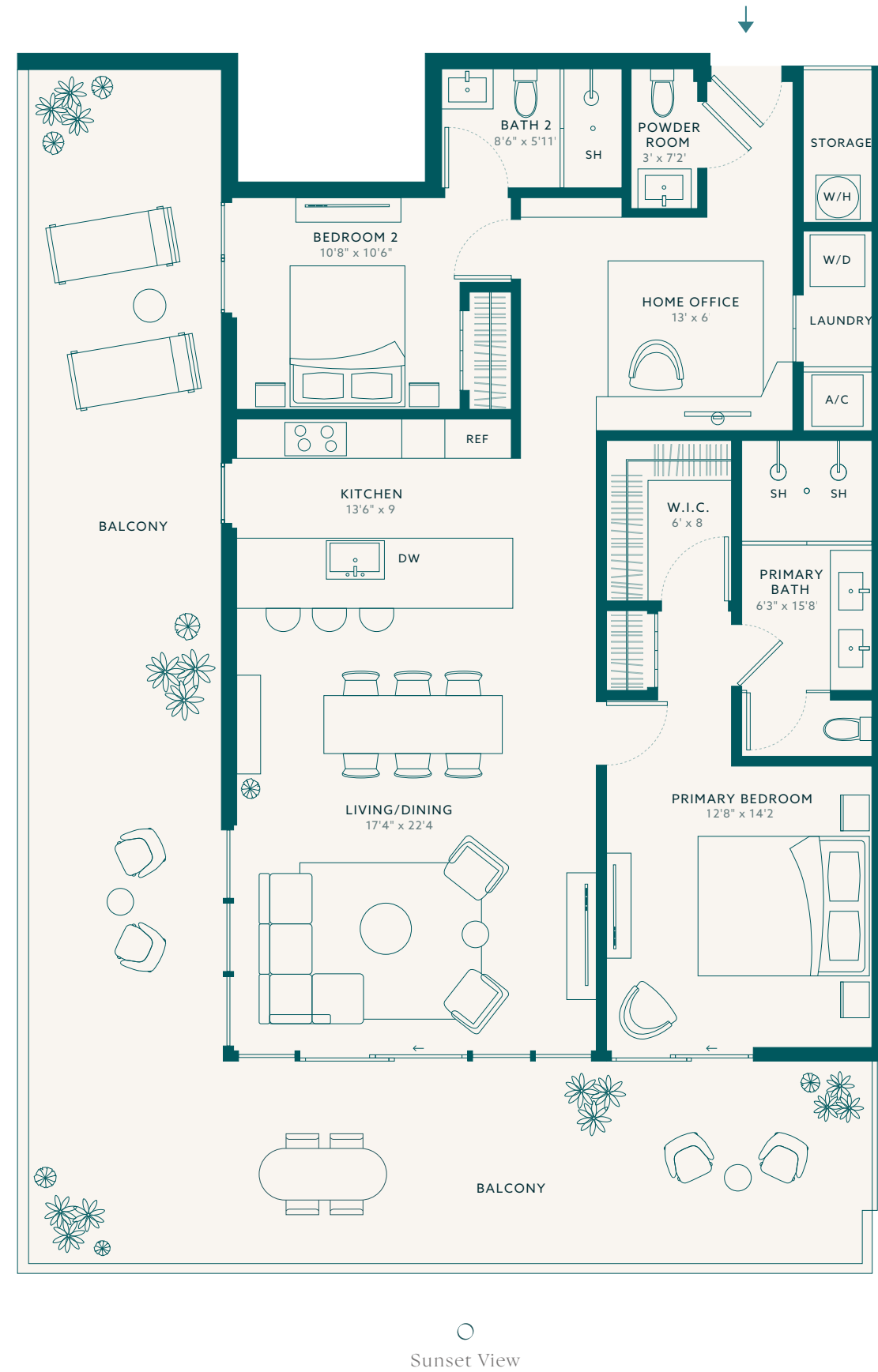
Stated dimensions are measured to the exterior boundaries of the exterior walls and the centerline of interior demising walls and in fact vary from the dimensions that would be determined by using the description and definition of the "Unit" set forth in the Declaration (which generally only includes the interior airspace between the perimeter walls and excludes interior structural components). For your reference, the area of the Unit, determined in accordance with those defined unit boundaries, is 1,533 square footage. Note that measurements of rooms set forth on this floor plan are generally taken at the greatest points of each given room (as if the room were a perfect rectangle), without regard for any cutouts. Accordingly, the area of the actual room will typically be smaller than the product obtained by multiplying the stated length times width. All dimensions are approximate and may vary with actual construction, and all floor plans and development plans are subject to change.



  
Sunset  
Collection

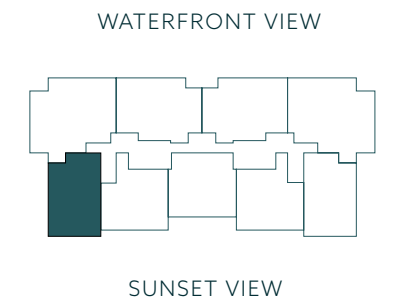
Residence  
**210**

2 BEDROOMS  
2.5 BATHROOMS  
DEN



  
Sunset View

**LA BAIA**  
NORTH



**INTERIOR**  
1,450 SQ FT ~ 135 SQ M

**EXTERIOR**  
1,018 SQ FT ~ 94 SQ M

**TOTAL**  
2,468 SQ FT ~ 229 SQ M

Stated dimensions are measured to the exterior boundaries of the exterior walls and the centerline of interior demising walls and in fact vary from the dimensions that would be determined by using the description and definition of the "Unit" set forth in the Declaration (which generally only includes the interior airspace between the perimeter walls and excludes interior structural components). For your reference, the area of the Unit, determined in accordance with those defined unit boundaries, is 1,450 square footage. Note that measurements of rooms set forth on this floor plan are generally taken at the greatest points of each given room (as if the room were a perfect rectangle), without regard for any cutouts. Accordingly, the area of the actual room will typically be smaller than the product obtained by multiplying the stated length times width. All dimensions are approximate and may vary with actual construction, and all floor plans and development plans are subject to change.





# Waterfront Collection

Residence

# 03

3 BEDROOMS  
4 BATHROOMS  
DEN

### RESIDENCES

403 & 603

### INTERIOR

1,811 SQ FT ~ 168 SQ M

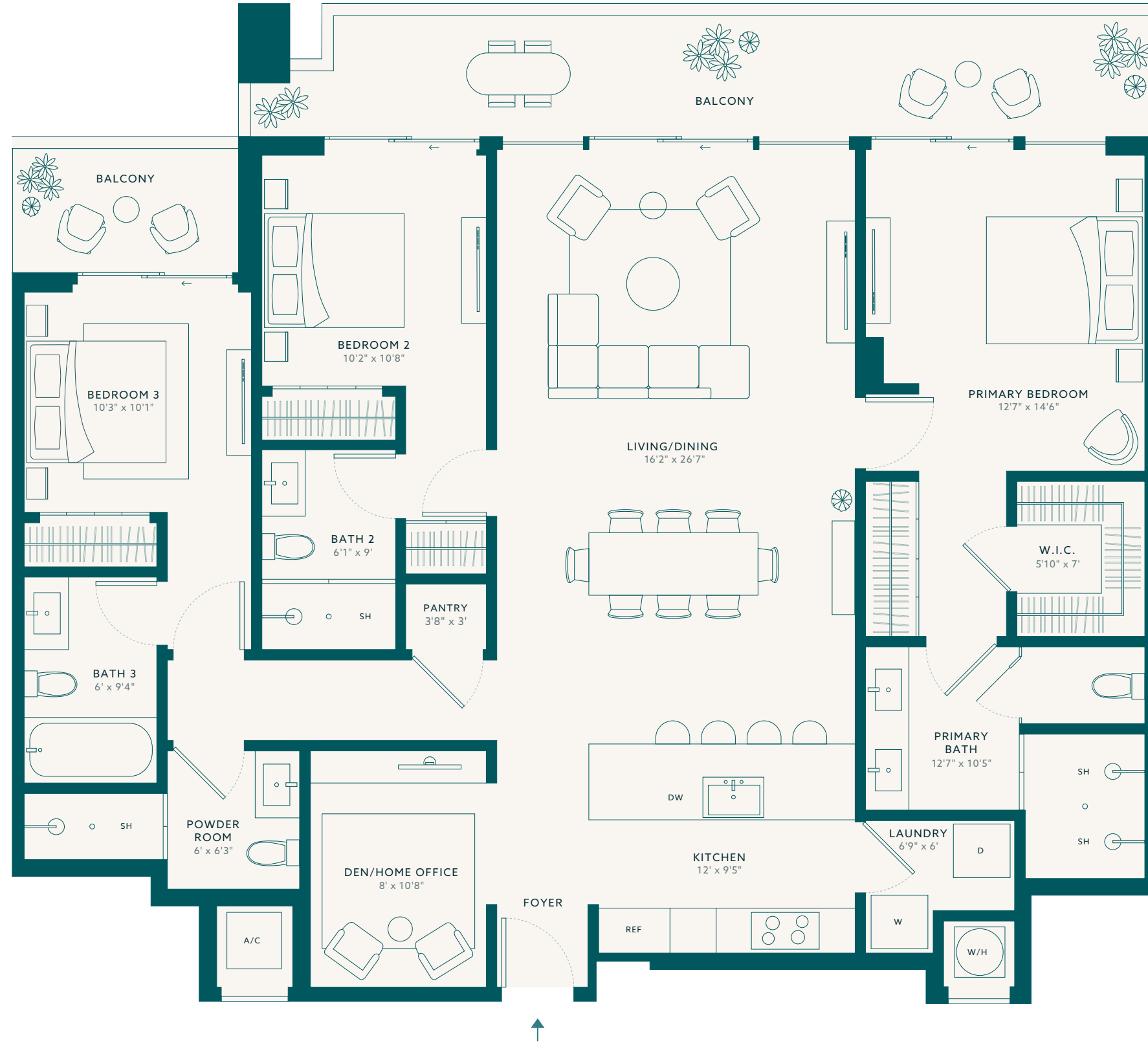
### EXTERIOR

293 SQ FT ~ 27 SQ M

### TOTAL

2,104 SQ FT ~ 195 SQ M

Waterfront View

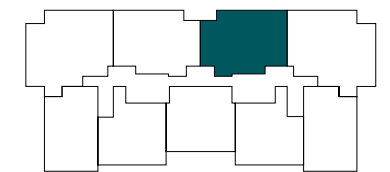


# LA BAIA

NORTH



WATERFRONT VIEW



SUNSET/CITY VIEW

Stated dimensions are measured to the exterior boundaries of the exterior walls and the centerline of interior demising walls and in fact vary from the dimensions that would be determined by using the description and definition of the "Unit" set forth in the Declaration (which generally only includes the interior airspace between the perimeter walls and excludes interior structural components). For your reference, the area of the Unit, determined in accordance with those defined unit boundaries, is 1,811 square footage. Note that measurements of rooms set forth on this floor plan are generally taken at the greatest points of each given room (as if the room were a perfect rectangle), without regard for any cutouts. Accordingly, the area of the actual room will typically be smaller than the product obtained by multiplying the stated length times width. All dimensions are approximate and may vary with actual construction, and all floor plans and development plans are subject to change.



  
Sunset  
Collection

Upper Penthouse  
Residence

10

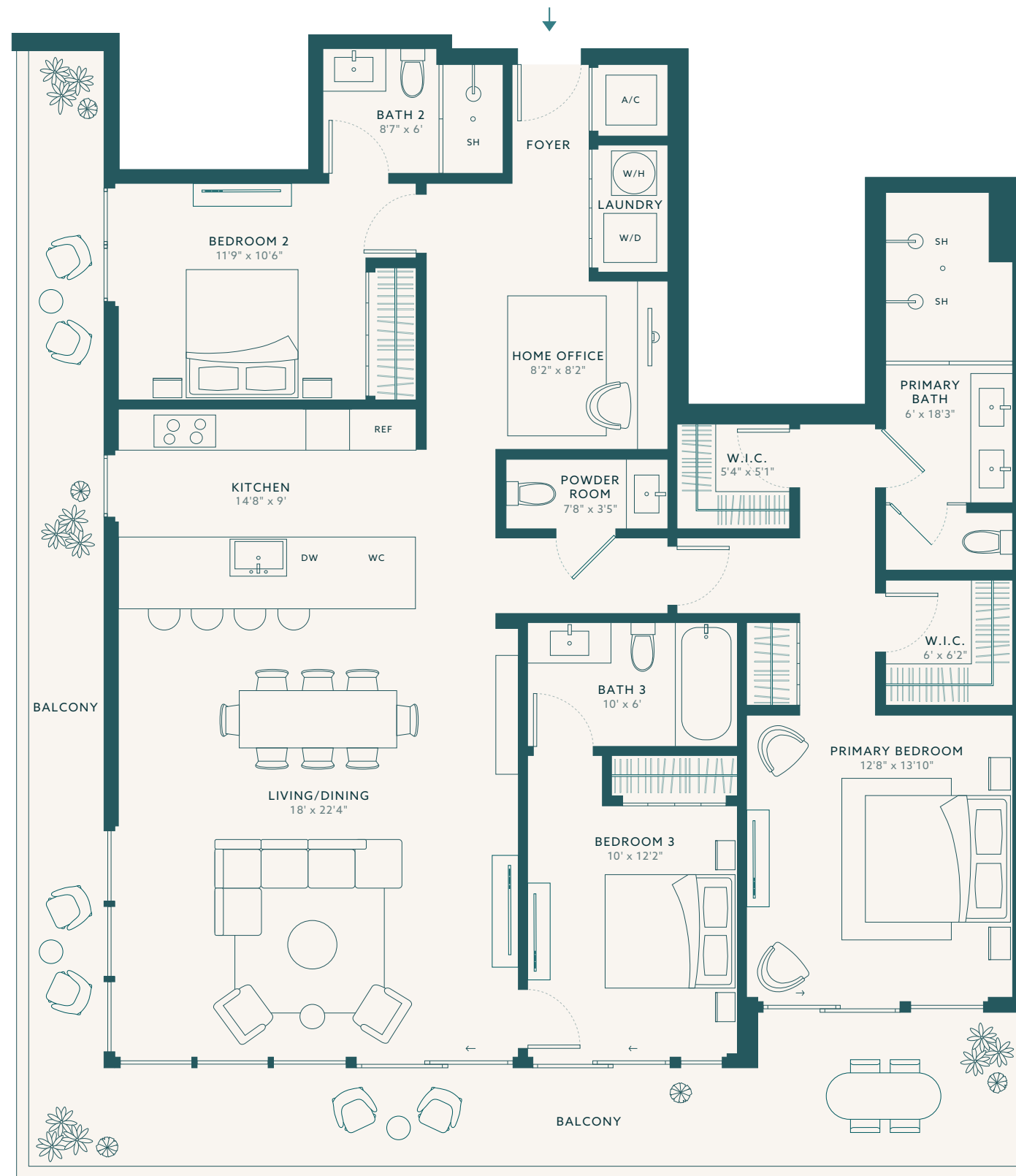
Level 8

3 BEDROOMS  
3.5 BATHROOMS  
DEN

**INTERIOR**  
1,834 SQ FT ~ 170 SQ M

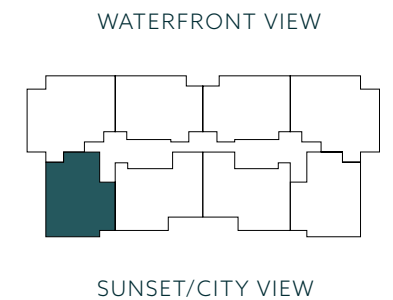
**EXTERIOR**  
540 SQ FT ~ 50 SQ M

**TOTAL**  
2,374 SQ FT ~ 220 SQ M



  
Sunset View

LA BAIA  
NORTH



Stated dimensions are measured to the exterior boundaries of the exterior walls and the centerline of interior demising walls and in fact vary from the dimensions that would be determined by using the description and definition of the "Unit" set forth in the Declaration (which generally only includes the interior airspace between the perimeter walls and excludes interior structural components). For your reference, the area of the Unit, determined in accordance with those defined unit boundaries, is 1,834 square footage. Note that measurements of rooms set forth on this floor plan are generally taken at the greatest points of each given room (as if the room were a perfect rectangle), without regard for any cutouts. Accordingly, the area of the actual room will typically be smaller than the product obtained by multiplying the stated length times width. All dimensions are approximate and may vary with actual construction, and all floor plans and development plans are subject to change.





# Waterfront Collection

Lower Penthouse Residence

# 01

Level 7

Option A

4 BEDROOMS  
4.5 BATHROOMS

Option B

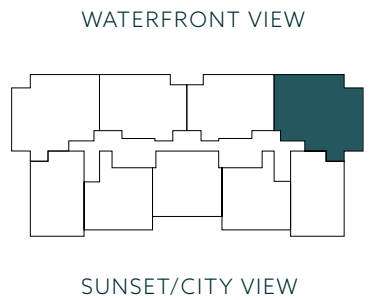
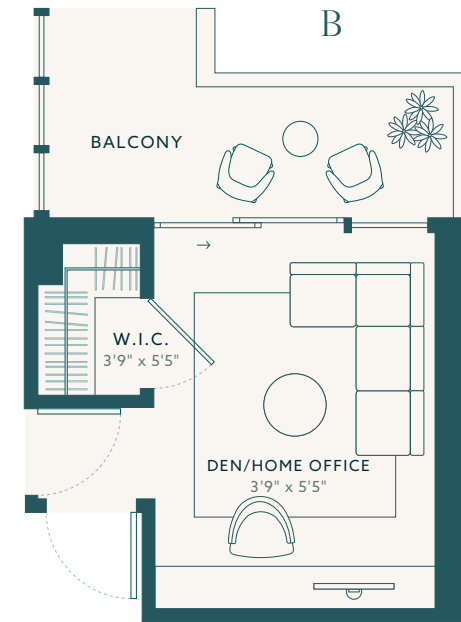
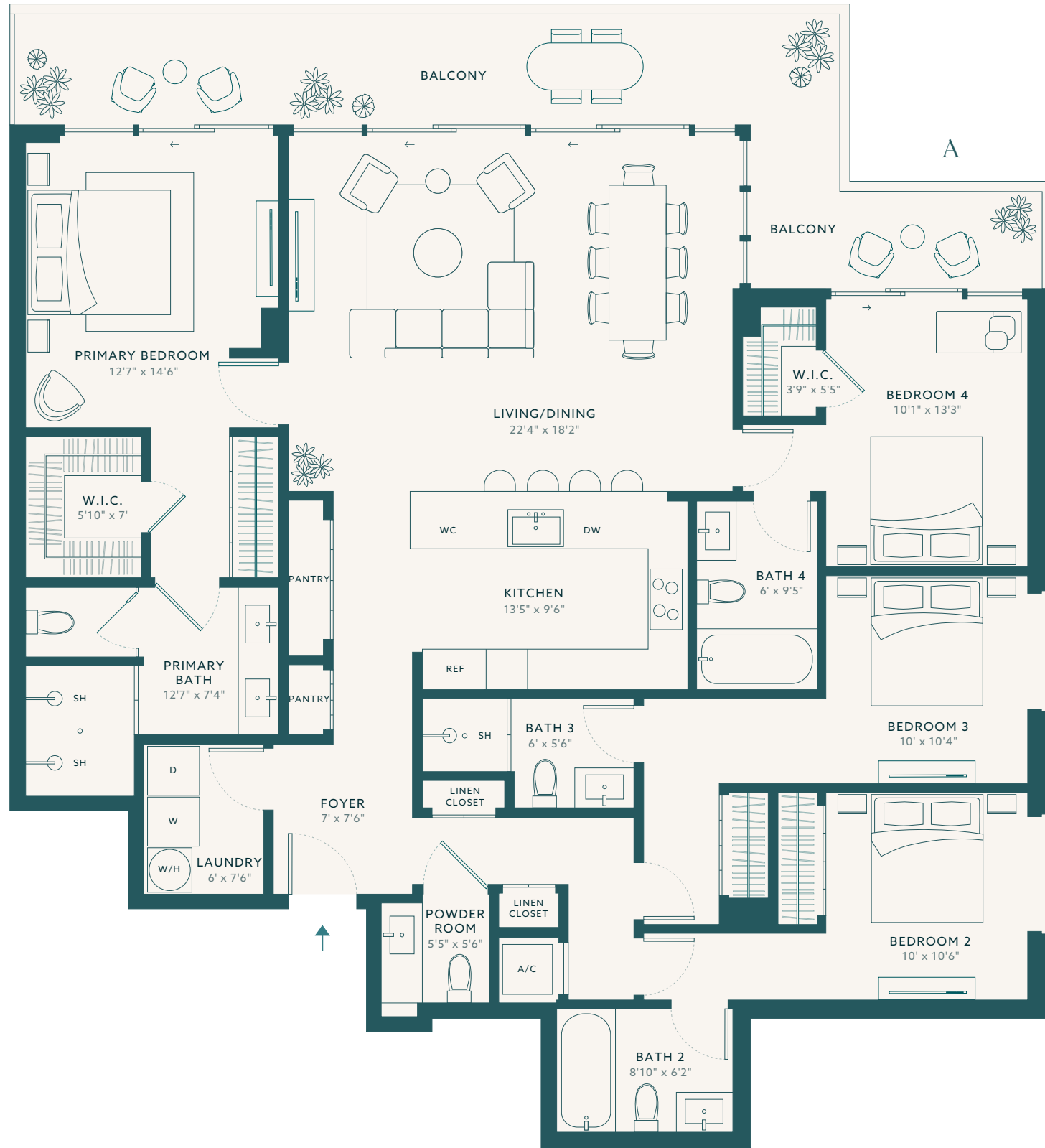
3 BEDROOMS  
4.5 BATHROOMS  
DEN

**INTERIOR**  
2,076 SQ FT ~ 193 SQ M

**EXTERIOR**  
329 SQ FT ~ 30 SQ M

**TOTAL**  
2,405 SQ FT ~ 223 SQ M

Waterfront View



Stated dimensions are measured to the exterior boundaries of the exterior walls and the centerline of interior demising walls and in fact vary from the dimensions that would be determined by using the description and definition of the "Unit" set forth in the Declaration (which generally only includes the interior airspace between the perimeter walls and excludes interior structural components). For your reference, the area of the Unit, determined in accordance with those defined unit boundaries, is 2,076 square footage. Note that measurements of rooms set forth on this floor plan are generally taken at the greatest points of each given room (as if the room were a perfect rectangle), without regard for any cutouts. Accordingly, the area of the actual room will typically be smaller than the product obtained by multiplying the stated length times width. All dimensions are approximate and may vary with actual construction, and all floor plans and development plans are subject to change.







# Waterfront Collection

Residence

# 09

Option A

4 BEDROOMS  
4.5 BATHROOMS

Option B

3 BEDROOMS  
4.5 BATHROOMS  
DEN

### RESIDENCES

309, 409, 509 & 609

### INTERIOR

2,111 SQ FT ~ 196 SQ M

### EXTERIOR

321 SQ FT ~ 29 SQ M

### TOTAL

2,432 SQ FT ~ 225 SQ M

Waterfront View

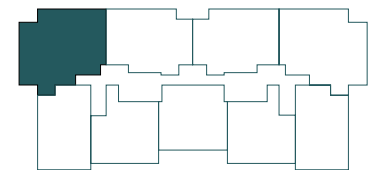


# LA BAIA

NORTH



WATERFRONT VIEW



SUNSET/CITY VIEW

Stated dimensions are measured to the exterior boundaries of the exterior walls and the centerline of interior demising walls and in fact vary from the dimensions that would be determined by using the description and definition of the "Unit" set forth in the Declaration (which generally only includes the interior airspace between the perimeter walls and excludes interior structural components). For your reference, the area of the Unit, determined in accordance with those defined unit boundaries, is 2,111 square footage. Note that measurements of rooms set forth on this floor plan are generally taken at the greatest points of each given room (as if the room were a perfect rectangle), without regard for any cutouts. Accordingly, the area of the actual room will typically be smaller than the product obtained by multiplying the stated length times width. All dimensions are approximate and may vary with actual construction, and all floor plans and development plans are subject to change.

