

O R I G I N

RESIDENCES • BAY HARBOR

by artefacto



RESIDENCES

A collection of
2, 3 and 4 bedroom
residences

ORAL REPRESENTATIONS CANNOT BE RELIED UPON AS CORRECTLY STATING REPRESENTATIONS OF THE DEVELOPER. FOR CORRECT REPRESENTATIONS, MAKE REFERENCE TO THIS BROCHURE AND TO THE DOCUMENTS REQUIRED BY SECTION 718.503, FLORIDA STATUTES, TO BE FURNISHED BY A DEVELOPER TO A BUYER OR LESSEE.

2 BEDROOM COLLECTION

PH LEVEL 7

UNIT 702

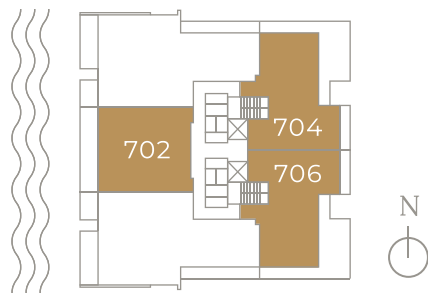
2 Bedrooms + Den / 3.5 Bath
1,582 sq. ft. / 147 m²

UNIT 704

2 Bedrooms + Den / 3.5 Bath
1,563 sq. ft. / 145 m²

UNIT 706

2 Bedrooms + Den / 3.5 Bath
1,563 sq. ft. / 145 m²



LEVEL 6

UNIT 602

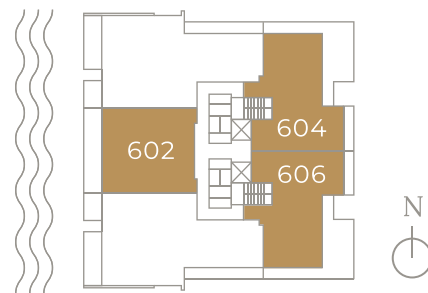
2 Bedrooms + Den / 3.5 Bath
1,582 sq. ft. / 147 m²

UNIT 604

2 Bedrooms + Den / 3.5 Bath
1,659 sq.ft / 154 m²

UNIT 606

2 Bedrooms + Den / 3.5 Bath
1,659 sq.ft / 154 m²



LEVEL 5

UNIT 504

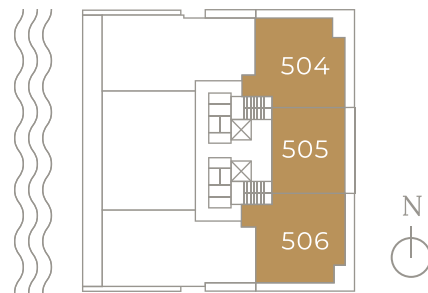
2 Bedrooms / 2.5 Bath
1,367 sq. ft. / 127 m²

UNIT 505

2 Bedrooms + Den / 3.5 Bath
1,302 sq. ft. / 120 m²

UNIT 506

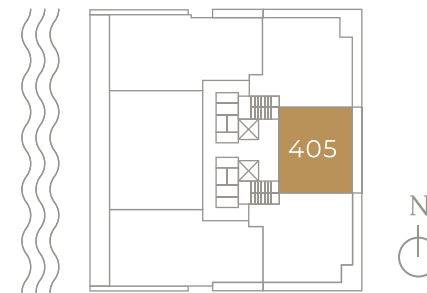
2 Bedrooms / 2.5 Bath
1,367 sq. ft. / 127 m²



LEVEL 4

UNIT 405

2 Bedrooms + Den / 3.5 Bath
1,302 sq. ft. / 120 m²



All improvements are proposed. All square footages and square meters are approximate and subject to change. Balconies are not part of the proposed units, but are proposed as limited common elements of the unit from which they are directly and exclusively accessible. There are various methods for measuring the dimensions of a unit and depending on the method used, the measurements and resulting square footage and square meters of a unit in advertising materials may vary from the measurements, square footage and square meters of a unit as stated or described in the prospectus and the declaration for the Condominium. Stated unit square footages, square meters and dimensions are measured to the exterior boundaries of the exterior walls and the centerline of interior demising walls, including structural walls and other interior structural components of the building, and in fact vary from the square footages, square meters and dimensions that would be determined by using the description and definition of the "Unit" set forth in the prospectus and Declaration (which generally only includes the interior airspace between the perimeter walls and excludes all interior structural components and common elements within the perimeter walls of the Unit).

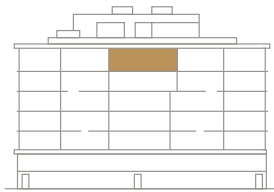
PH LEVEL 7

UNIT 702

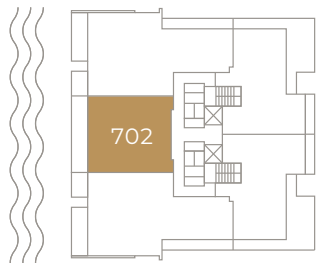
2 Bedrooms + Den / 3.5 Bath

AREA

Unit:
1,582 sq. ft. / 147 m²
Balcony:
301 sq. ft. / 27 m²
TOTAL:
1,883 sq. ft. / 174 m²



WEST FACADE



Plans are not to scale. All improvements, facilities, features and amenities are proposed only, preliminary and subject to change. The configuration, use of space and floor plan design are proposed and subject to change. All dimensions, square footages and square meters are approximate and subject to change. Balconies are not part of the proposed unit, but are proposed as limited common elements of the unit from which they are directly and exclusively accessible. Depictions of furnishings, fixtures and appliances are conceptual, for illustration purposes only and are not necessarily included in the units. Consult your purchase agreement for items included with your unit. No guarantees or representations are made that any improvement, facilities, features or amenities described or depicted will be provided or built, or, if provided or built, will be of the same type or nature described. There are various methods for measuring the dimensions of a unit and depending on the method used, the measurements and resulting square footage and square meters of a unit in advertising materials may vary from the measurements, square footage and square meters of a unit as stated or described in the prospectus and the declaration for the Condominium. Stated unit square footages, square meters and dimensions are measured to the exterior boundaries of the exterior walls and the centerline of interior demising walls, including structural walls and other interior structural components of the building, and in fact vary from the square footages, square meters and dimensions that would be determined by using the description and definition of the "Unit" set forth in the prospectus and Declaration (which generally only includes the interior airspace between the perimeter walls and excludes all interior structural components and common elements within the perimeter walls of the Unit).

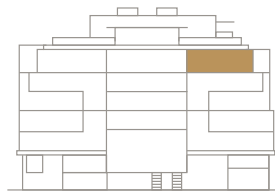
PH LEVEL 7

UNIT 704

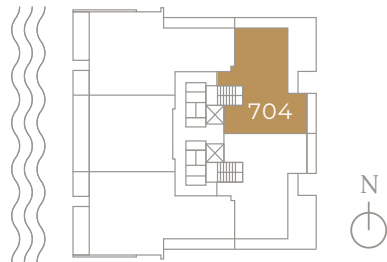
2 Bedrooms + Den / 3.5 Bath

AREA

Unit:
1,563 sq. ft. / 145 m²
Balcony:
376 sq. ft. / 34 m²
TOTAL: 1,939 sq. ft. / 180 m²



EAST FACADE



Plans are not to scale. All improvements, facilities, features and amenities are proposed only, preliminary and subject to change. The configuration, use of space and floor plan design are proposed and subject to change. All dimensions, square footages and square meters are approximate and subject to change. Balconies are not part of the proposed unit, but are proposed as limited common elements of the unit from which they are directly and exclusively accessible. Depictions of furnishings, fixtures and appliances are conceptual, for illustration purposes only and are not necessarily included in the units. Consult your purchase agreement for items included with your unit. No guarantees or representations are made that any improvement, facilities, features or amenities described or depicted will be provided or built, or, if provided or built, will be of the same type or nature described. There are various methods for measuring the dimensions of a unit and depending on the method used, the measurements and resulting square footage and square meters of a unit in advertising materials may vary from the measurements, square footage and square meters of a unit as stated or described in the prospectus and the declaration for the Condominium. Stated unit square footages, square meters and dimensions are measured to the exterior boundaries of the exterior walls and the centerline of interior demising walls, including structural walls and other interior structural components of the building, and in fact vary from the square footages, square meters and dimensions that would be determined by using the description and definition of the "Unit" set forth in the prospectus and Declaration (which generally only includes the interior airspace between the perimeter walls and excludes all interior structural components and common elements within the perimeter walls of the Unit).

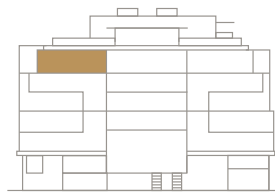
PH LEVEL 7

UNIT 706

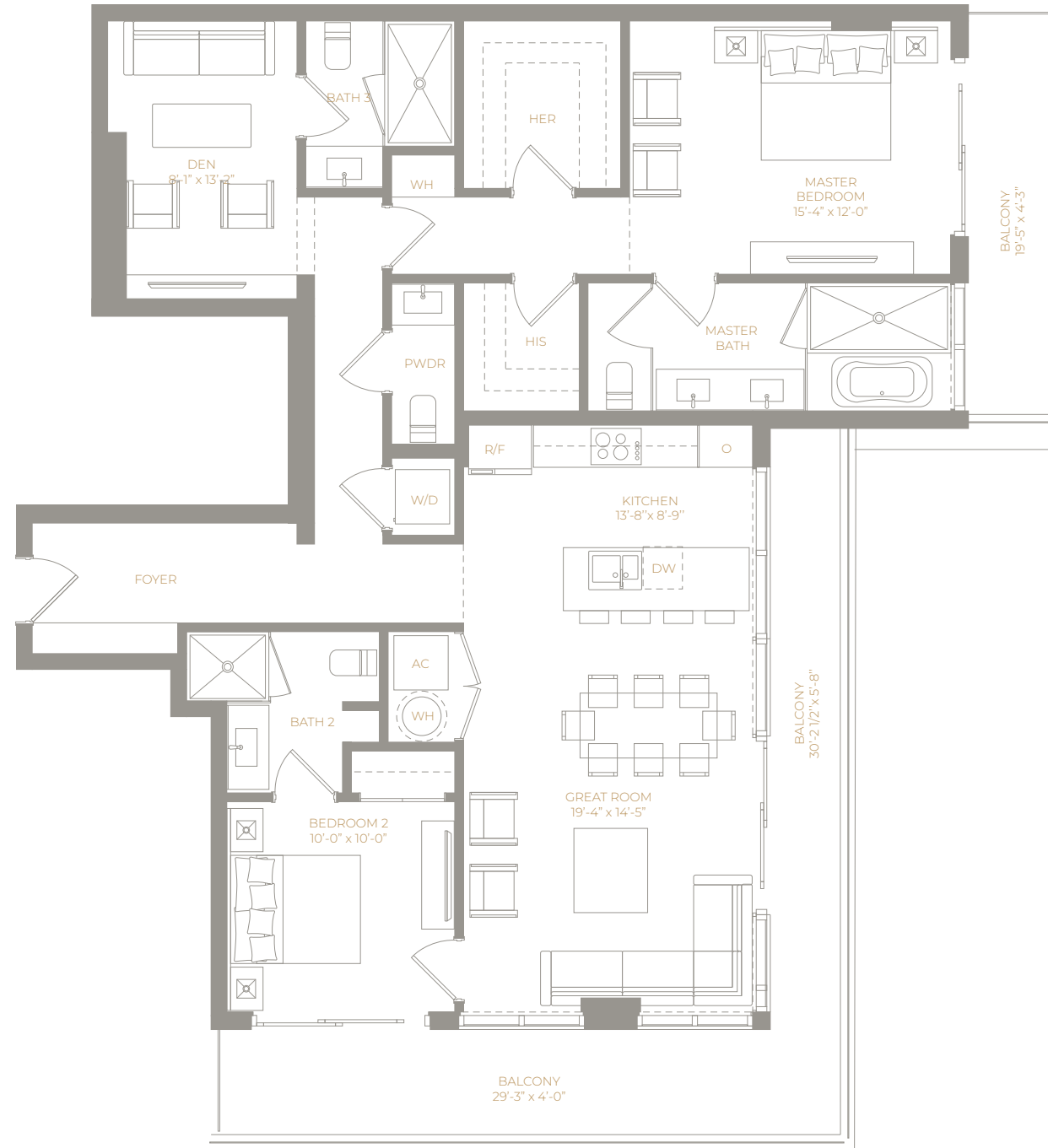
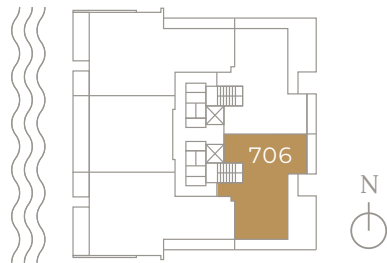
2 Bedrooms + Den / 3.5 Bath

AREA

Unit:
1,563 sq. ft. / 145 m²
Balcony:
376 sq. ft. / 34 m²
TOTAL: 1,939 sq. ft. / 180 m²



EAST FACADE



Plans are not to scale. All improvements, facilities, features and amenities are proposed only, preliminary and subject to change. The configuration, use of space and floor plan design are proposed and subject to change. All dimensions, square footages and square meters are approximate and subject to change. Balconies are not part of the proposed unit, but are proposed as limited common elements of the unit from which they are directly and exclusively accessible. Depictions of furnishings, fixtures and appliances are conceptual, for illustration purposes only and are not necessarily included in the units. Consult your purchase agreement for items included with your unit. No guarantees or representations are made that any improvement, facilities, features or amenities described or depicted will be provided or built, or, if provided or built, will be of the same type or nature described. There are various methods for measuring the dimensions of a unit and depending on the method used, the measurements and resulting square footage and square meters of a unit in advertising materials may vary from the measurements, square footage and square meters of a unit as stated or described in the prospectus and the declaration for the Condominium. Stated unit square footages, square meters and dimensions are measured to the exterior boundaries of the exterior walls and the centerline of interior demising walls, including structural walls and other interior structural components of the building, and in fact vary from the square footages, square meters and dimensions that would be determined by using the description and definition of the "Unit" set forth in the prospectus and Declaration (which generally only includes the interior airspace between the perimeter walls and excludes all interior structural components and common elements within the perimeter walls of the Unit).

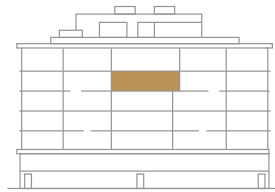
LEVEL 6

UNIT 602

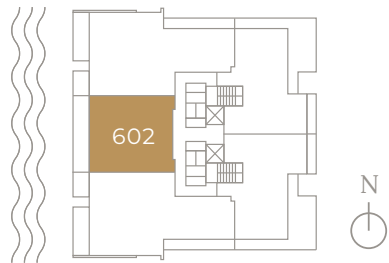
2 Bedrooms + Den / 3.5 Bath

AREA

Unit:
1,582 sq. ft. / 147 m²
Balcony:
301 sq. ft. / 28 m²
TOTAL:
1,883 sq. ft. / 175 m²



WEST FACADE



Plans are not to scale. All improvements, facilities, features and amenities are proposed only, preliminary and subject to change. The configuration, use of space and floor plan design are proposed and subject to change. All dimensions, square footages and square meters are approximate and subject to change. Balconies are not part of the proposed unit, but are proposed as limited common elements of the unit from which they are directly and exclusively accessible. Depictions of furnishings, fixtures and appliances are conceptual, for illustration purposes only and are not necessarily included in the units. Consult your purchase agreement for items included with your unit. No guarantees or representations are made that any improvement, facilities, features or amenities described or depicted will be provided or built, or, if provided or built, will be of the same type or nature described. There are various methods for measuring the dimensions of a unit and depending on the method used, the measurements and resulting square footage and square meters of a unit in advertising materials may vary from the measurements, square footage and square meters of a unit as stated or described in the prospectus and the declaration for the Condominium. Stated unit square footages, square meters and dimensions are measured to the exterior boundaries of the exterior walls and the centerline of interior demising walls, including structural walls and other interior structural components of the building, and in fact vary from the square footages, square meters and dimensions that would be determined by using the description and definition of the "Unit" set forth in the prospectus and Declaration (which generally only includes the interior airspace between the perimeter walls and excludes all interior structural components and common elements within the perimeter walls of the Unit).

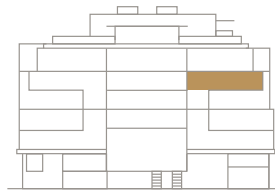
LEVEL 6

UNIT 604

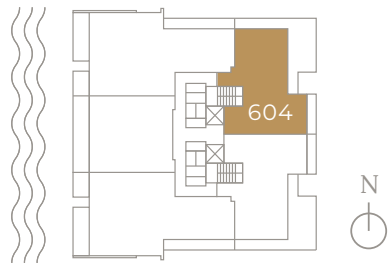
2 Bedrooms + Den / 3.5 Bath

AREA

Unit:
1,659 sq. ft. / 154 m²
Balcony:
652 sq. ft. / 60 m²
TOTAL:
2,311 sq. ft. / 214 m²



EAST FACADE



Plans are not to scale. All improvements, facilities, features and amenities are proposed only, preliminary and subject to change. The configuration, use of space and floor plan design are proposed and subject to change. All dimensions, square footages and square meters are approximate and subject to change. Balconies are not part of the proposed unit, but are proposed as limited common elements of the unit from which they are directly and exclusively accessible. Depictions of furnishings, fixtures and appliances are conceptual, for illustration purposes only and are not necessarily included in the units. Consult your purchase agreement for items included with your unit. No guarantees or representations are made that any improvement, facilities, features or amenities described or depicted will be provided or built, or, if provided or built, will be of the same type or nature described. There are various methods for measuring the dimensions of a unit and depending on the method used, the measurements and resulting square footage and square meters of a unit in advertising materials may vary from the measurements, square footage and square meters of a unit as stated or described in the prospectus and the declaration for the Condominium. Stated unit square footages, square meters and dimensions are measured to the exterior boundaries of the exterior walls and the centerline of interior demising walls, including structural walls and other interior structural components of the building, and in fact vary from the square footages, square meters and dimensions that would be determined by using the description and definition of the "Unit" set forth in the prospectus and Declaration (which generally only includes the interior airspace between the perimeter walls and excludes all interior structural components and common elements within the perimeter walls of the Unit).

LEVEL 6

UNIT 606

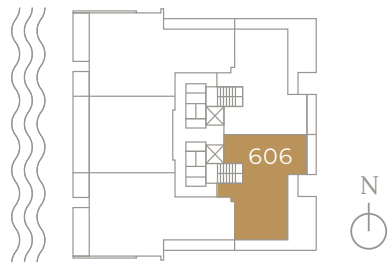
2 Bedrooms + Den / 3.5 Bath

AREA

Unit:
1,659 sq. ft. / 154 m²
Balcony:
652 sq. ft. / 60 m²
TOTAL:
2,311 sq. ft. / 214 m²



EAST FACADE



Plans are not to scale. All improvements, facilities, features and amenities are proposed only, preliminary and subject to change. The configuration, use of space and floor plan design are proposed and subject to change. All dimensions, square footages and square meters are approximate and subject to change. Balconies are not part of the proposed unit, but are proposed as limited common elements of the unit from which they are directly and exclusively accessible. Depictions of furnishings, fixtures and appliances are conceptual, for illustration purposes only and are not necessarily included in the units. Consult your purchase agreement for items included with your unit. No guarantees or representations are made that any improvement, facilities, features or amenities described or depicted will be provided or built, or, if provided or built, will be of the same type or nature described. There are various methods for measuring the dimensions of a unit and depending on the method used, the measurements and resulting square footage and square meters of a unit in advertising materials may vary from the measurements, square footage and square meters of a unit as stated or described in the prospectus and the declaration for the Condominium. Stated unit square footages, square meters and dimensions are measured to the exterior boundaries of the exterior walls and the centerline of interior demising walls, including structural walls and other interior structural components of the building, and in fact vary from the square footages, square meters and dimensions that would be determined by using the description and definition of the "Unit" set forth in the prospectus and Declaration (which generally only includes the interior airspace between the perimeter walls and excludes all interior structural components and common elements within the perimeter walls of the Unit).

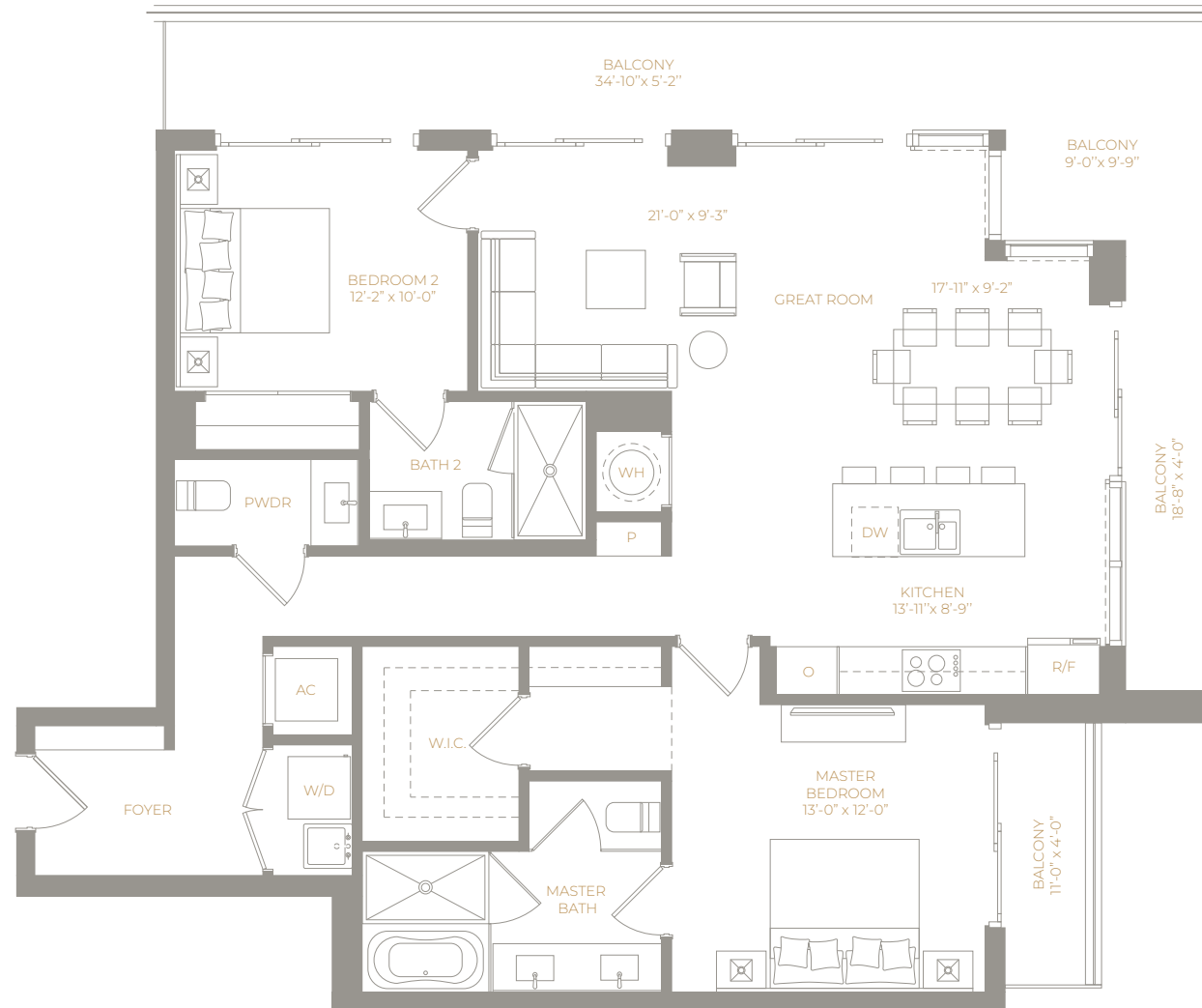
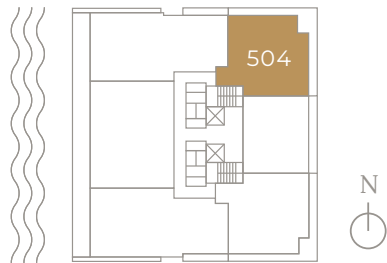
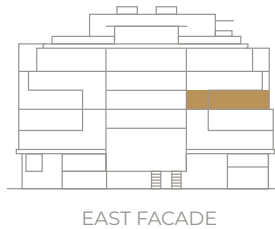
LEVEL 5

UNIT 504

2 Bedrooms / 2.5 Bath

AREA

Unit:
1,367 sq. ft. / 127 m²
Balcony:
386 sq. ft. / 35 m²
TOTAL:
1,753 sq. ft. / 162 m²



Plans are not to scale. All improvements, facilities, features and amenities are proposed only, preliminary and subject to change. The configuration, use of space and floor plan design are proposed and subject to change. All dimensions, square footages and square meters are approximate and subject to change. Balconies are not part of the proposed unit, but are proposed as limited common elements of the unit from which they are directly and exclusively accessible. Depictions of furnishings, fixtures and appliances are conceptual, for illustration purposes only and are not necessarily included in the units. Consult your purchase agreement for items included with your unit. No guarantees or representations are made that any improvement, facilities, features or amenities described or depicted will be provided or built, or, if provided or built, will be of the same type or nature described. There are various methods for measuring the dimensions of a unit and depending on the method used, the measurements and resulting square footage and square meters of a unit in advertising materials may vary from the measurements, square footage and square meters of a unit as stated or described in the prospectus and the declaration for the Condominium. Stated unit square footages, square meters and dimensions are measured to the exterior boundaries of the exterior walls and the centerline of interior demising walls, including structural walls and other interior structural components of the building, and in fact vary from the square footages, square meters and dimensions that would be determined by using the description and definition of the "Unit" set forth in the prospectus and Declaration (which generally only includes the interior airspace between the perimeter walls and excludes all interior structural components and common elements within the perimeter walls of the Unit).

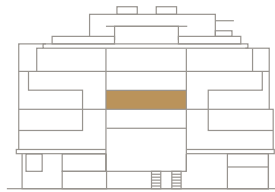
LEVEL 5

UNIT 505

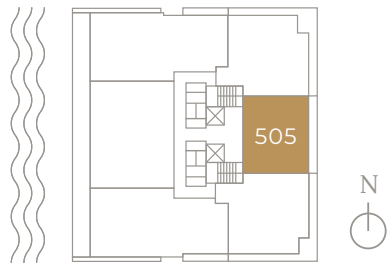
2 Bedrooms + Den / 3.5 Bath

AREA

Unit:
1,302 sq. ft. / 120 m²
Balcony:
135 sq. ft. / 12 m²
TOTAL:
1,437 sq. ft. / 133 m²



EAST FACADE



Plans are not to scale. All improvements, facilities, features and amenities are proposed only, preliminary and subject to change. The configuration, use of space and floor plan design are proposed and subject to change. All dimensions, square footages and square meters are approximate and subject to change. Balconies are not part of the proposed unit, but are proposed as limited common elements of the unit from which they are directly and exclusively accessible. Depictions of furnishings, fixtures and appliances are conceptual, for illustration purposes only and are not necessarily included in the units. Consult your purchase agreement for items included with your unit. No guarantees or representations are made that any improvement, facilities, features or amenities described or depicted will be provided or built, or, if provided or built, will be of the same type or nature described. There are various methods for measuring the dimensions of a unit and depending on the method used, the measurements and resulting square footage and square meters of a unit in advertising materials may vary from the measurements, square footage and square meters of a unit as stated or described in the prospectus and the declaration for the Condominium. Stated unit square footages, square meters and dimensions are measured to the exterior boundaries of the exterior walls and the centerline of interior demising walls, including structural walls and other interior structural components of the building, and in fact vary from the square footages, square meters and dimensions that would be determined by using the description and definition of the "Unit" set forth in the prospectus and Declaration (which generally only includes the interior airspace between the perimeter walls and excludes all interior structural components and common elements within the perimeter walls of the Unit).

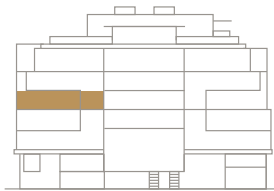
LEVEL 5

UNIT 506

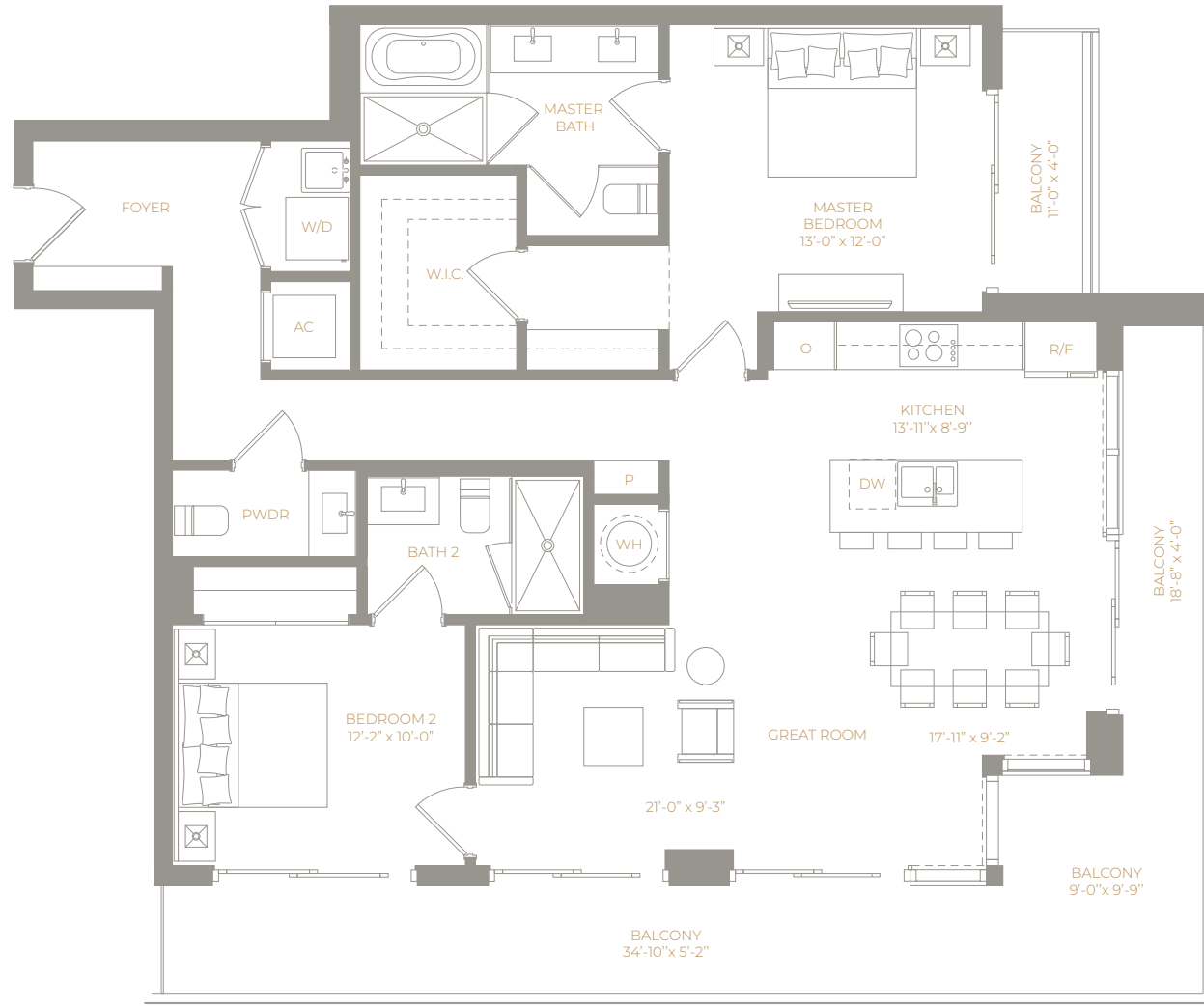
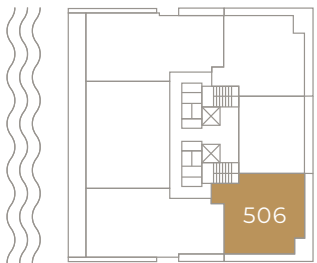
2 Bedrooms / 2.5 Bath

AREA

Unit:
1,367 sq. ft. / 127 m²
Balcony:
386 sq. ft. / 35 m²
TOTAL:
1,753 sq. ft. / 162 m²



EAST FACADE



Plans are not to scale. All improvements, facilities, features and amenities are proposed only, preliminary and subject to change. The configuration, use of space and floor plan design are proposed and subject to change. All dimensions, square footages and square meters are approximate and subject to change. Balconies are not part of the proposed unit, but are proposed as limited common elements of the unit from which they are directly and exclusively accessible. Depictions of furnishings, fixtures and appliances are conceptual, for illustration purposes only and are not necessarily included in the units. Consult your purchase agreement for items included with your unit. No guarantees or representations are made that any improvement, facilities, features or amenities described or depicted will be provided or built, or, if provided or built, will be of the same type or nature described. There are various methods for measuring the dimensions of a unit and depending on the method used, the measurements and resulting square footage and square meters of a unit in advertising materials may vary from the measurements, square footage and square meters of a unit as stated or described in the prospectus and the declaration for the Condominium. Stated unit square footages, square meters and dimensions are measured to the exterior boundaries of the exterior walls and the centerline of interior demising walls, including structural walls and other interior structural components of the building, and in fact vary from the square footages, square meters and dimensions that would be determined by using the description and definition of the "Unit" set forth in the prospectus and Declaration (which generally only includes the interior airspace between the perimeter walls and excludes all interior structural components and common elements within the perimeter walls of the Unit).

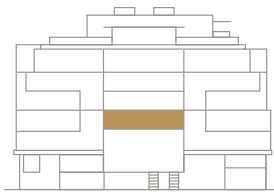
LEVEL 4

UNIT 405

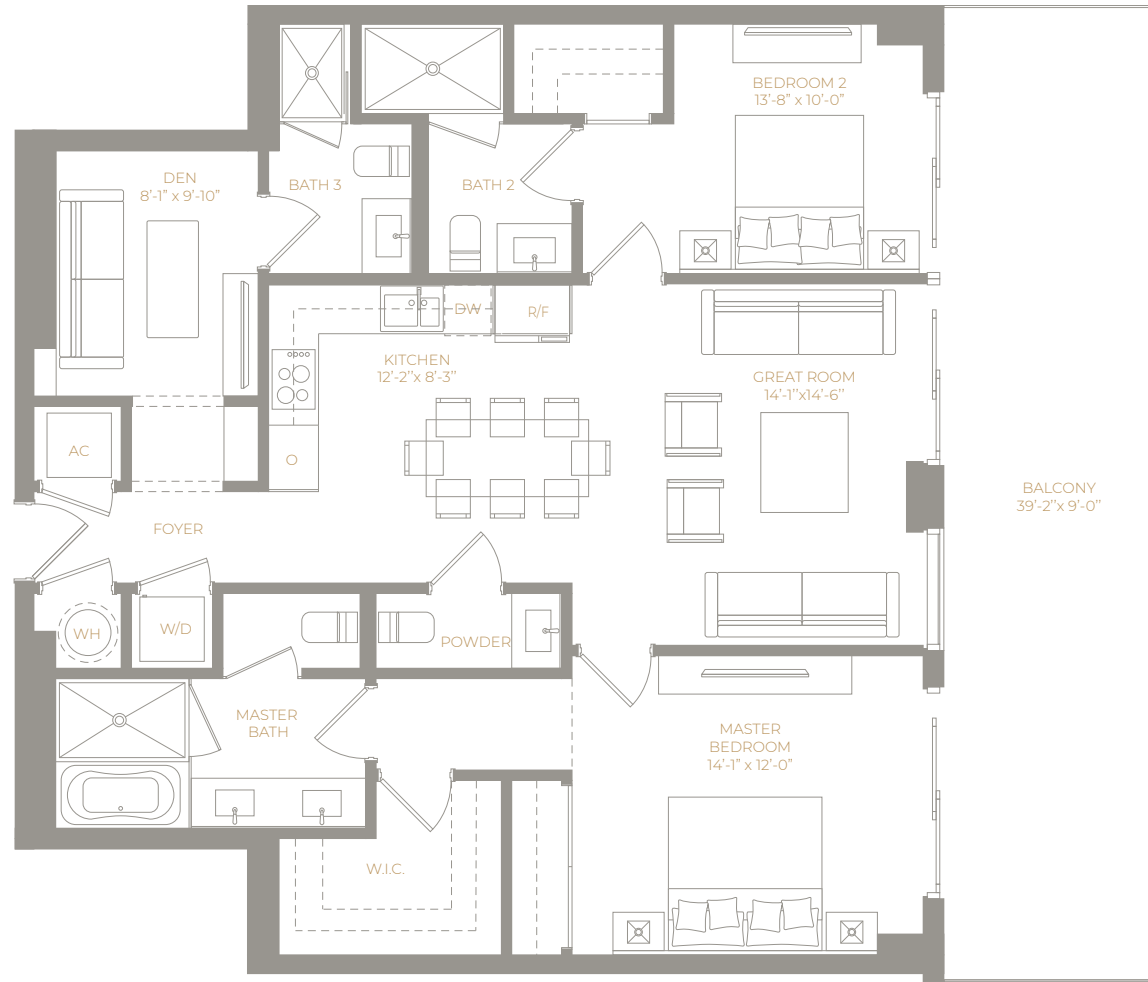
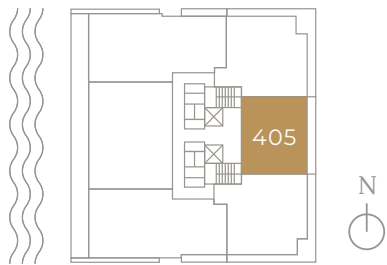
2 Bedrooms + Den / 3.5 Bath

AREA

Unit:
1,302 sq. ft. / 120 m²
Balcony:
364 sq. ft. / 33 m²
TOTAL:
1,666 sq. ft. / 154 m²



EAST FACADE



Plans are not to scale. All improvements, facilities, features and amenities are proposed only, preliminary and subject to change. The configuration, use of space and floor plan design are proposed and subject to change. All dimensions, square footages and square meters are approximate and subject to change. Balconies are not part of the proposed unit, but are proposed as limited common elements of the unit from which they are directly and exclusively accessible. Depictions of furnishings, fixtures and appliances are conceptual, for illustration purposes only and are not necessarily included in the units. Consult your purchase agreement for items included with your unit. No guarantees or representations are made that any improvement, facilities, features or amenities described or depicted will be provided or built, or, if provided or built, will be of the same type or nature described. There are various methods for measuring the dimensions of a unit and depending on the method used, the measurements and resulting square footage and square meters of a unit in advertising materials may vary from the measurements, square footage and square meters of a unit as stated or described in the prospectus and the declaration for the Condominium. Stated unit square footages, square meters and dimensions are measured to the exterior boundaries of the exterior walls and the centerline of interior demising walls, including structural walls and other interior structural components of the building, and in fact vary from the square footages, square meters and dimensions that would be determined by using the description and definition of the "Unit" set forth in the prospectus and Declaration (which generally only includes the interior airspace between the perimeter walls and excludes all interior structural components and common elements within the perimeter walls of the Unit).

3 BEDROOM COLLECTION

LEVEL 5

UNIT 501

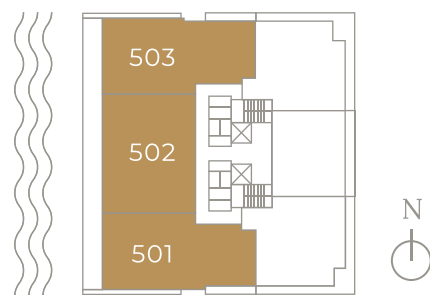
3 Bedrooms + Den / 4 Bath
2,049 sq. ft. / 190 m²

UNIT 502

3 Bedrooms + Den / 4.5 Bath
2,187 sq. ft. / 203 m²

UNIT 503

3 Bedrooms + Den / 4 Bath
2,049 sq. ft. / 190 m²



LEVEL 4

UNIT 402

3 Bedrooms + Den / 4.5 Bath
2,187 sq. ft. / 203 m²

UNIT 404

3 Bedrooms / 3.5 Bath
1,491 sq. ft. / 138 m²

UNIT 406

3 Bedrooms / 3.5 Bath
1,491 sq. ft. / 138 m²



LEVEL 3

UNIT 302

3 Bedrooms + Den / 4.5 Bath
2,187 sq. ft. / 203 m²

UNIT 304

3 Bedrooms / 3.5 Bath
1,549 sq. ft. / 144 m²

UNIT 306

3 Bedrooms / 3.5 Bath
1,549 sq. ft. / 144 m²



All improvements are proposed. All square footages and square meters are approximate and subject to change. Balconies are not part of the proposed units, but are proposed as limited common elements of the unit from which they are directly and exclusively accessible. There are various methods for measuring the dimensions of a unit and depending on the method used, the measurements and resulting square footage and square meters of a unit in advertising materials may vary from the measurements, square footage and square meters of a unit as stated or described in the prospectus and the declaration for the Condominium. Stated unit square footages, square meters and dimensions are measured to the exterior boundaries of the exterior walls and the centerline of interior demising walls, including structural walls and other interior structural components of the building, and in fact vary from the square footages, square meters and dimensions that would be determined by using the description and definition of the "Unit" set forth in the prospectus and Declaration (which generally only includes the interior airspace between the perimeter walls and excludes all interior structural components and common elements within the perimeter walls of the Unit).

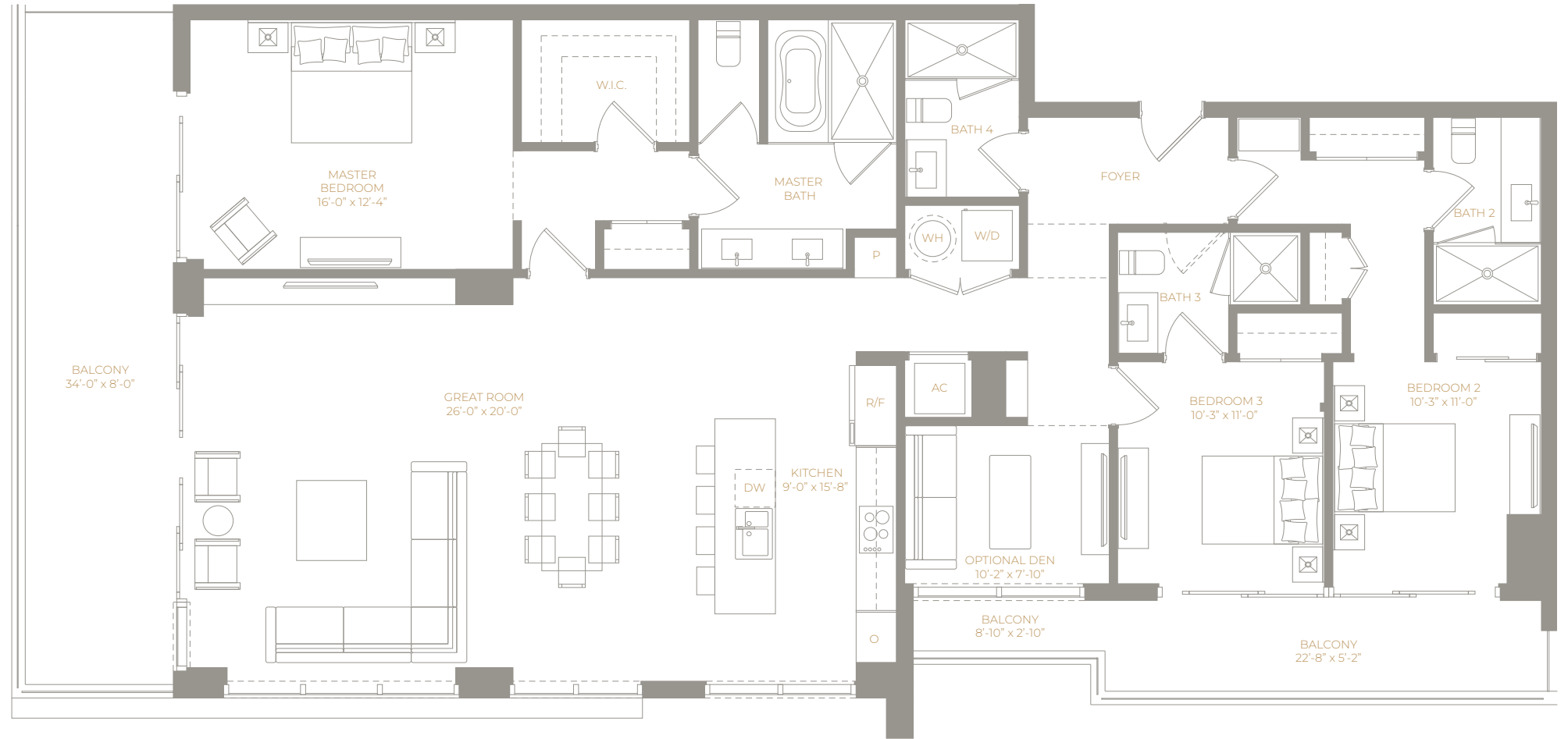
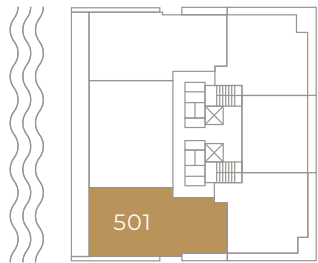
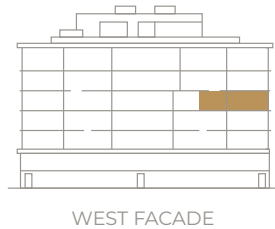
LEVEL 5

UNIT 501

3 Bedrooms + Den / 4 Bath

AREA

Unit:
2,049 sq. ft. / 190 m²
Balcony:
416 sq. ft. / 38 m²
TOTAL:
2,466 sq. ft. / 229 m²



Plans are not to scale. All improvements, facilities, features and amenities are proposed only, preliminary and subject to change. The configuration, use of space and floor plan design are proposed and subject to change. All dimensions, square footages and square meters are approximate and subject to change. Balconies are not part of the proposed unit, but are proposed as limited common elements of the unit from which they are directly and exclusively accessible. Depictions of furnishings, fixtures and appliances are conceptual, for illustration purposes only and are not necessarily included in the units. Consult your purchase agreement for items included with your unit. No guarantees or representations are made that any improvement, facilities, features or amenities described or depicted will be provided or built, or, if provided or built, will be of the same type or nature described. There are various methods for measuring the dimensions of a unit and depending on the method used, the measurements and resulting square footage and square meters of a unit in advertising materials may vary from the measurements, square footage and square meters of a unit as stated or described in the prospectus and the declaration for the Condominium. Stated unit square footages, square meters and dimensions are measured to the exterior boundaries of the exterior walls and the centerline of interior demising walls, including structural walls and other interior structural components of the building, and in fact vary from the square footages, square meters and dimensions that would be determined by using the description and definition of the "Unit" set forth in the prospectus and Declaration (which generally only includes the interior airspace between the perimeter walls and excludes all interior structural components and common elements within the perimeter walls of the Unit).

LEVEL 5

UNIT 502

3 Bedrooms + Den / 4.5 Bath

AREA

Unit:

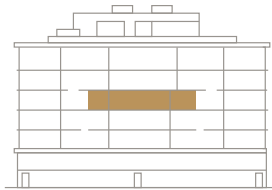
2,187 sq. ft. / 203 m²

Balcony:

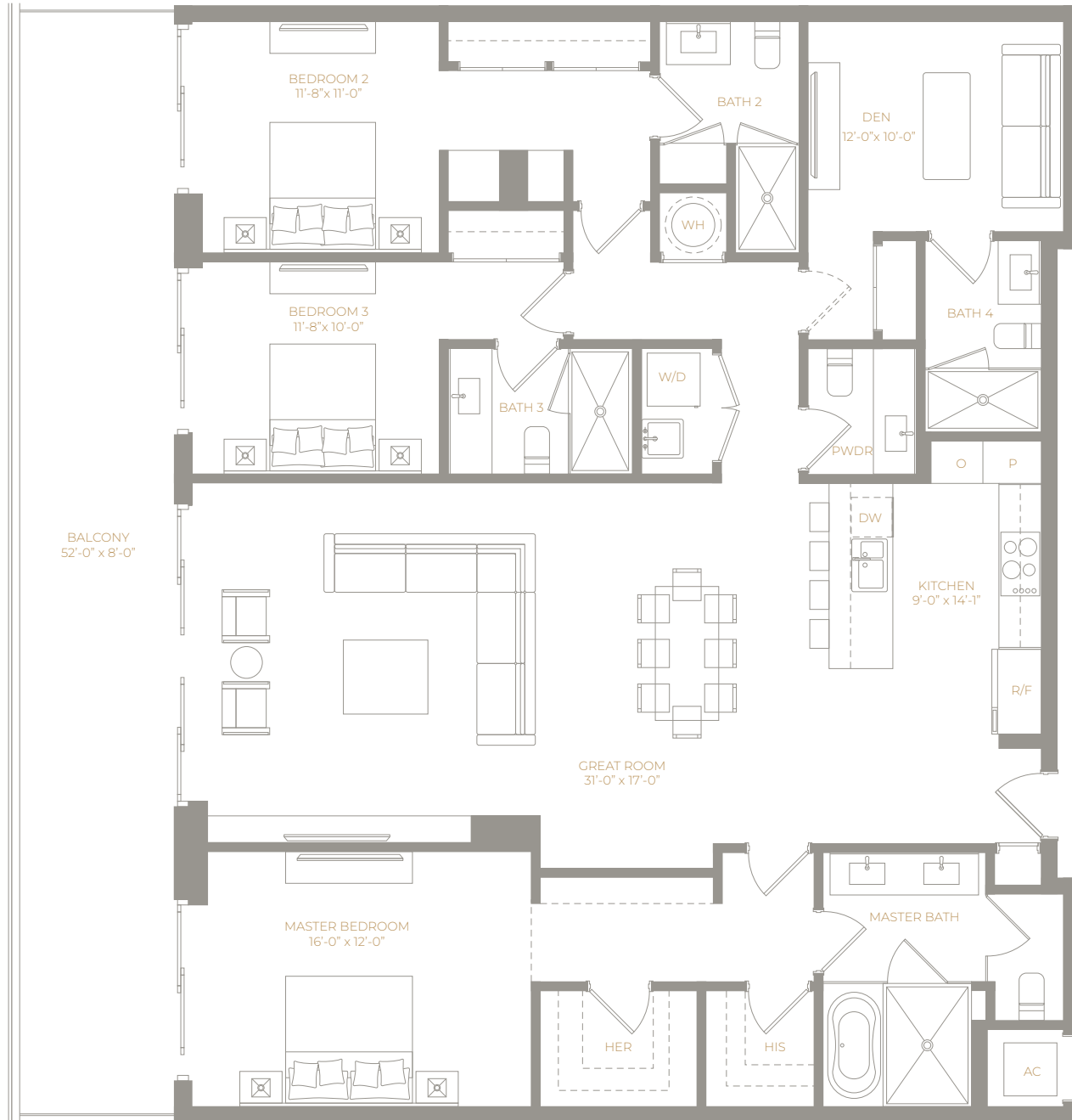
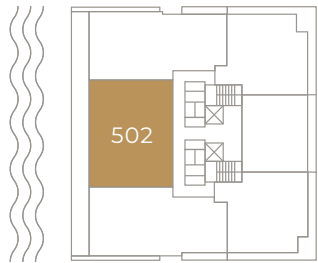
416 sq. ft. / 38 m²

TOTAL:

2,603 sq. ft. / 241 m²



WEST FACADE



Plans are not to scale. All improvements, facilities, features and amenities are proposed only, preliminary and subject to change. The configuration, use of space and floor plan design are proposed and subject to change. All dimensions, square footages and square meters are approximate and subject to change. Balconies are not part of the proposed unit, but are proposed as limited common elements of the unit from which they are directly and exclusively accessible. Depictions of furnishings, fixtures and appliances are conceptual, for illustration purposes only and are not necessarily included in the units. Consult your purchase agreement for items included with your unit. No guarantees or representations are made that any improvement, facilities, features or amenities described or depicted will be provided or built, or, if provided or built, will be of the same type or nature described. There are various methods for measuring the dimensions of a unit and depending on the method used, the measurements and resulting square footage and square meters of a unit in advertising materials may vary from the measurements, square footage and square meters of a unit as stated or described in the prospectus and the declaration for the Condominium. Stated unit square footages, square meters and dimensions are measured to the exterior boundaries of the exterior walls and the centerline of interior demising walls, including structural walls and other interior structural components of the building, and in fact vary from the square footages, square meters and dimensions that would be determined by using the description and definition of the "Unit" set forth in the prospectus and Declaration (which generally only includes the interior airspace between the perimeter walls and excludes all interior structural components and common elements within the perimeter walls of the Unit).

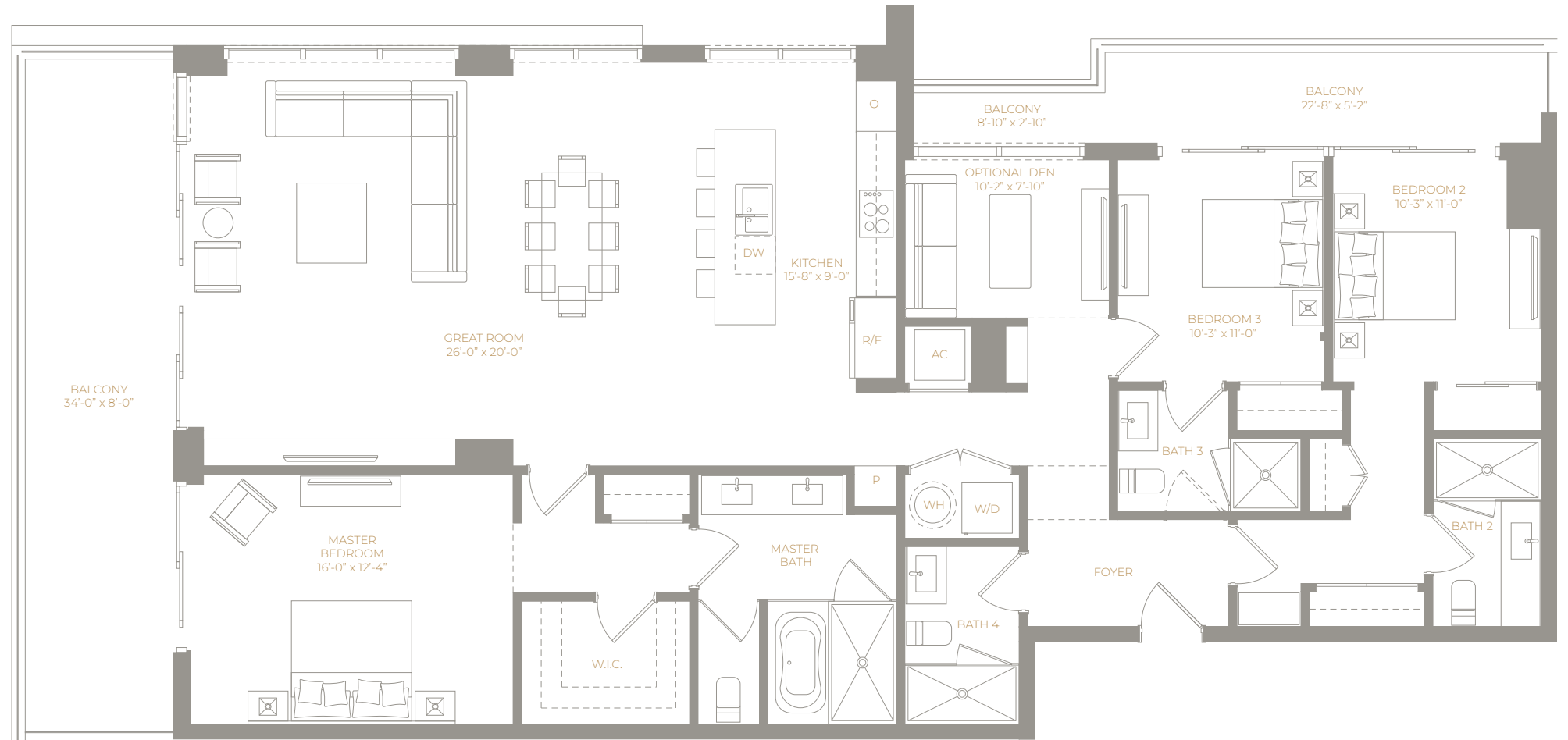
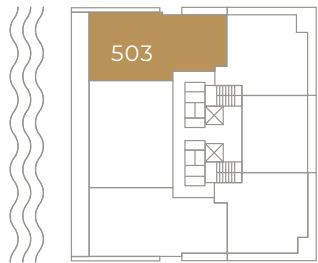
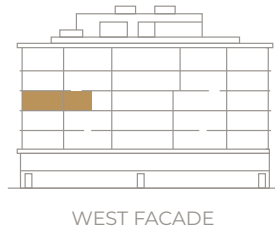
LEVEL 5

UNIT 503

3 Bedrooms + Den / 4 Bath

AREA

Unit:
2,049 sq. ft. / 190 m²
Balcony:
416 sq. ft. / 38 m²
TOTAL:
2,466 sq. ft. / 229 m²



Plans are not to scale. All improvements, facilities, features and amenities are proposed only, preliminary and subject to change. The configuration, use of space and floor plan design are proposed and subject to change. All dimensions, square footages and square meters are approximate and subject to change. Balconies are not part of the proposed unit, but are proposed as limited common elements of the unit from which they are directly and exclusively accessible. Depictions of furnishings, fixtures and appliances are conceptual, for illustration purposes only and are not necessarily included in the units. Consult your purchase agreement for items included with your unit. No guarantees or representations are made that any improvement, facilities, features or amenities described or depicted will be provided or built, or, if provided or built, will be of the same type or nature described. There are various methods for measuring the dimensions of a unit and depending on the method used, the measurements and resulting square footage and square meters of a unit in advertising materials may vary from the measurements, square footage and square meters of a unit as stated or described in the prospectus and the declaration for the Condominium. Stated unit square footages, square meters and dimensions are measured to the exterior boundaries of the exterior walls and the centerline of interior demising walls, including structural walls and other interior structural components of the building, and in fact vary from the square footages, square meters and dimensions that would be determined by using the description and definition of the "Unit" set forth in the prospectus and Declaration (which generally only includes the interior airspace between the perimeter walls and excludes all interior structural components and common elements within the perimeter walls of the Unit).

LEVEL 4

UNIT 402

3 Bedrooms + Den / 4.5 Bath

AREA

Unit:

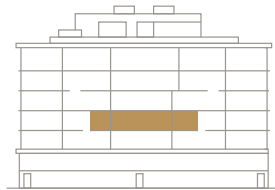
2,187 sq. ft. / 203 m²

Balcony:

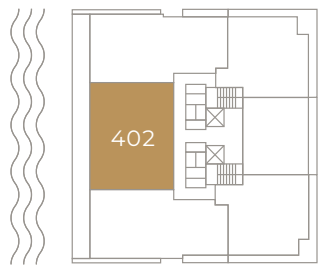
421 sq. ft. / 39 m²

TOTAL:

2,609 sq. ft. / 242 m²



WEST FACADE



Plans are not to scale. All improvements, facilities, features and amenities are proposed only, preliminary and subject to change. The configuration, use of space and floor plan design are proposed and subject to change. All dimensions, square footages and square meters are approximate and subject to change. Balconies are not part of the proposed unit, but are proposed as limited common elements of the unit from which they are directly and exclusively accessible. Depictions of furnishings, fixtures and appliances are conceptual, for illustration purposes only and are not necessarily included in the units. Consult your purchase agreement for items included with your unit. No guarantees or representations are made that any improvement, facilities, features or amenities described or depicted will be provided or built, or, if provided or built, will be of the same type or nature described. There are various methods for measuring the dimensions of a unit and depending on the method used, the measurements and resulting square footage and square meters of a unit in advertising materials may vary from the measurements, square footage and square meters of a unit as stated or described in the prospectus and the declaration for the Condominium. Stated unit square footages, square meters and dimensions are measured to the exterior boundaries of the exterior walls and the centerline of interior demising walls, including structural walls and other interior structural components of the building, and in fact vary from the square footages, square meters and dimensions that would be determined by using the description and definition of the "Unit" set forth in the prospectus and Declaration (which generally only includes the interior airspace between the perimeter walls and excludes all interior structural components and common elements within the perimeter walls of the Unit).

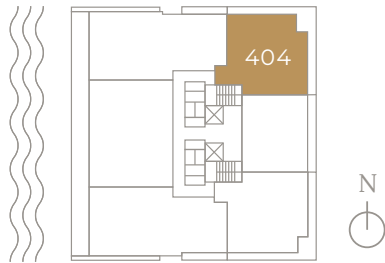
LEVEL 4

UNIT 404

3 Bedrooms / 3.5 Bath

AREA

Unit:
1,491 sq. ft. / 138 m²
Balcony:
364 sq. ft. / 34 m²
TOTAL:
1,856 sq. ft. / 172 m²



Plans are not to scale. All improvements, facilities, features and amenities are proposed only, preliminary and subject to change. The configuration, use of space and floor plan design are proposed and subject to change. All dimensions, square footages and square meters are approximate and subject to change. Balconies are not part of the proposed unit, but are proposed as limited common elements of the unit from which they are directly and exclusively accessible. Depictions of furnishings, fixtures and appliances are conceptual, for illustration purposes only and are not necessarily included in the units. Consult your purchase agreement for items included with your unit. No guarantees or representations are made that any improvement, facilities, features or amenities described or depicted will be provided or built, or, if provided or built, will be of the same type or nature described. There are various methods for measuring the dimensions of a unit and depending on the method used, the measurements and resulting square footage and square meters of a unit in advertising materials may vary from the measurements, square footage and square meters of a unit as stated or described in the prospectus and the declaration for the Condominium. Stated unit square footages, square meters and dimensions are measured to the exterior boundaries of the exterior walls and the centerline of interior demising walls, including structural walls and other interior structural components of the building, and in fact vary from the square footages, square meters and dimensions that would be determined by using the description and definition of the "Unit" set forth in the prospectus and Declaration (which generally only includes the interior airspace between the perimeter walls and excludes all interior structural components and common elements within the perimeter walls of the Unit).

LEVEL 4

UNIT 406

3 Bedrooms / 3.5 Bath

AREA

Unit:

1,491 sq. ft. / 138 m²

Balcony:

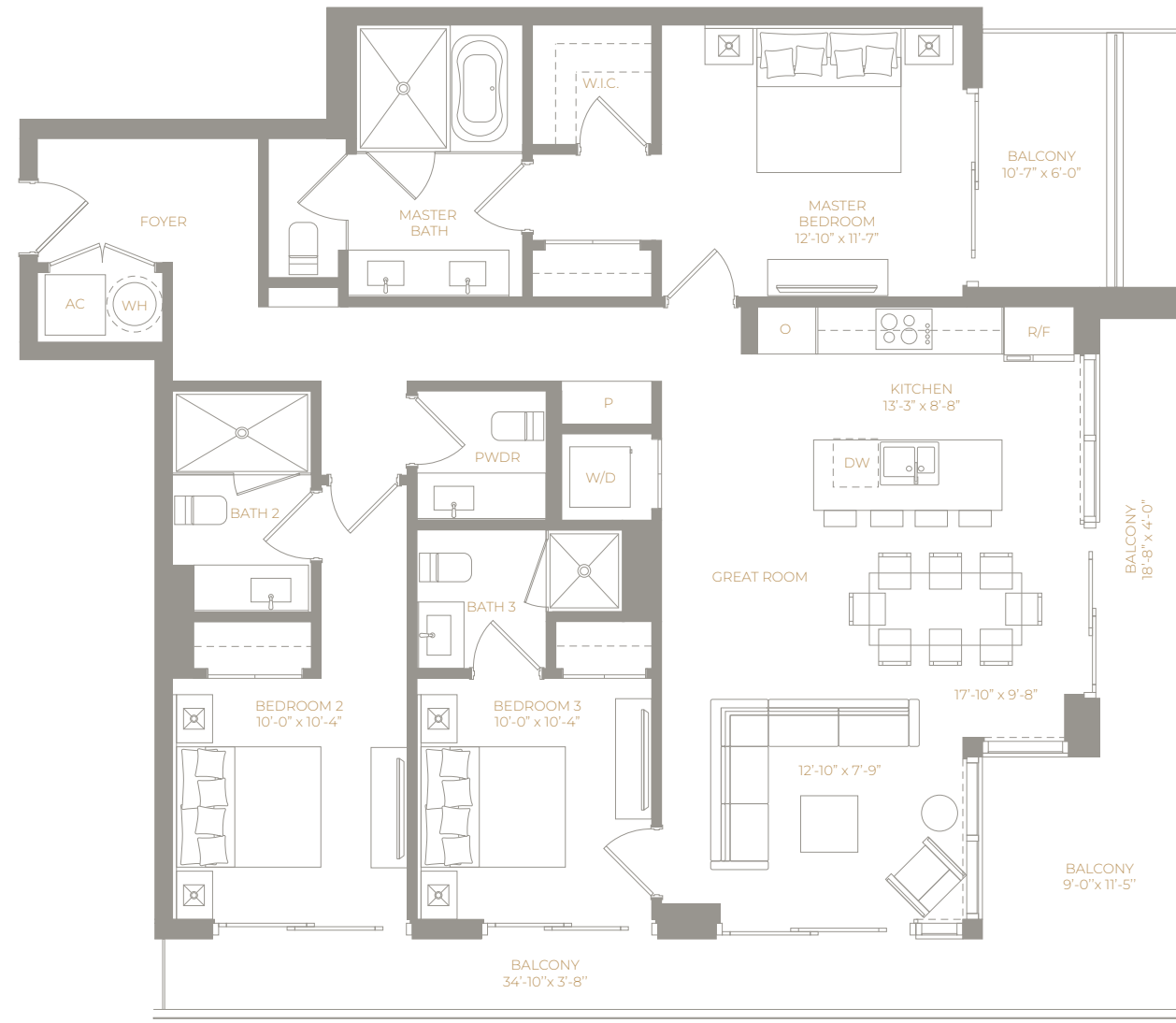
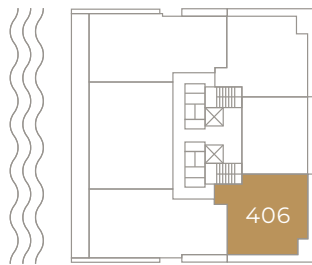
364 sq. ft. / 34 m²

TOTAL:

1,856 sq. ft. / 172 m²



EAST FACADE



Plans are not to scale. All improvements, facilities, features and amenities are proposed only, preliminary and subject to change. The configuration, use of space and floor plan design are proposed and subject to change. All dimensions, square footages and square meters are approximate and subject to change. Balconies are not part of the proposed unit, but are proposed as limited common elements of the unit from which they are directly and exclusively accessible. Depictions of furnishings, fixtures and appliances are conceptual, for illustration purposes only and are not necessarily included in the units. Consult your purchase agreement for items included with your unit. No guarantees or representations are made that any improvement, facilities, features or amenities described or depicted will be provided or built, or, if provided or built, will be of the same type or nature described. There are various methods for measuring the dimensions of a unit and depending on the method used, the measurements and resulting square footage and square meters of a unit in advertising materials may vary from the measurements, square footage and square meters of a unit as stated or described in the prospectus and the declaration for the Condominium. Stated unit square footages, square meters and dimensions are measured to the exterior boundaries of the exterior walls and the centerline of interior demising walls, including structural walls and other interior structural components of the building, and in fact vary from the square footages, square meters and dimensions that would be determined by using the description and definition of the "Unit" set forth in the prospectus and Declaration (which generally only includes the interior airspace between the perimeter walls and excludes all interior structural components and common elements within the perimeter walls of the Unit).

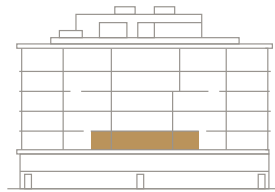
LEVEL 3

UNIT 302

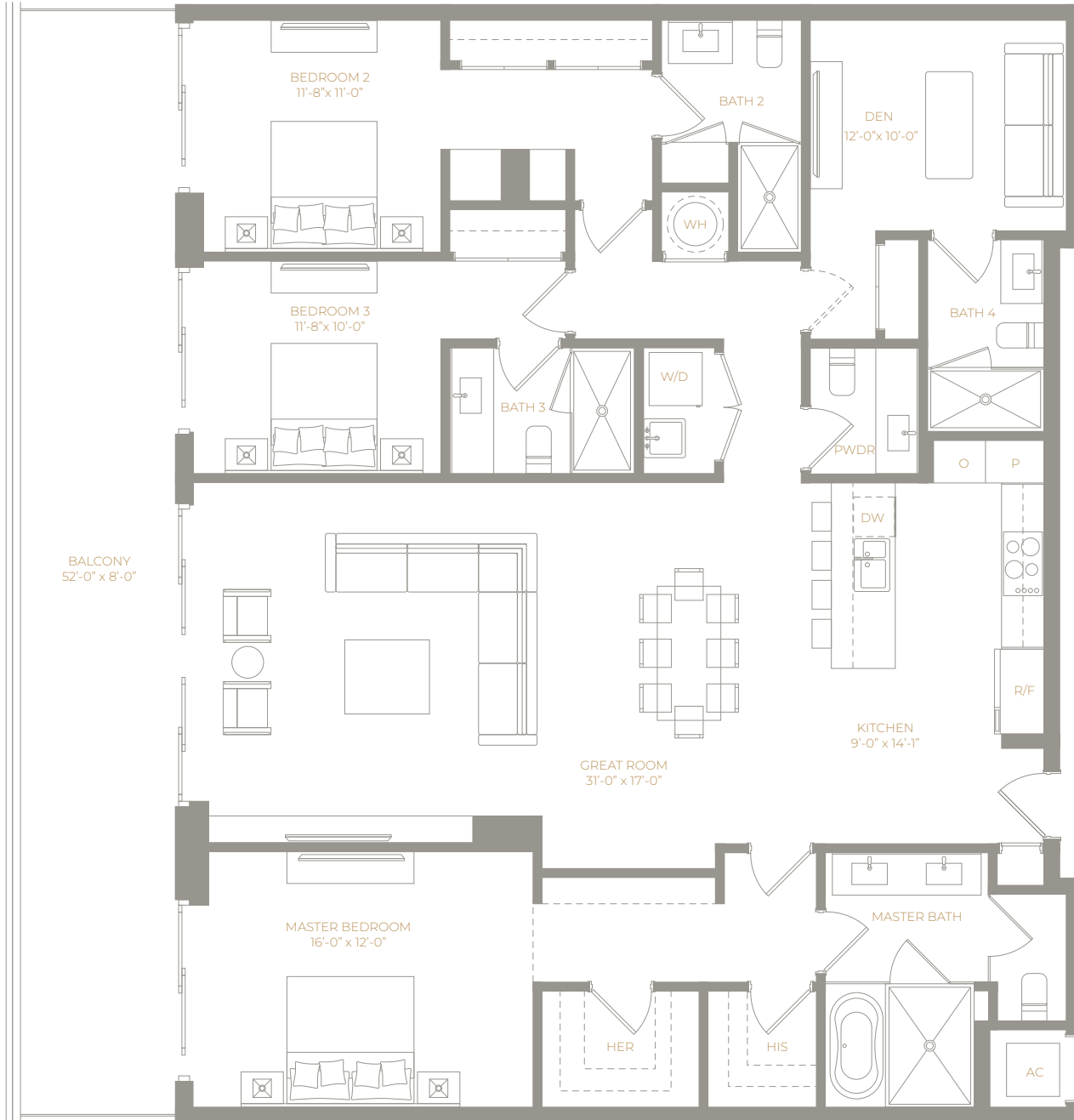
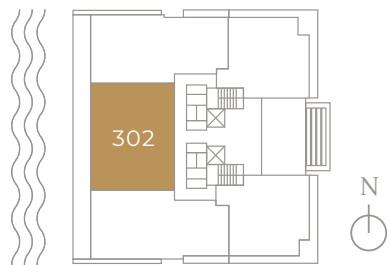
3 Bedrooms + Den / 4.5 Bath

AREA

Unit:
2,187 sq. ft. / 203 m²
Balcony:
416 sq. ft. / 38 m²
TOTAL:
2,603 sq. ft. / 241 m²



WEST FACADE



Plans are not to scale. All improvements, facilities, features and amenities are proposed only, preliminary and subject to change. The configuration, use of space and floor plan design are proposed and subject to change. All dimensions, square footages and square meters are approximate and subject to change. Balconies are not part of the proposed unit, but are proposed as limited common elements of the unit from which they are directly and exclusively accessible. Depictions of furnishings, fixtures and appliances are conceptual, for illustration purposes only and are not necessarily included in the units. Consult your purchase agreement for items included with your unit. No guarantees or representations are made that any improvement, facilities, features or amenities described or depicted will be provided or built, or, if provided or built, will be of the same type or nature described. There are various methods for measuring the dimensions of a unit and depending on the method used, the measurements and resulting square footage and square meters of a unit in advertising materials may vary from the measurements, square footage and square meters of a unit as stated or described in the prospectus and the declaration for the Condominium. Stated unit square footages, square meters and dimensions are measured to the exterior boundaries of the exterior walls and the centerline of interior demising walls, including structural walls and other interior structural components of the building, and in fact vary from the square footages, square meters and dimensions that would be determined by using the description and definition of the "Unit" set forth in the prospectus and Declaration (which generally only includes the interior airspace between the perimeter walls and excludes all interior structural components and common elements within the perimeter walls of the Unit).

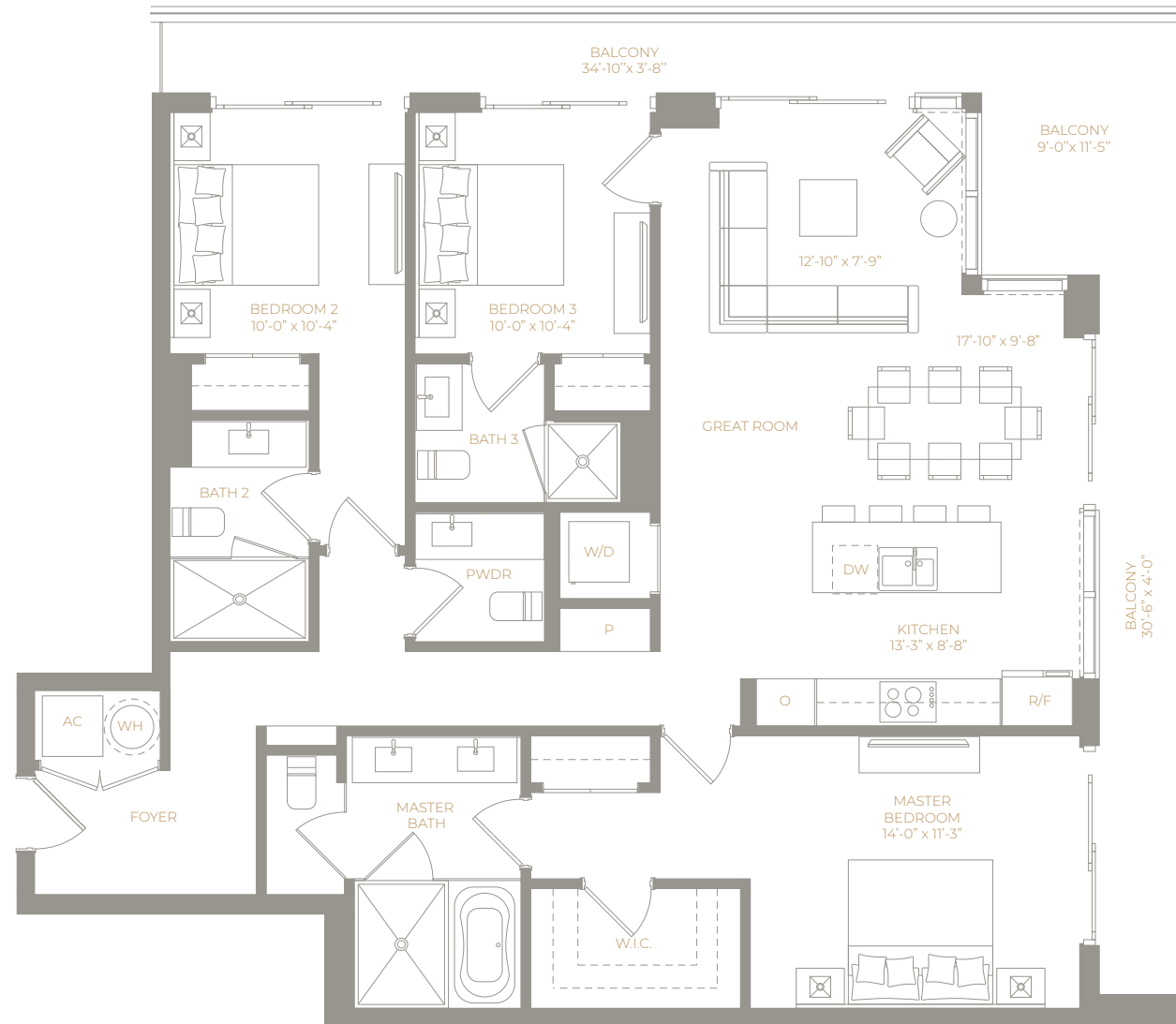
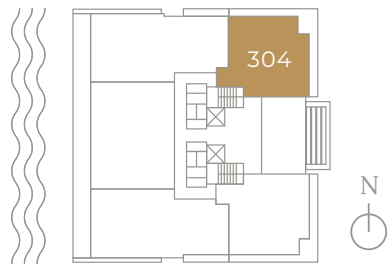
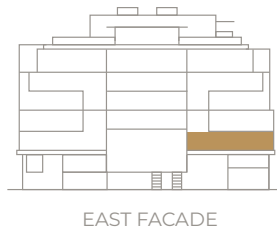
LEVEL 3

UNIT 304

3 Bedrooms / 3.5 Bath

AREA

Unit:
1,549 sq. ft. / 144 m²
Balcony:
352 sq. ft. / 33 m²
TOTAL:
1,902 sq. ft. / 177 m²



Plans are not to scale. All improvements, facilities, features and amenities are proposed only, preliminary and subject to change. The configuration, use of space and floor plan design are proposed and subject to change. All dimensions, square footages and square meters are approximate and subject to change. Balconies are not part of the proposed unit, but are proposed as limited common elements of the unit from which they are directly and exclusively accessible. Depictions of furnishings, fixtures and appliances are conceptual, for illustration purposes only and are not necessarily included in the units. Consult your purchase agreement for items included with your unit. No guarantees or representations are made that any improvement, facilities, features or amenities described or depicted will be provided or built, or, if provided or built, will be of the same type or nature described. There are various methods for measuring the dimensions of a unit and depending on the method used, the measurements and resulting square footage and square meters of a unit in advertising materials may vary from the measurements, square footage and square meters of a unit as stated or described in the prospectus and the declaration for the Condominium. Stated unit square footages, square meters and dimensions are measured to the exterior boundaries of the exterior walls and the centerline of interior demising walls, including structural walls and other interior structural components of the building, and in fact vary from the square footages, square meters and dimensions that would be determined by using the description and definition of the "Unit" set forth in the prospectus and Declaration (which generally only includes the interior airspace between the perimeter walls and excludes all interior structural components and common elements within the perimeter walls of the Unit).

LEVEL 3

UNIT 306

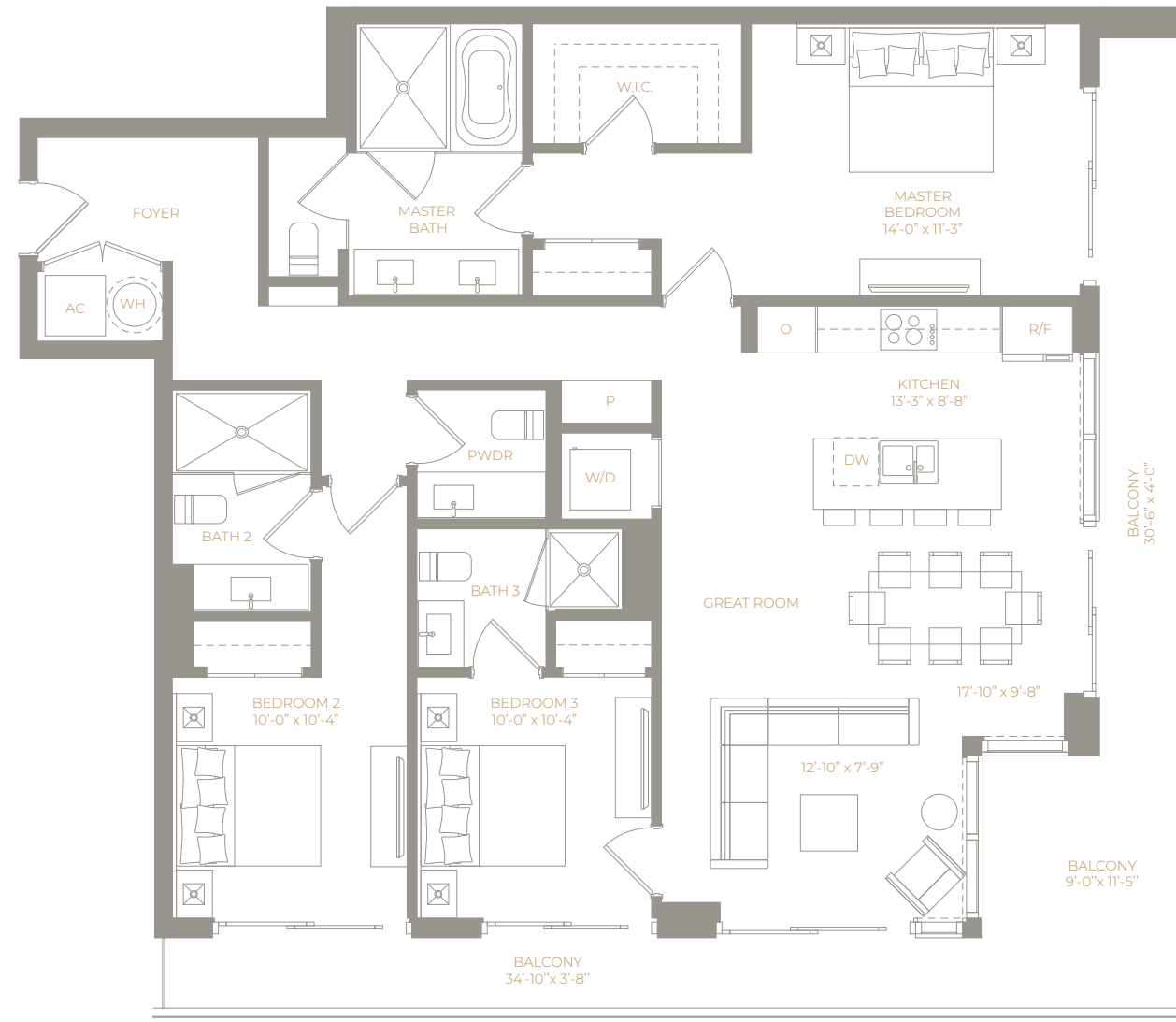
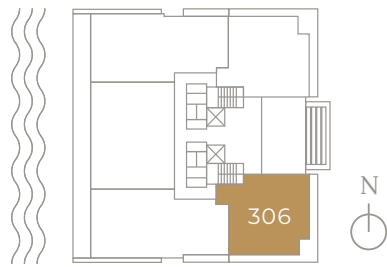
3 Bedrooms / 3.5 Bath

AREA

Unit:
1,549 sq. ft. / 144 m²
Balcony:
352 sq. ft. / 33 m²
TOTAL:
1,902 sq. ft. / 177 m²



EAST FACADE



Plans are not to scale. All improvements, facilities, features and amenities are proposed only, preliminary and subject to change. The configuration, use of space and floor plan design are proposed and subject to change. All dimensions, square footages and square meters are approximate and subject to change. Balconies are not part of the proposed unit, but are proposed as limited common elements of the unit from which they are directly and exclusively accessible. Depictions of furnishings, fixtures and appliances are conceptual, for illustration purposes only and are not necessarily included in the units. Consult your purchase agreement for items included with your unit. No guarantees or representations are made that any improvement, facilities, features or amenities described or depicted will be provided or built, or, if provided or built, will be of the same type or nature described. There are various methods for measuring the dimensions of a unit and depending on the method used, the measurements and resulting square footage and square meters of a unit in advertising materials may vary from the measurements, square footage and square meters of a unit as stated or described in the prospectus and the declaration for the Condominium. Stated unit square footages, square meters and dimensions are measured to the exterior boundaries of the exterior walls and the centerline of interior demising walls, including structural walls and other interior structural components of the building, and in fact vary from the square footages, square meters and dimensions that would be determined by using the description and definition of the "Unit" set forth in the prospectus and Declaration (which generally only includes the interior airspace between the perimeter walls and excludes all interior structural components and common elements within the perimeter walls of the Unit).

4 BEDROOM COLLECTION

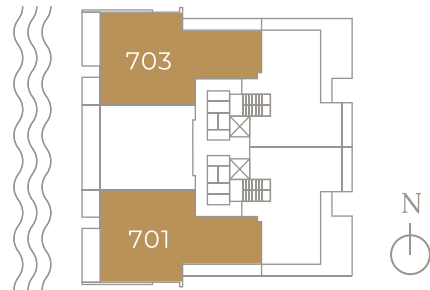
PH LEVEL 7

UNIT 701

4 Bedrooms / 4.5 Bath
2,200 sq. ft. / 204 m²

UNIT 703

4 Bedrooms / 4.5 Bath
2,200 sq. ft. / 204 m²



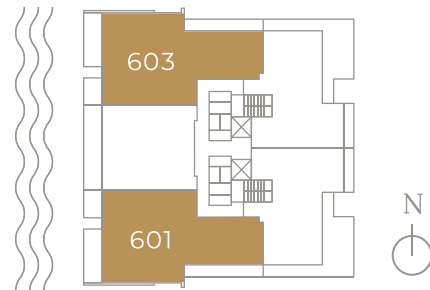
LEVEL 6

UNIT 601

4 Bedrooms + Den / 4.5 Bath
2,328 sq. ft. / 216 m²

UNIT 603

4 Bedrooms + Den / 4.5 Bath
2,328 sq. ft. / 216 m²



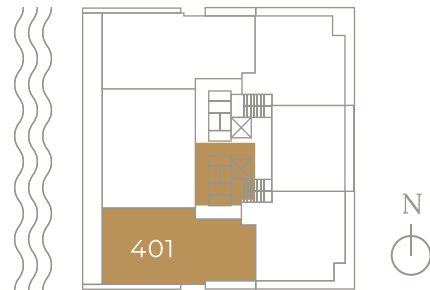
LEVEL 4

UNIT 401

4 Bedrooms / 4 Bath
2,135 sq. ft. / 198 m²

UNIT 403

4 Bedrooms / 4 Bath
2,135 sq. ft. / 198 m²



LEVEL 3

UNIT 301

4 Bedrooms / 4 Bath
2,135 sq. ft. / 198 m²

UNIT 303

4 Bedrooms / 4 Bath
2,135 sq. ft. / 198 m²



All improvements are proposed. All square footages and square meters are approximate and subject to change. Balconies are not part of the proposed units, but are proposed as limited common elements of the unit from which they are directly and exclusively accessible. There are various methods for measuring the dimensions of a unit and depending on the method used, the measurements and resulting square footage and square meters of a unit in advertising materials may vary from the measurements, square footage and square meters of a unit as stated or described in the prospectus and the declaration for the Condominium. Stated unit square footages, square meters and dimensions are measured to the exterior boundaries of the exterior walls and the centerline of interior demising walls, including structural walls and other interior structural components of the building, and in fact vary from the square footages, square meters and dimensions that would be determined by using the description and definition of the "Unit" set forth in the prospectus and Declaration (which generally only includes the interior airspace between the perimeter walls and excludes all interior structural components and common elements within the perimeter walls of the Unit).

LEVEL 7

UNIT 701

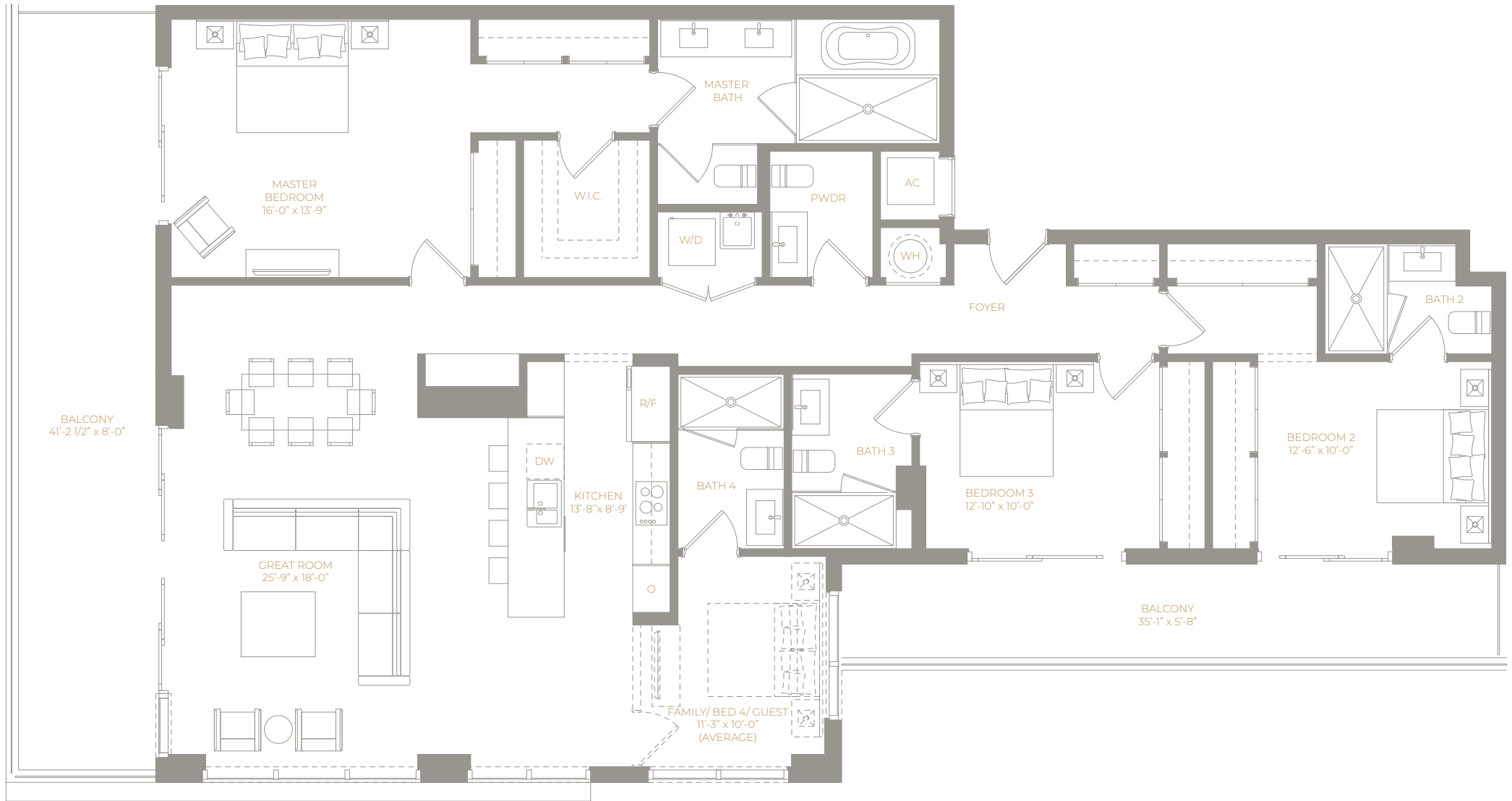
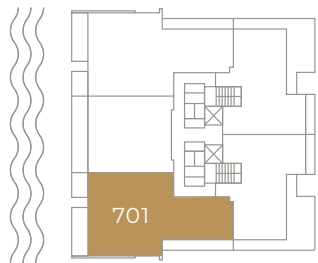
4 Bedrooms
/ 4.5 Bath

AREA

Unit:
2,200 sq. ft. / 204 m²
Balcony:
528 sq. ft. / 49 m²
TOTAL:
2,728 sq. ft. / 253 m²



WEST FACADE



Plans are not to scale. All improvements, facilities, features and amenities are proposed only, preliminary and subject to change. The configuration, use of space and floor plan design are proposed and subject to change. All dimensions, square footages and square meters are approximate and subject to change. Balconies are not part of the proposed unit, but are proposed as limited common elements of the unit from which they are directly and exclusively accessible. Depictions of furnishings, fixtures and appliances are conceptual, for illustration purposes only and are not necessarily included in the units. Consult your purchase agreement for items included with your unit. No guarantees or representations are made that any improvement, facilities, features or amenities described or depicted will be provided or built, or, if provided or built, will be of the same type or nature described. There are various methods for measuring the dimensions of a unit and depending on the method used, the measurements and resulting square footage and square meters of a unit in advertising materials may vary from the measurements, square footage and square meters of a unit as stated or described in the prospectus and the declaration for the Condominium. Stated unit square footages, square meters and dimensions are measured to the exterior boundaries of the exterior walls and the centerline of interior demising walls, including structural walls and other interior structural components of the building, and in fact vary from the square footages, square meters and dimensions that would be determined by using the description and definition of the "Unit" set forth in the prospectus and Declaration (which generally only includes the interior airspace between the perimeter walls and excludes all interior structural components and common elements within the perimeter walls of the Unit).

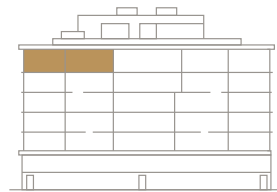
LEVEL 7

UNIT 703

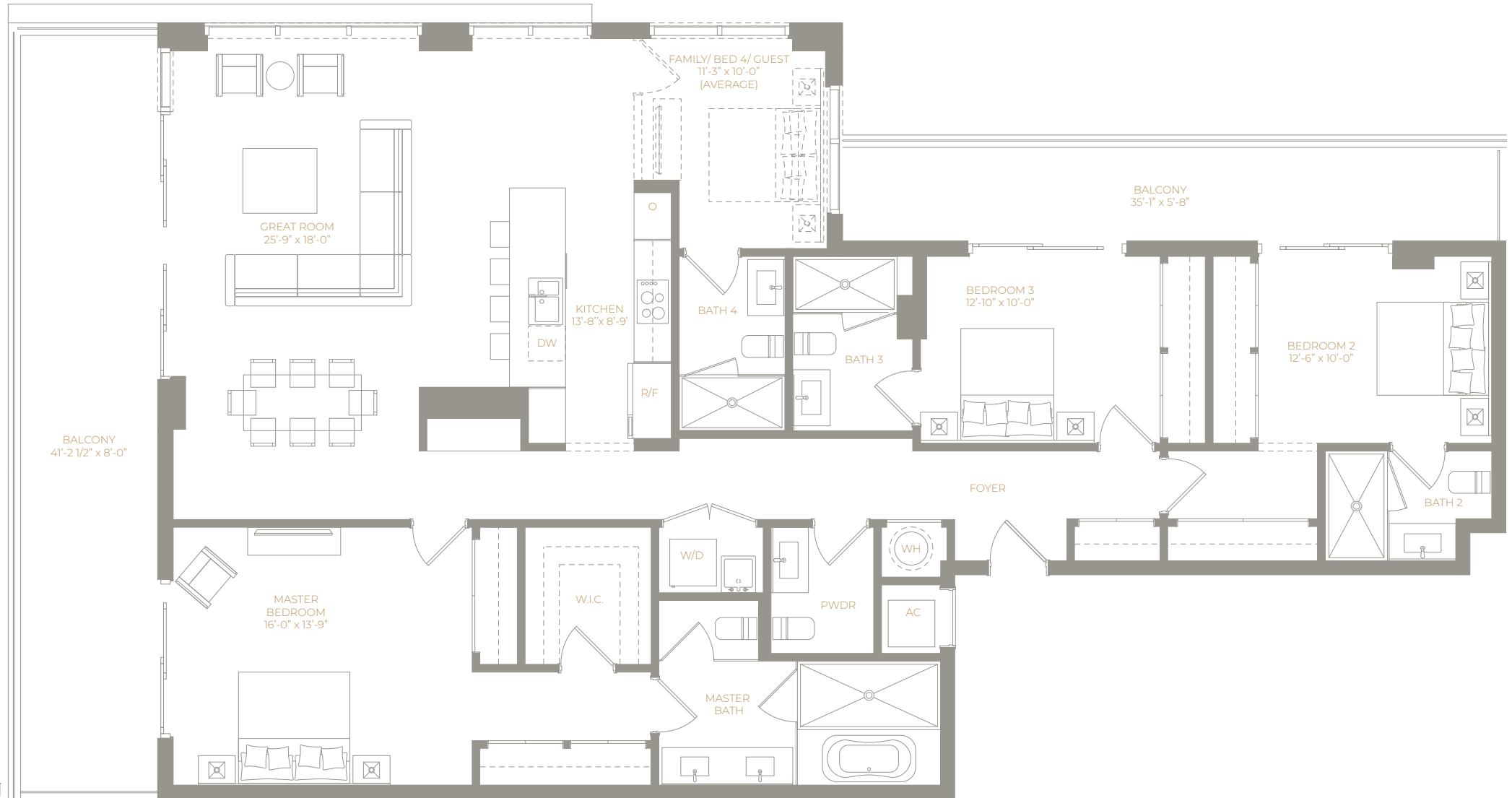
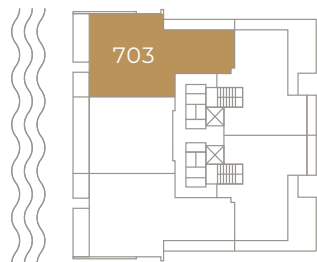
4 Bedrooms
/ 4.5 Bath

AREA

Unit:
2,200 sq. ft. / 204 m²
Balcony:
528 sq. ft. / 49 m²
TOTAL:
2,728 sq. ft. / 253 m²



WEST FACADE



Plans are not to scale. All improvements, facilities, features and amenities are proposed only, preliminary and subject to change. The configuration, use of space and floor plan design are proposed and subject to change. All dimensions, square footages and square meters are approximate and subject to change. Balconies are not part of the proposed unit, but are proposed as limited common elements of the unit from which they are directly and exclusively accessible. Depictions of furnishings, fixtures and appliances are conceptual, for illustration purposes only and are not necessarily included in the units. Consult your purchase agreement for items included with your unit. No guarantees or representations are made that any improvement, facilities, features or amenities described or depicted will be provided or built, or, if provided or built, will be of the same type or nature described. There are various methods for measuring the dimensions of a unit and depending on the method used, the measurements and resulting square footage and square meters of a unit in advertising materials may vary from the measurements, square footage and square meters of a unit as stated or described in the prospectus and the declaration for the Condominium. Stated unit square footages, square meters and dimensions are measured to the exterior boundaries of the exterior walls and the centerline of interior demising walls, including structural walls and other interior structural components of the building, and in fact vary from the square footages, square meters and dimensions that would be determined by using the description and definition of the "Unit" set forth in the prospectus and Declaration (which generally only includes the interior airspace between the perimeter walls and excludes all interior structural components and common elements within the perimeter walls of the Unit).

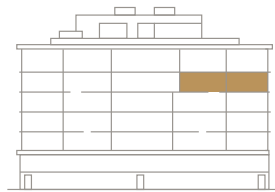
LEVEL 6

UNIT 601

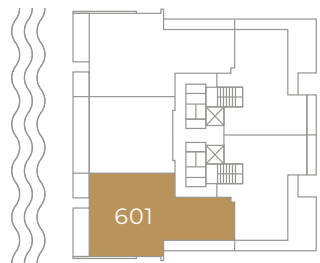
4 Bedrooms + Den
/ 4.5 Bath

AREA

Unit:
2,328 sq. ft. / 216 m²
Balcony:
471 sq. ft. / 43 m²
TOTAL:
2,799 sq. ft. / 260 m²



WEST FACADE



Plans are not to scale. All improvements, facilities, features and amenities are proposed only, preliminary and subject to change. The configuration, use of space and floor plan design are proposed and subject to change. All dimensions, square footages and square meters are approximate and subject to change. Balconies are not part of the proposed unit, but are proposed as limited common elements of the unit from which they are directly and exclusively accessible. Depictions of furnishings, fixtures and appliances are conceptual, for illustration purposes only and are not necessarily included in the units. Consult your purchase agreement for items included with your unit. No guarantees or representations are made that any improvement, facilities, features or amenities described or depicted will be provided or built, or, if provided or built, will be of the same type or nature described. There are various methods for measuring the dimensions of a unit and depending on the method used, the measurements and resulting square footage and square meters of a unit in advertising materials may vary from the measurements, square footage and square meters of a unit as stated or described in the prospectus and the declaration for the Condominium. Stated unit square footages, square meters and dimensions are measured to the exterior boundaries of the exterior walls and the centerline of interior demising walls, including structural walls and other interior structural components of the building, and in fact vary from the square footages, square meters and dimensions that would be determined by using the description and definition of the "Unit" set forth in the prospectus and Declaration (which generally only includes the interior airspace between the perimeter walls and excludes all interior structural components and common elements within the perimeter walls of the Unit).

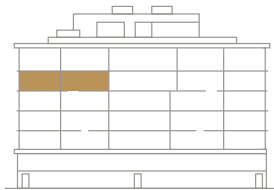
LEVEL 6

UNIT 603

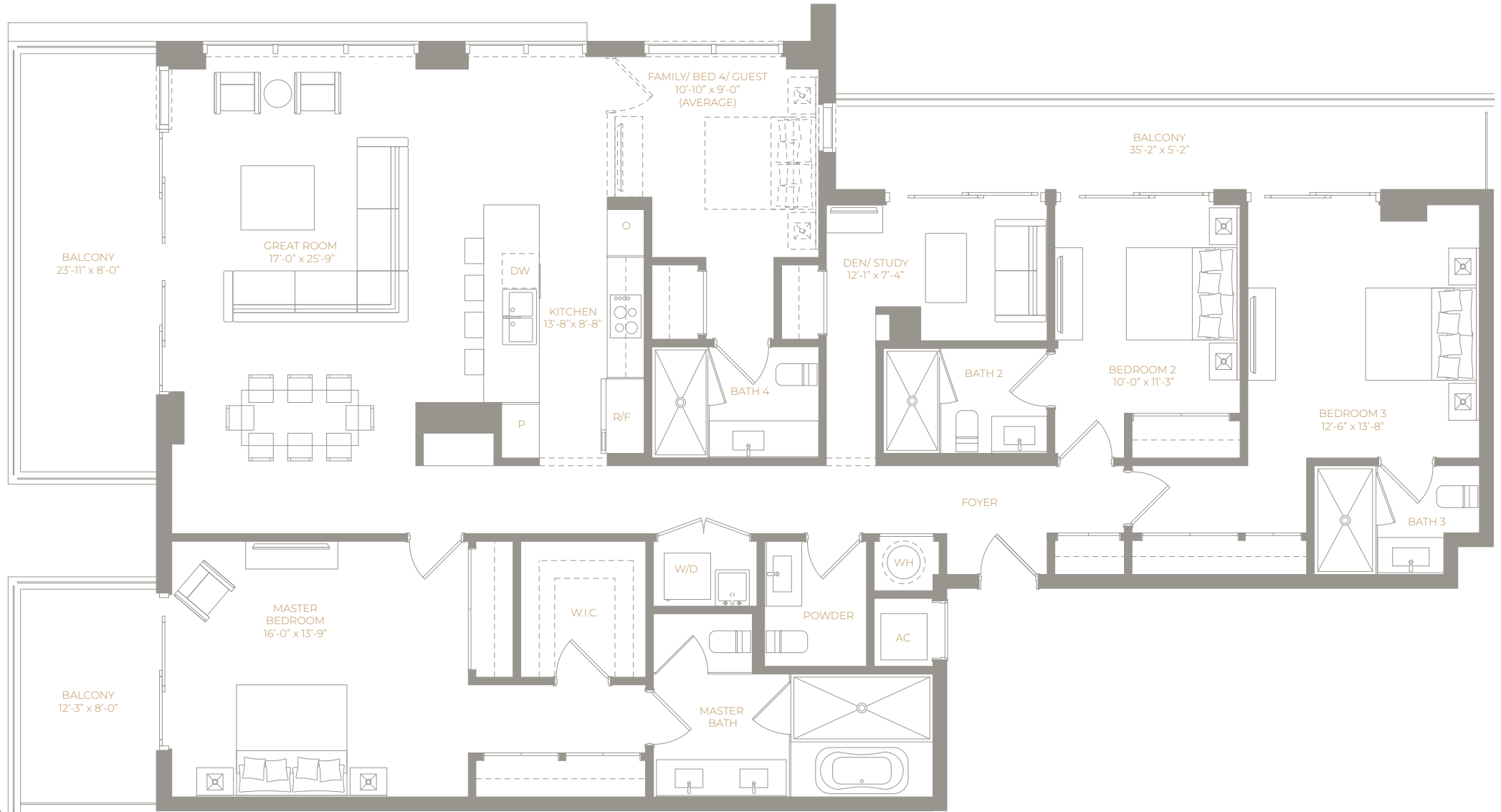
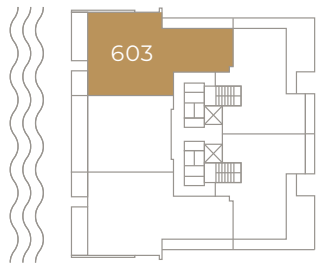
4 Bedrooms + Den
/ 4.5 Bath

AREA

Unit:
2,328 sq. ft. / 216 m²
Balcony:
471 sq. ft. / 43 m²
TOTAL:
2,799 sq. ft. / 260 m²



WEST FACADE



Plans are not to scale. All improvements, facilities, features and amenities are proposed only, preliminary and subject to change. The configuration, use of space and floor plan design are proposed and subject to change. All dimensions, square footages and square meters are approximate and subject to change. Balconies are not part of the proposed unit, but are proposed as limited common elements of the unit from which they are directly and exclusively accessible. Depictions of furnishings, fixtures and appliances are conceptual, for illustration purposes only and are not necessarily included in the units. Consult your purchase agreement for items included with your unit. No guarantees or representations are made that any improvement, facilities, features or amenities described or depicted will be provided or built, or, if provided or built, will be of the same type or nature described. There are various methods for measuring the dimensions of a unit and depending on the method used, the measurements and resulting square footage and square meters of a unit in advertising materials may vary from the measurements, square footage and square meters of a unit as stated or described in the prospectus and the declaration for the Condominium. Stated unit square footages, square meters and dimensions are measured to the exterior boundaries of the exterior walls and the centerline of interior demising walls, including structural walls and other interior structural components of the building, and in fact vary from the square footages, square meters and dimensions that would be determined by using the description and definition of the "Unit" set forth in the prospectus and Declaration (which generally only includes the interior airspace between the perimeter walls and excludes all interior structural components and common elements within the perimeter walls of the Unit).

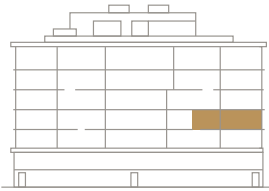
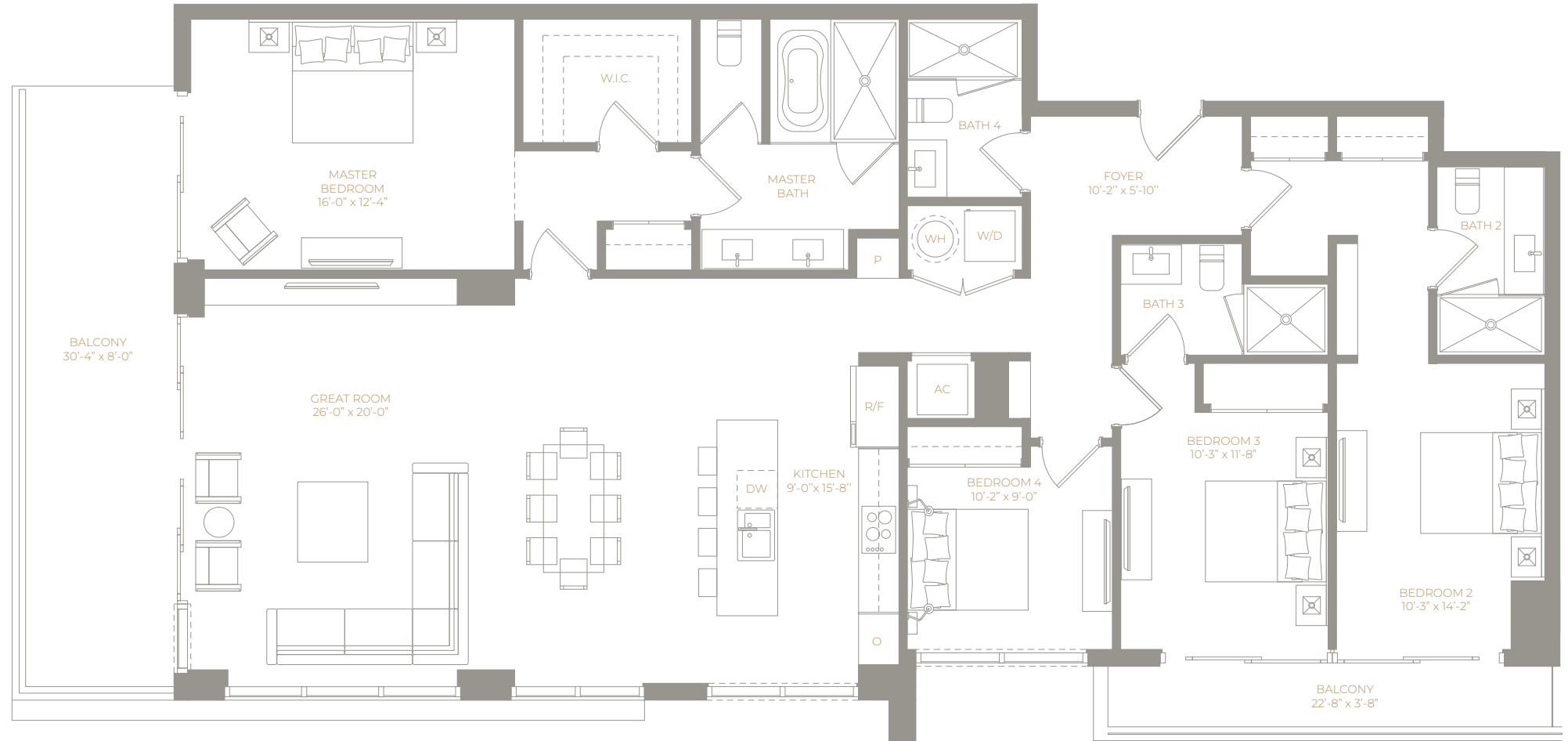
LEVEL 4

UNIT 401

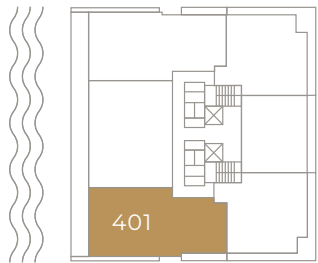
4 Bedrooms / 4 Bath

AREA

Unit:
2,135 sq. ft. / 198 m²
Balcony:
326 sq. ft. / 30 m²
TOTAL:
2,461 sq. ft. / 228 m²



WEST FACADE



Plans are not to scale. All improvements, facilities, features and amenities are proposed only, preliminary and subject to change. The configuration, use of space and floor plan design are proposed and subject to change. All dimensions, square footages and square meters are approximate and subject to change. Balconies are not part of the proposed unit, but are proposed as limited common elements of the unit from which they are directly and exclusively accessible. Depictions of furnishings, fixtures and appliances are conceptual, for illustration purposes only and are not necessarily included in the units. Consult your purchase agreement for items included with your unit. No guarantees or representations are made that any improvement, facilities, features or amenities described or depicted will be provided or built, or, if provided or built, will be of the same type or nature described. There are various methods for measuring the dimensions of a unit and depending on the method used, the measurements and resulting square footage and square meters of a unit in advertising materials may vary from the measurements, square footage and square meters of a unit as stated or described in the prospectus and the declaration for the Condominium. Stated unit square footages, square meters and dimensions are measured to the exterior boundaries of the exterior walls and the centerline of interior demising walls, including structural walls and other interior structural components of the building, and in fact vary from the square footages, square meters and dimensions that would be determined by using the description and definition of the "Unit" set forth in the prospectus and Declaration (which generally only includes the interior airspace between the perimeter walls and excludes all interior structural components and common elements within the perimeter walls of the Unit).

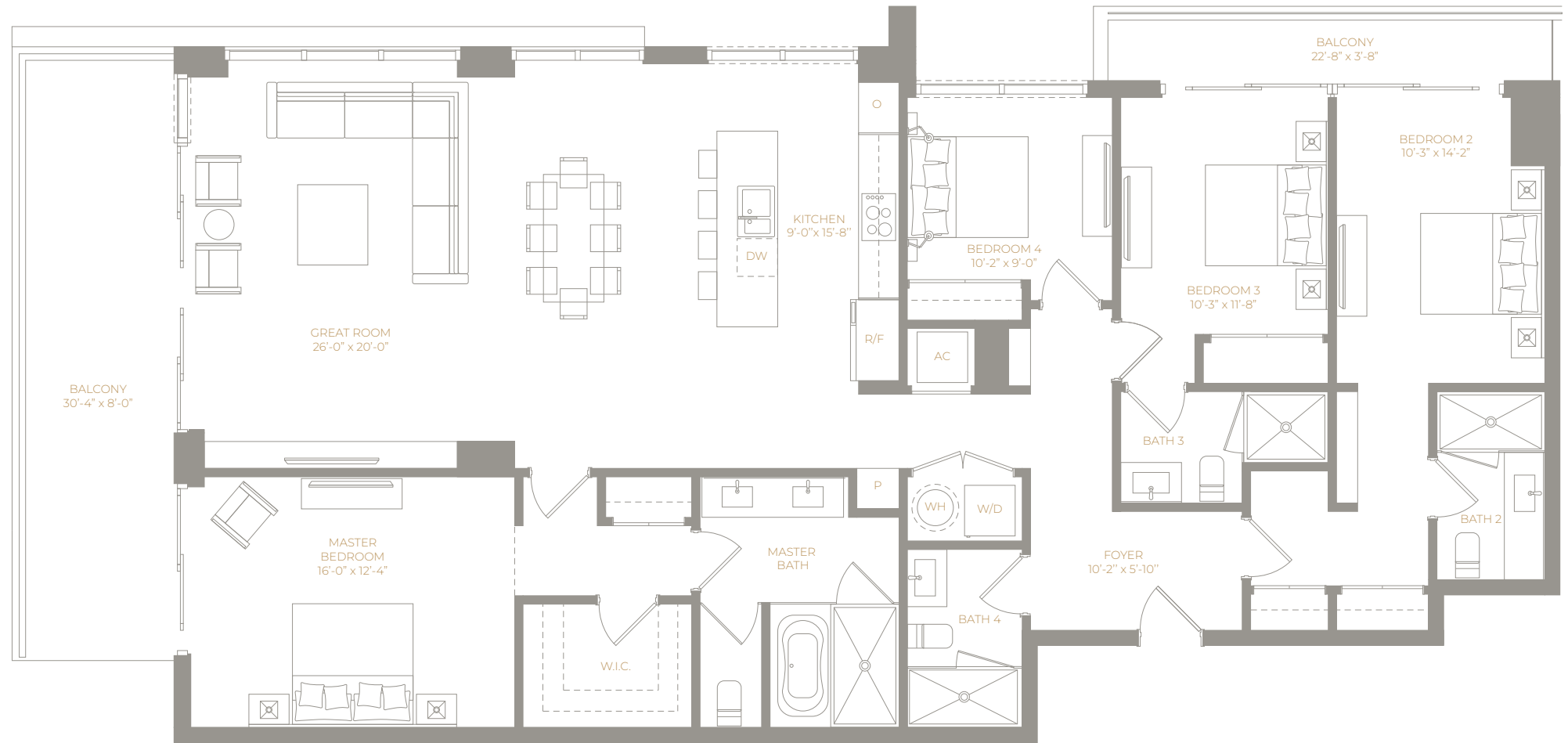
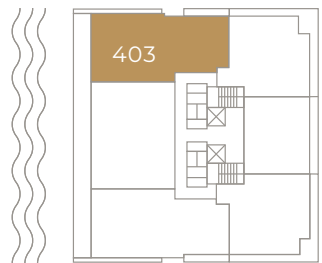
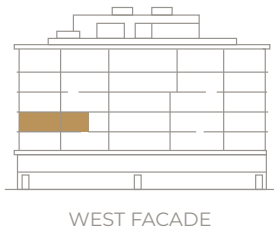
LEVEL 4

UNIT 403

4 Bedrooms / 4 Bath

AREA

Unit:
2,135 sq. ft. / 198 m²
Balcony:
326 sq. ft. / 30 m²
TOTAL:
2,461 sq. ft. / 228 m²



Plans are not to scale. All improvements, facilities, features and amenities are proposed only, preliminary and subject to change. The configuration, use of space and floor plan design are proposed and subject to change. All dimensions, square footages and square meters are approximate and subject to change. Balconies are not part of the proposed unit, but are proposed as limited common elements of the unit from which they are directly and exclusively accessible. Depictions of furnishings, fixtures and appliances are conceptual, for illustration purposes only and are not necessarily included in the units. Consult your purchase agreement for items included with your unit. No guarantees or representations are made that any improvement, facilities, features or amenities described or depicted will be provided or built, or, if provided or built, will be of the same type or nature described. There are various methods for measuring the dimensions of a unit and depending on the method used, the measurements and resulting square footage and square meters of a unit in advertising materials may vary from the measurements, square footage and square meters of a unit as stated or described in the prospectus and the declaration for the Condominium. Stated unit square footages, square meters and dimensions are measured to the exterior boundaries of the exterior walls and the centerline of interior demising walls, including structural walls and other interior structural components of the building, and in fact vary from the square footages, square meters and dimensions that would be determined by using the description and definition of the "Unit" set forth in the prospectus and Declaration (which generally only includes the interior airspace between the perimeter walls and excludes all interior structural components and common elements within the perimeter walls of the Unit).

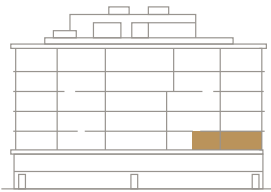
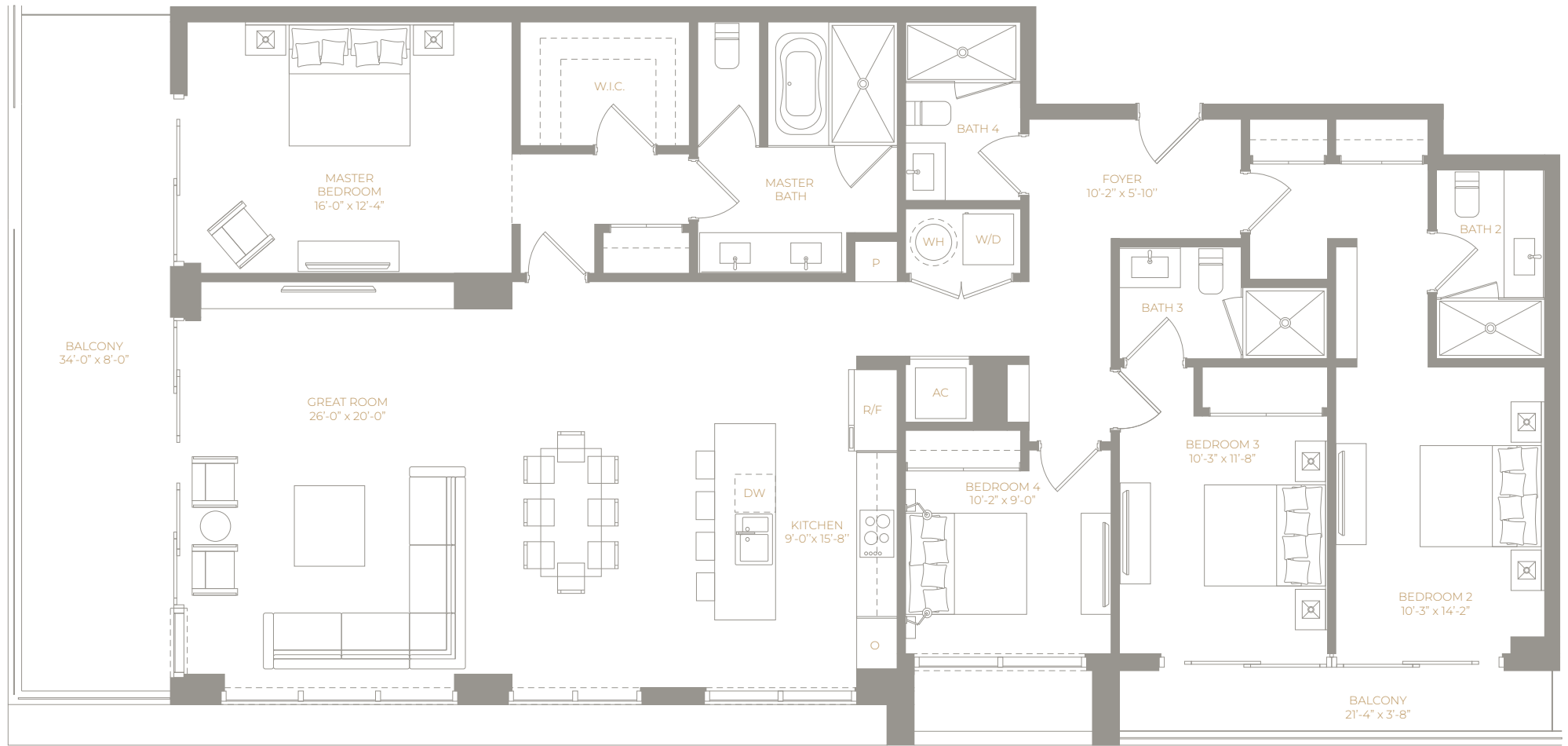
LEVEL 3

UNIT 301

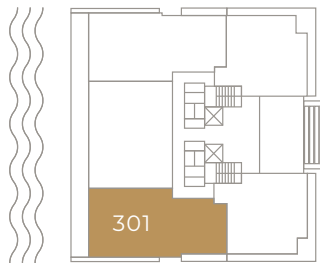
4 Bedrooms / 4 Bath

AREA

Unit:
2,135 sq. ft. / 198 m²
Balcony:
355 sq. ft. / 33 m²
TOTAL:
2,490 sq. ft. / 231 m²



WEST FACADE



Plans are not to scale. All improvements, facilities, features and amenities are proposed only, preliminary and subject to change. The configuration, use of space and floor plan design are proposed and subject to change. All dimensions, square footages and square meters are approximate and subject to change. Balconies are not part of the proposed unit, but are proposed as limited common elements of the unit from which they are directly and exclusively accessible. Depictions of furnishings, fixtures and appliances are conceptual, for illustration purposes only and are not necessarily included in the units. Consult your purchase agreement for items included with your unit. No guarantees or representations are made that any improvement, facilities, features or amenities described or depicted will be provided or built, or, if provided or built, will be of the same type or nature described. There are various methods for measuring the dimensions of a unit and depending on the method used, the measurements and resulting square footage and square meters of a unit in advertising materials may vary from the measurements, square footage and square meters of a unit as stated or described in the prospectus and the declaration for the Condominium. Stated unit square footages, square meters and dimensions are measured to the exterior boundaries of the exterior walls and the centerline of interior demising walls, including structural walls and other interior structural components of the building, and in fact vary from the square footages, square meters and dimensions that would be determined by using the description and definition of the "Unit" set forth in the prospectus and Declaration (which generally only includes the interior airspace between the perimeter walls and excludes all interior structural components and common elements within the perimeter walls of the Unit).

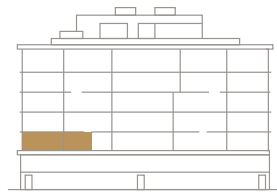
LEVEL 3

UNIT 303

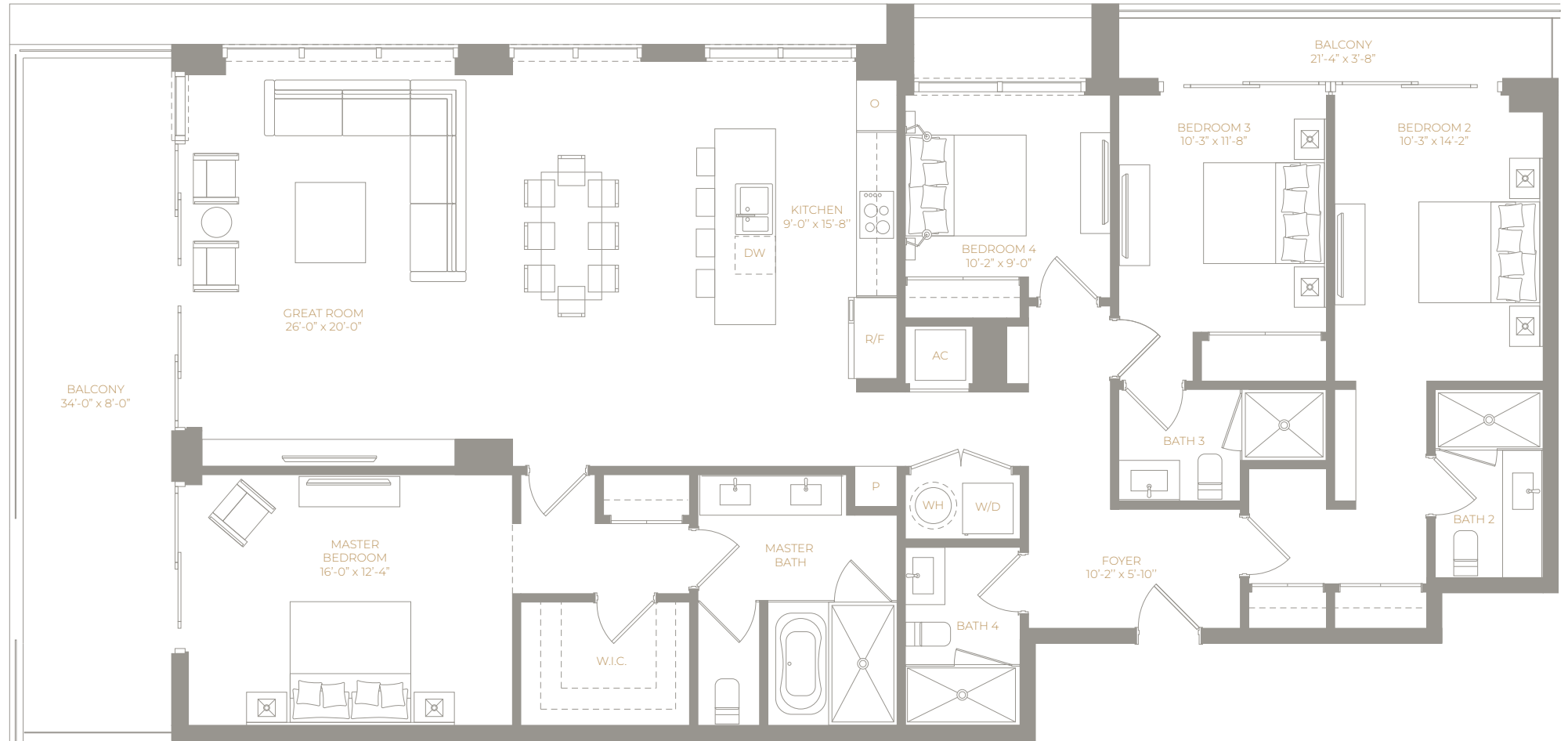
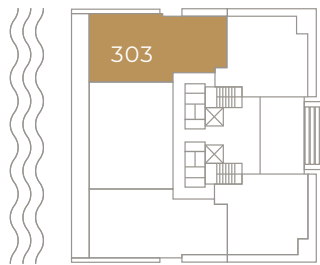
4 Bedrooms / 4 Bath

AREA

Unit:
2,135 sq. ft. / 198 m²
Balcony:
355 sq. ft. / 33 m²
TOTAL:
2,490 sq. ft. / 231 m²



WEST FACADE

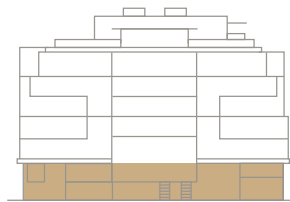


Plans are not to scale. All improvements, facilities, features and amenities are proposed only, preliminary and subject to change. The configuration, use of space and floor plan design are proposed and subject to change. All dimensions, square footages and square meters are approximate and subject to change. Balconies are not part of the proposed unit, but are proposed as limited common elements of the unit from which they are directly and exclusively accessible. Depictions of furnishings, fixtures and appliances are conceptual, for illustration purposes only and are not necessarily included in the units. Consult your purchase agreement for items included with your unit. No guarantees or representations are made that any improvement, facilities, features or amenities described or depicted will be provided or built, or, if provided or built, will be of the same type or nature described. There are various methods for measuring the dimensions of a unit and depending on the method used, the measurements and resulting square footage and square meters of a unit in advertising materials may vary from the measurements, square footage and square meters of a unit as stated or described in the prospectus and the declaration for the Condominium. Stated unit square footages, square meters and dimensions are measured to the exterior boundaries of the exterior walls and the centerline of interior demising walls, including structural walls and other interior structural components of the building, and in fact vary from the square footages, square meters and dimensions that would be determined by using the description and definition of the "Unit" set forth in the prospectus and Declaration (which generally only includes the interior airspace between the perimeter walls and excludes all interior structural components and common elements within the perimeter walls of the Unit).



AMENITIES

LOBBY LEVEL

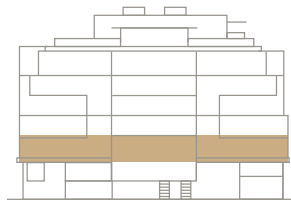


EAST FACADE

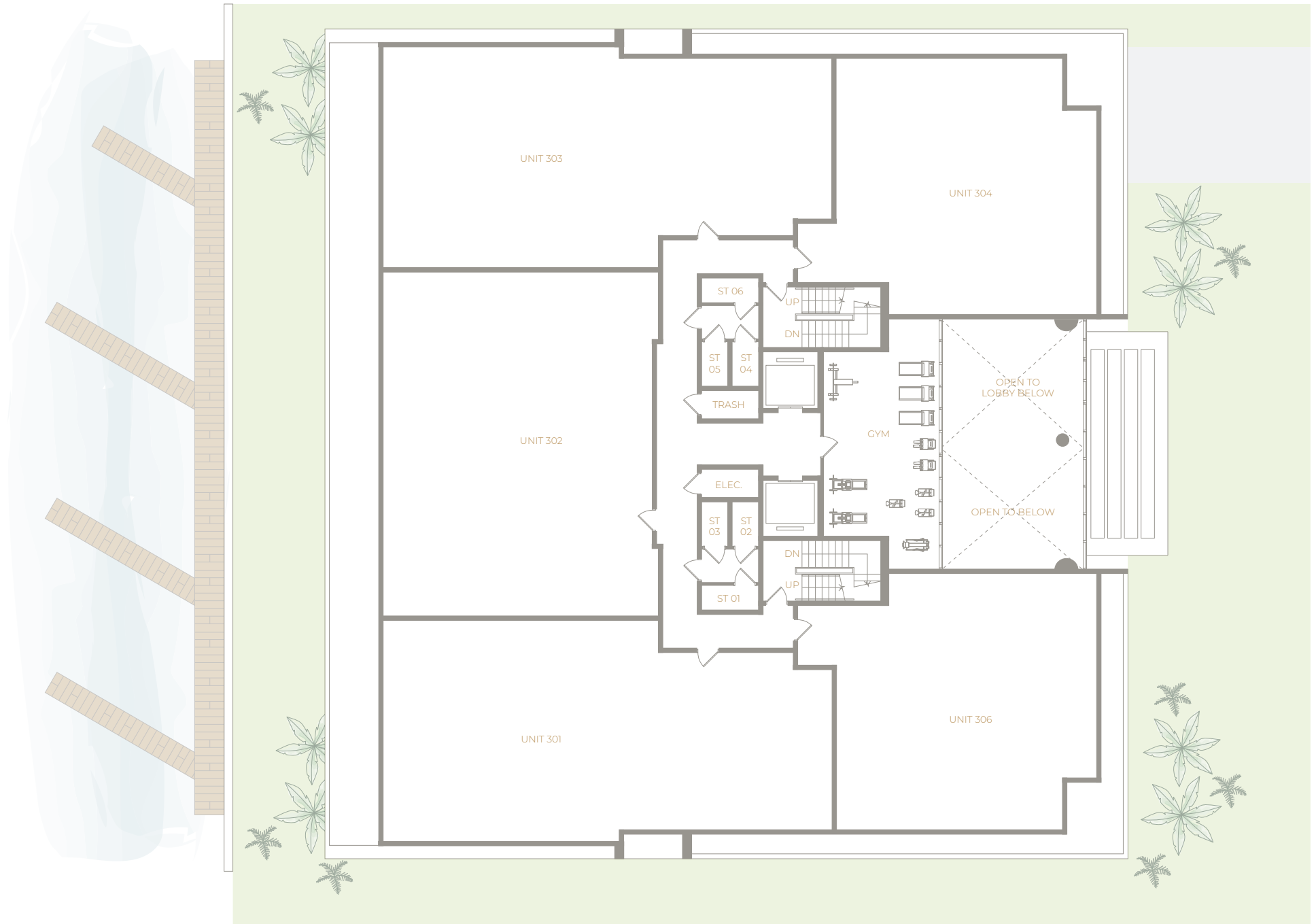


Plans are not to scale. All improvements, facilities, features and amenities (including the dock and boat slips) are proposed only, preliminary and subject to change or elimination. The configuration, use of space or floor plan design are proposed and subject to change. Depictions of furnishings, equipment and landscaping are conceptual and for illustration purposes only. Amenities (including the dock and boat slips) are proposed and subject to change, replacement or elimination. No guarantees or representations are made that any improvement, facilities, features or amenities (including the dock and boat slips) described or depicted will be provided or built, or, if provided or built, will be of the same type or nature described.

LEVEL 3

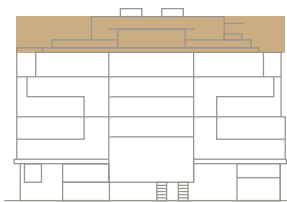


EAST FACADE

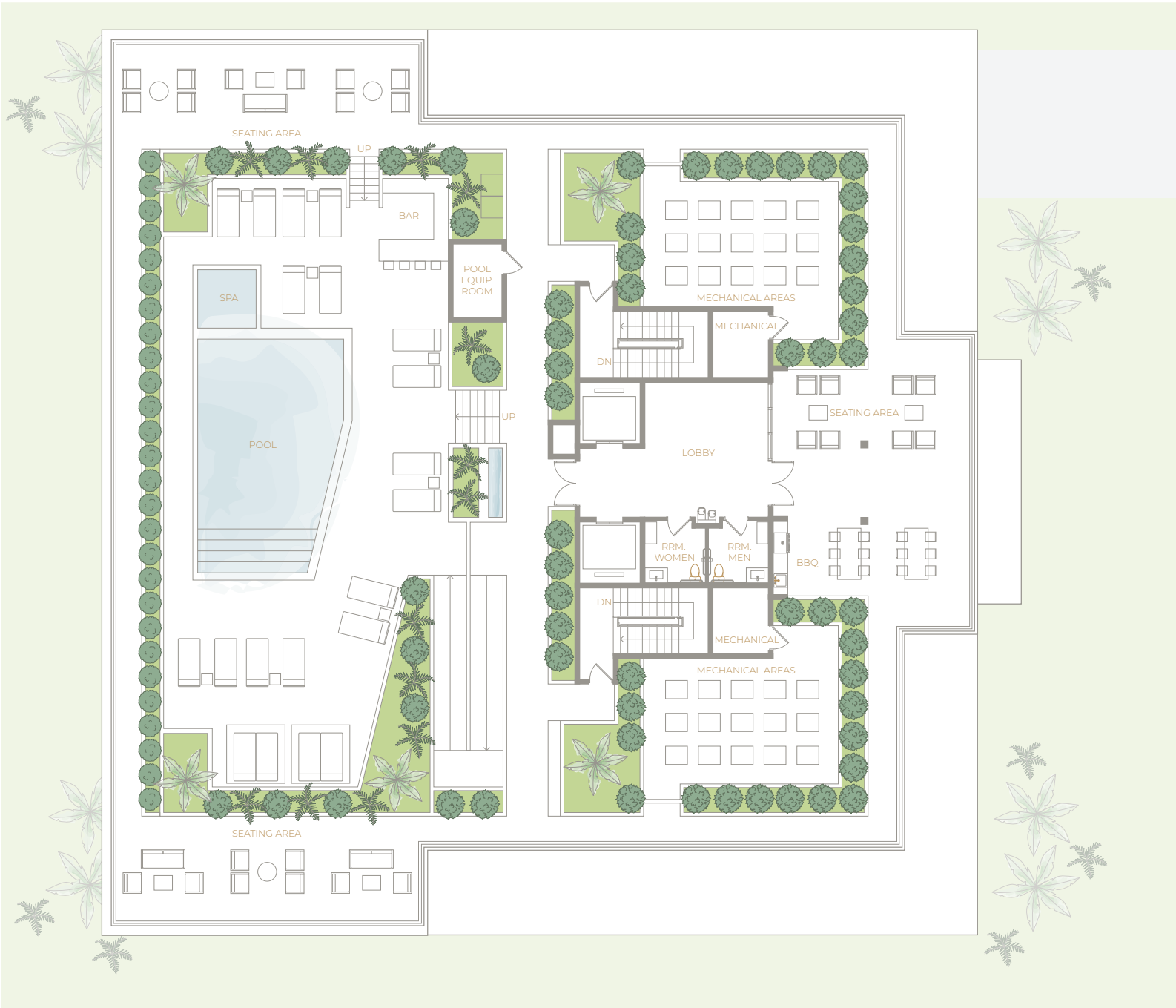
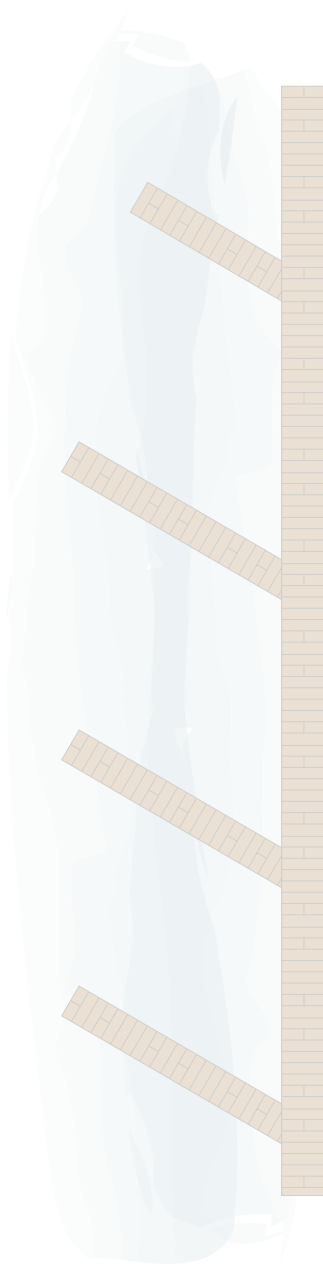


Plans are not to scale. All improvements, facilities, features and amenities (including the dock and boat slips) are proposed only, preliminary and subject to change or elimination. The configuration, use of space or floor plan design are proposed and subject to change. Depictions of furnishings, equipment and landscaping are conceptual and for illustration purposes only. Amenities (including the dock and boat slips) are proposed and subject to change, replacement or elimination. No guarantees or representations are made that any improvement, facilities, features or amenities (including the dock and boat slips) described or depicted will be provided or built, or, if provided or built, will be of the same type or nature described.

ROOF LEVEL



EAST FACADE



Plans are not to scale. All improvements, facilities, features and amenities (including the dock and boat slips) are proposed only, preliminary and subject to change or elimination. The configuration, use of space or floor plan design are proposed and subject to change. Depictions of furnishings, equipment and landscaping are conceptual and for illustration purposes only. Amenities (including the dock and boat slips) are proposed and subject to change, replacement or elimination. No guarantees or representations are made that any improvement, facilities, features or amenities (including the dock and boat slips) described or depicted will be provided or built, or, if provided or built, will be of the same type or nature described.



FOR MORE INFORMATION

SITE ADDRESS 9760 West Bay Harbor Drive, Bay Harbor Islands, FL 33154

VISIT OUR SALES LOUNGE 1170 Kane Concourse, Suite # 101, Bay Harbor Islands, FL 33154
786.850.8998 | ORIGINRESIDENCES.COM | INFO@ORIGINRESIDENCES.COM

ARTEFACTO GALLERY SALES CENTER 17651 Biscayne Blvd, Aventura, FL 33160

🏠 The project is proposed as a condominium intended to be legally named Origin Bay Harbor Islands, a Condominium ("Condominium"). The Condominium and units therein are being developed, offered and sold by Bay Harbour Investment, Inc ("Developer"), and not by Artefacto. Developer uses the Artefacto marks pursuant to a non-exclusive license agreement with Artefacto, which may be terminated according to its terms. Artefacto is not an agent or employee of Developer and is not the developer, sponsor, guarantor, offeror or seller of the Condominium. Artefacto does not guaranty the accuracy of any statements made by Developer herein or the quality, finish or fitment of the development inclusive, without limitation of any unit therein. Unit owners will have no right to use and no interest in any of the Artefacto marks except as may be permitted (if at all) in a license agreement between Artefacto and the Condominium association (if any). No guarantees or representations are given as to the Condominium's continued affiliation with Artefacto or its marks. The decision to enter into a purchase agreement with Developer for the acquisition of a Unit should not be based on the continued relationship, existence or availability of the Artefacto marks or Artefacto (or any benefits from Artefacto), in connection with the Condominium or the units. All improvements, facilities, features, floor plans and amenities (including the dock and boat slips) are proposed only, preliminary and subject to change or elimination without notice. Developer reserves the right to modify, revise, change or withdraw any or all of same in its sole discretion. No guarantees or representations are made that any improvement, facilities, features or amenities (including the dock and boat slips) described or depicted will be provided or built, or, if provided or built, will be of the same type or nature described or depicted. All dimensions, square footages and square meters are approximate and subject to change, and no guarantees or representations are made with respect thereto. These materials are not intended to be an offer to sell, or solicitation of an offer to buy, a unit in the proposed Condominium. Such an offering may only be made pursuant to the prospectus (offering circular) for the proposed Condominium, and no statements should be relied upon unless made in the prospectus provided to you by the Developer or the purchase agreement executed between you and Developer. No real estate broker or salesperson is authorized to make any representations or other statements regarding the proposed Condominium, and no agreements or other arrangements made with, or deposits paid to, any real estate broker or salesperson are or shall be binding on the Developer. These materials do not constitute an offer to sell, or a solicitation of an offer to buy to residents of CT, ID, NJ, NY and OR, or in any other jurisdiction where prior qualification is required unless the Developer has previously met such qualifications or exemptions are available. No marketing or sales literature will be knowingly forwarded to or disseminated in such jurisdictions unless the Developer has met such qualifications. Any offering or programs contained herein are void where prohibited by law.