

## STUDIO

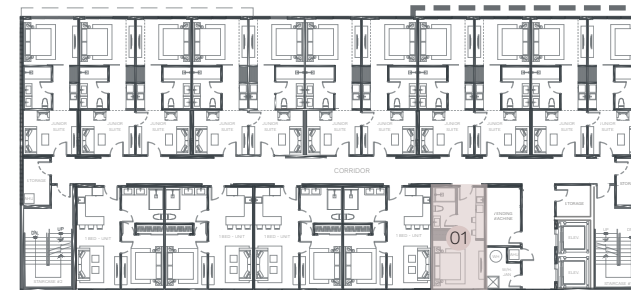
LINE 01 (LEVEL 1-7): 321.3 SQ.FT.

LINE 01 (LEVEL 8): 333 SQ.FT.

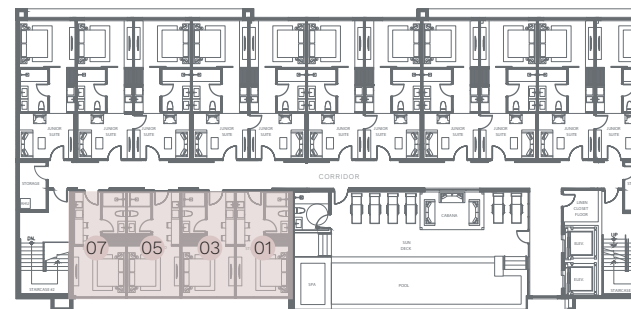
LINES 03 & 05 (LEVEL 8): 321.6 SQ.FT.

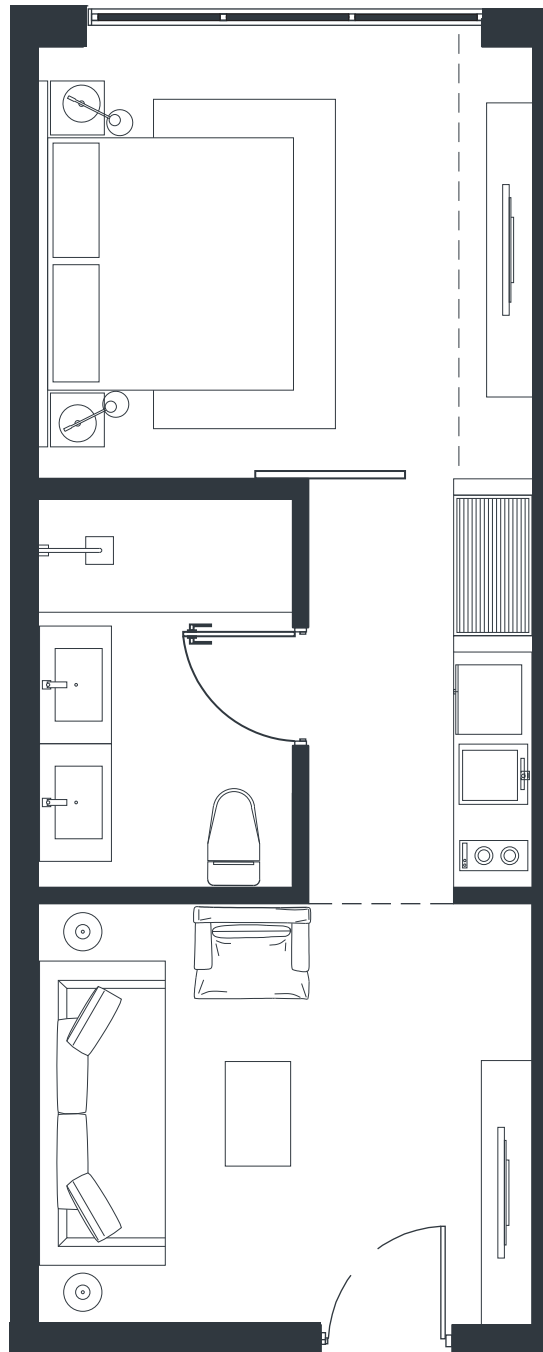
LINE 07 (LEVEL 8): 337.2 SQFT.

LEVEL 2 -7



LEVEL 8





## JUNIOR SUITE (LEVEL 2 - 8)

---

LINE 00: 468.4 SQ.FT.

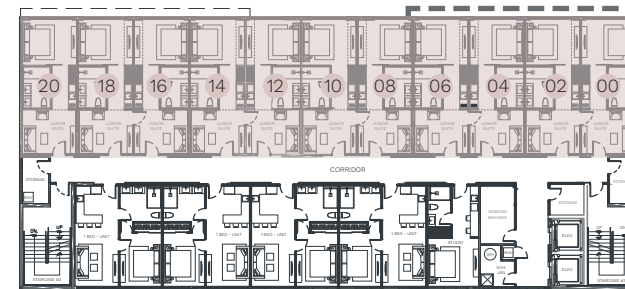
LINE 02: 450.6 SQ.FT.

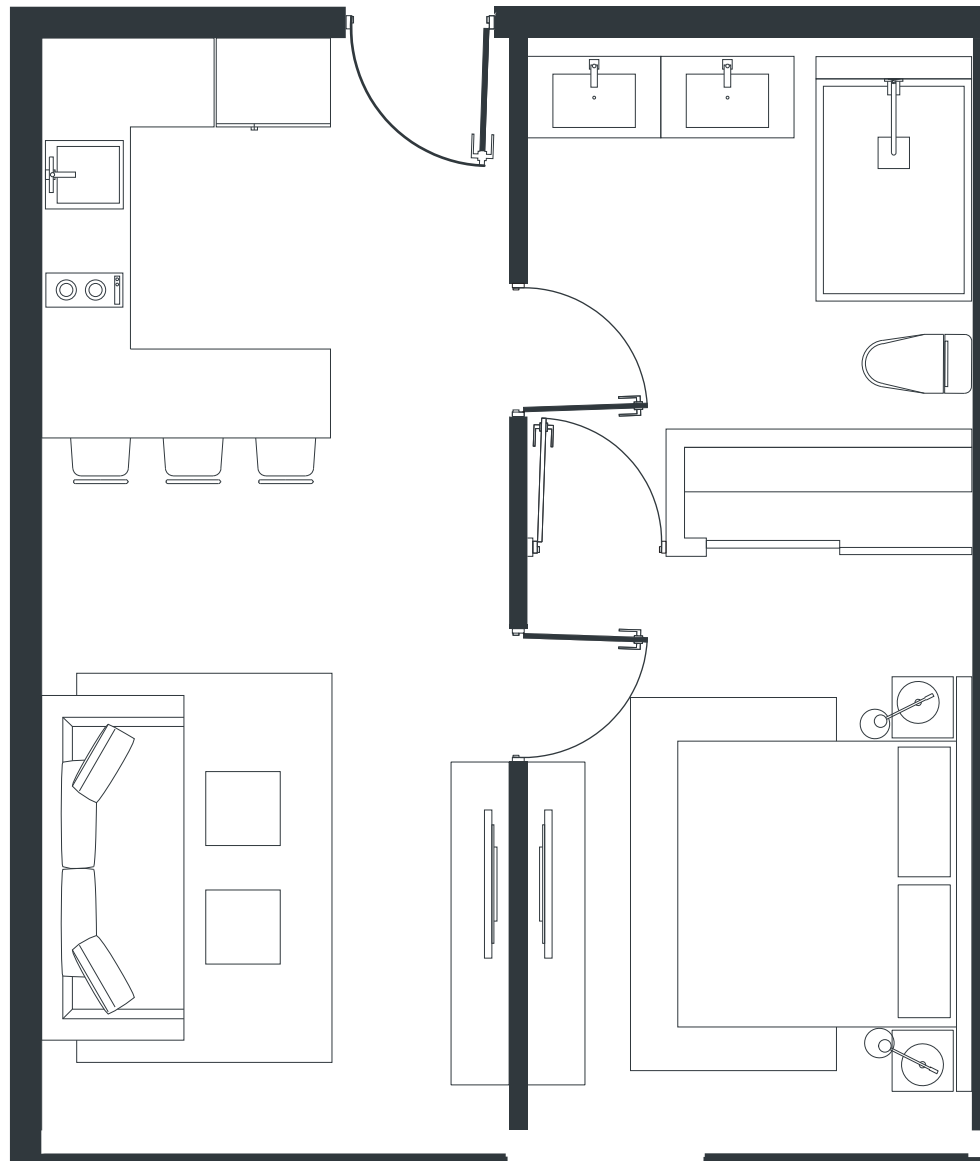
LINES 04: 06, 08, 14: 450.8 SQ.FT.

LINE 10, 16: 450.4 SQ.FT.

LINE 12: 450.5 SQ.FT.

LINE 20: 468 SQ.FT.



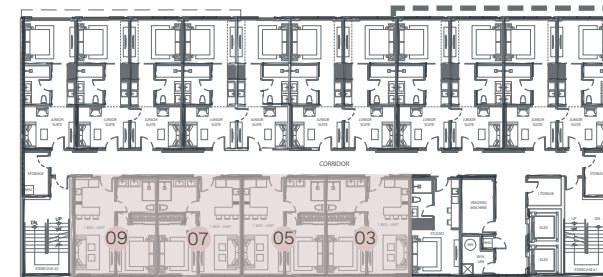


## 1 BED UNIT (LEVEL 2 - 7)

---

LINE 03, 05, 07: 538.5 SQ.FT.

LINE 09: 554.5 SQ.FT.



URBAN NETWORK CAPITAL GROUP

Information contained in this floor plan is believed to be accurate BUT NOT GUARANTEED. Oral representations cannot be relied upon as correctly starting representations of the Developer. For the correct representations, make reference to the purchase agreement and to the documents required by 718.503, Florida Statutes, to be furnished by a Developer to a buyer or lessee. The sketches, renderings, floor plans, graphic materials, feature plans, condos for sale, and specifications described herein are proposed only, and the Developer reserves the right to modify, revise, or withdraw any or all of the same in its sole description and without prior notice.